



ORIGINAL ARTICLE

Resistance training improves cardiovascular autonomic control and biochemical profile of rats exposed to a Western diet in the perinatal period[☆]



Michael Nadson Santos Santana, Vitor Ulisses De Melo, Fabricio Nunes Macedo, André Sales Barreto, Robervan Vidal-Santos, Matiotti Neto, Marcio Roberto Viana dos Santos, Valter Joviniano Santana-Filho*

Departamento de Fisiologia, Universidade Federal de Sergipe, São Cristóvão, SE, Brazil

Received 14 February 2018; accepted 24 August 2018

Available online 27 June 2019

KEYWORDS

Resistance training;
Autonomic nervous system;
Western diet

Abstract

Introduction and Objectives: Consumption of a Western diet during the perinatal period is associated with development of cardiovascular disease. Resistance training (RT) has been used to treat cardiovascular disorders. The aim of this work was to assess the effect of RT on cardiometabolic disorders in rats exposed to a Western diet in the perinatal period.

Methods: Female Wistar rats were fed with control or Western diet during pregnancy and lactation. The pups were divided into three groups: Control (C), Western Diet Sedentary (WDS) and Western Diet+RT (WDRT). At 60 days of age, all animals started the RT protocol (five times a week for four weeks). At the end, blood pressure was recorded for analysis of heart rate variability and baroreflex sensitivity (BRS). Blood samples were collected for biochemical analysis.

Results: RT reduced blood pressure and vascular sympathetic modulation and increased BRS. There were improvements in biochemical profile, with reductions in fasting blood glucose, total cholesterol and low-density lipoprotein, and an increase in high-density lipoprotein.

Conclusion: RT led to beneficial adaptations in the cardiovascular system, mediated by changes in the mechanisms of autonomic control and biochemical profile of animals exposed to a Western diet in the perinatal period.

© 2019 Sociedade Portuguesa de Cardiologia. Published by Elsevier España, S.L.U. This is an open access article under the CC BY-NC-ND license (<http://creativecommons.org/licenses/by-nc-nd/4.0/>).

[☆] Please cite this article as: Santana MNS, De Melo VU, Macedo FN, et al. Treinamento resistido melhora controle autonômico cardiovascular e perfil bioquímico de ratos expostos a dieta ocidental no período perinatal. Rev Port Cardiol. 2019;38:337–345.

* Corresponding author.

E-mail address: vjsf@infonet.com.br (V.J. Santana-Filho).

PALAVRAS-CHAVE

Treinamento de resistência;
Sistema nervoso autônomo;
Dieta ocidental

Treinamento resistido melhora controle autonômico cardiovascular e perfil bioquímico de ratos expostos a dieta ocidental no período perinatal

Resumo

Introdução e objetivos: O consumo da dieta ocidental está associado ao surgimento de doenças cardiovasculares. O treinamento de resistência (TR) tem sido utilizado no tratamento destas doenças. O objetivo deste trabalho foi avaliar o efeito do TR sobre as alterações cardiometabólicas na prole de ratas expostas a dieta ocidental no período perinatal.

Métodos: Ratas *Wistar* receberam dieta controle ou ocidental durante a gravidez e lactação. Os filhotes foram divididos em três grupos: Controle (C), dieta ocidental sedentário (OCS) e dieta ocidental+TR (OCTR). Aos 60 dias de vida, os animais iniciaram o protocolo de TR realizado cinco vezes por semana durante quatro semanas. Ao fim, foi registrada pressão arterial para análise da variabilidade da frequência cardíaca e sensibilidade do barorreflexo (SBR). Amostras de sangue foram coletadas para análise bioquímica.

Resultados: O TR foi capaz de reduzir a pressão arterial, a modulação simpática vascular e aumentar a SBR. Houve melhoria no perfil bioquímico, com redução na glicemia de jejum, colesterol total e lipoproteínas de baixa densidade, além de aumento das lipoproteínas de alta densidade.

Conclusão: O TR promoveu adaptações benéficas ao sistema cardiovascular, mediadas por ajustes nos mecanismos de controle autonômico e perfil bioquímico dos animais expostos à dieta ocidental no período perinatal.

© 2019 Sociedade Portuguesa de Cardiologia. Publicado por Elsevier España, S.L.U. Este é um artigo Open Access sob uma licença CC BY-NC-ND (<http://creativecommons.org/licenses/by-nc-nd/4.0/>).

List of abbreviations

1RM	one-repetition maximum test
ACSM	American College of Sports Medicine
BP	blood pressure
BRS	baroreflex sensitivity
DBP	diastolic blood pressure
GLUT4	glucose transporter 4
HBS	Household Budget Survey
HDL	high-density lipoprotein
HF	high frequency component
HR	heart rate
LDL	low-density lipoprotein
LF	low frequency component
MAP	mean arterial pressure
NST	nucleus of the solitary tract
PI	pulse interval
PVN	paraventricular nucleus of the hypothalamus
RT	resistance training
SBP	systolic blood pressure
TC	total cholesterol
TG	triglycerides
VLDL	very low-density lipoprotein
VLF	very low frequency component
WDRT	Western diet trained
WDS	Western diet sedentary

Introduction

Eating patterns in the modern world are changing, with increasing consumption of low-cost, high-calorie, processed foods high in sodium and saturated fat and low in other essential nutrients. This is known as the Western diet.^{1,2} At the same time, technological advances and modern lifestyles have reduced the need for people to move, resulting in increased sedentarism. These factors are leading to increases in overweight and obesity.³

Studies show that excessive consumption of nutrients in early life (intrauterine and/or pre- and post-natal stages) leads to morphological and functional changes in the fetus and to the development of cardiovascular disease in adulthood, in both animals⁴ and humans,⁵ a phenomenon known as fetal or metabolic programming.^{6,7}

This process can alter phenotypic characteristics, leading to dysregulation of energy balances and to gains in body weight, predisposing the individual to obesity and associated comorbidities.^{8,9} In a previous study, we showed that animals fed a Western diet in the perinatal period had altered biochemical profiles and cardiovascular dysautonomia, followed by hypertension in adulthood.⁹

Resistance training (RT) is used as a way to improve physical and muscular fitness, increase lean mass and maintain basal metabolic rate. RT has also been shown to foster beneficial adaptations in cardiovascular function.^{10,11}

We therefore hypothesized that the cardiovascular benefits of RT are brought about by adaptations in blood pressure (BP) control mechanisms and that it will improve the biochemical profile of rats exposed to a Western diet in the perinatal period. Accordingly, the study aimed to observe the effects of RT on cardiovascular and biochemical variables in these animals.

Methods

Animals

The present study meets the standards for conducting research on animals and its procedures followed the ethical principles of animal experimentation laid down by the Brazilian National Council for the Control of Animal Experimentation (CONCEA), based on the 2013 Brazilian guidelines for the care and use of animals for scientific and teaching purposes (DBCA). It was approved by the Committee on Animal Research and Ethics of the Federal University of Sergipe (CEPA/UFS), protocol 10/2014.

Wistar rats of both sexes were kept in polypropylene cages with water and chow ad libitum at a temperature of 22 ± 1 °C. Fifteen virgin female Wistar rats, aged between 90 and 120 days and weighing 250–300 g, were mated with fertile males in the proportion of four females to one male. A vaginal swab was used daily to check for pregnancy from the presence of sperm. The female rats were then divided into two groups according to diet: Control (n=5) and Western (n=5), until weaning. The litters were each adjusted to eight neonates 24 hours after birth, maintaining the same proportion of males and females when possible. Only males were used in the experimental protocols, to prevent the hormonal fluctuations due to the estrous cycle from influencing the results.

After weaning, the pups were divided into three groups: Control (C, n=7), pups of mothers fed a control diet that did not perform RT; Western diet sedentary (WDS, n=7), pups of mothers fed with a Western diet that did not perform RT; and Western diet trained (WDRT, n=7), pups of mothers fed with a Western diet that performed RT.

After weaning, the animals were fed with Labina[®] commercial chow for rodents. According to the manufacturer (Purina do Brasil Ltda), the chow contains minimum 23% crude protein, minimum 4% volatile substances, maximum 10% ash and 5% fiber, and has an energy content of 3.6 kcal/g.

Diets

The control diet used during gestation and lactation was casein-based AIN-93G, specifically for growing rodents.¹² The formulation of the experimental Western diet was based on the Brazilian Household Budget Survey (HBS), with some adjustments to the percentages of its composition. These included increased lipid and simple carbohydrate content in order to enhance organoleptic factors, to give the feed a similarly pleasant odor and texture to the Western diet. The protein content was also adjusted, since the proportion of protein in the HBS diet is inadequate for the reproduction

and growth stages in rats, and a final adjustment was made for the adult rats' maintenance stage (15.5% protein).

The Western diet contained 31% lipids, mainly saturated fats (67.59%), and 51.7% carbohydrates, mainly in the form of simple sugars, which resembles Western diets in humans, while the control diet contained 25.99% saturated fats and 55% carbohydrates.

The Control (AIN-93G) and Western diets were produced by the Laboratory of Experimental Nutrition and Diet (LNED) of the Department of Nutrition of the Federal University of Pernambuco and were stored at 4 °C until used (Figure 2).

Resistance training protocol

RT was performed using a squat-training apparatus.¹³ The animals underwent a five-day adaptation period before training by being handled and placed in the device in the starting position of the exercise, with no added load.

After adaptation, all the animals underwent a one-repetition maximum test (1RM) to determine the loads to be used. In the 1RM, the animal fully extends its hind legs under the maximum possible load while completing the movement. The desired intensity can thus be calculated based on the loads raised in the test. The RT protocol started after 48 hours, and consisted of three series of 10 repetitions with an intensity of 40% of 1RM (defined as low intensity),¹⁴ with 1-min intervals between the series for recovery. Each RT session lasted approximately 5 min. RT was performed five times a week for four weeks, for a total of 20 RT sessions. A new 1RM was carried out every 15 days to adjust the loads.

The animals were stimulated to perform the exercise by electrodes placed on the tail (BIOSET, Physiotonus four, Model 3050, Rio Claro, São Paulo). The parameters used were frequency 1 Hz, pulse width 1 ms, on time 1–3 s, off time 2 s, and sufficient intensity for the animals to perform the exercise (4–15 mA). The animals in groups C and WDS were placed in the squat-training apparatus and electrostimulated with the same parameters as for those in the WDRT group, but the equipment was kept in the rest position and without added load.

Experimental design

Assessment of cardiovascular function

The animals were anesthetized with intraperitoneal (IP) sodium thiopental (50 mg/kg) and a polyethylene catheter (PE-10/PE-50, Intramedic, Becton Dickinson, Sparks, MD, USA) was surgically implanted in the left femoral artery. The catheter was exteriorized subcutaneously in the posterior cervical region. After surgery, the animals received 1.1 mg/kg IP of flunixin meglumine (Banamine[®], Schering-Plough, Kenilworth, NJ, USA) to reduce hyperalgesia and postoperative inflammation, for the animals' well-being.

Twenty-four hours after the procedure and after recovery from the effects of the anesthesia, the catheter was connected to a pressure transducer coupled to a pre-amplifier (FE221, Bridge Amp, ADInstruments, Bella Vista, NSW, Australia) using the PowerLab recording system (ADInstruments, Bella Vista, NSW, Australia). BP was recorded for 30 min and processed using LabChart 7 software (ADInstruments, Bella Vista, NSW, Australia), in order to identify inflection points

Table 1 Changes in weight, absolute one-repetition maximum and one-repetition maximum/body mass of animals after the resistance training protocol.

	Period	C (n=7)	WDS (n=7)	WDRT (n=7)
Body mass, g	Initial	266.3 ± 2.4	280.3 ± 6.8	277.3 ± 4.0
	Final	300 ± 3.5	308.4 ± 5.4	309.1 ± 3.7
1RM, g	Initial	1340 ± 58.1	1420 ± 81.3	1480 ± 55.3
	Final	1560 ± 54.1	1710 ± 83.5	1770 ± 57.8
1RM/body mass	Initial	4.98 ± 0.2	5.0 ± 0.4	5.3 ± 0.2
	Final	5.11 ± 0.18	5.59 ± 0.36	5.81 ± 0.25

1RM: one-repetition maximum; C: control group; WDRT: Western diet trained group; WDS: Western diet sedentary group.

and to generate beat-by-beat time series. All readings were taken in the morning, in order to ensure that behavioral factors would influence all the animals equally. Mean arterial pressure (MAP), systolic BP (SBP), diastolic BP (DBP), pulse interval (PI) and heart rate (HR) were measured and analyzed.

Autonomic assessment

Variability in PI and SBP was analyzed using CardioSeries software, version 2.4 (<http://sites.google.com/site/cardioseries>), as described previously.¹⁵ Beat-by-beat series were obtained based on the BP recordings and converted into 100-ms points (10 Hz) by cubic spline interpolation. The data were divided into partially overlapping sequences and periods of 512 points (51.2 s). For calculation of spectral power, the data were inspected visually and non-stationary segments were discarded.

The spectrum was calculated directly by fast Fourier transform and a Hanning window was used to attenuate distortion. The spectrum was divided into low frequency (LF) (0.2-0.75 Hz) and high frequency (HF) (0.75-3 Hz) bands. The results were expressed in normalized units by dividing the LF and HF powers by the total power minus very low frequency (VLF) (<0.2 Hz) power. The LF component of PI represents cardiac sympathetic modulation, the HF component of PI is an index of vagal modulation, while the LF/HF ratio measures cardiac autonomic balance. The LF component of SBP represents vascular sympathetic modulation.

Spontaneous baroreflex sensitivity (BRS) was quantified by the sequence method. The CardioSeries software was used to process beat-by-beat time series for SBP and PI, searching for sequences of at least four consecutive beats in which increases in SBP were followed by lengthening of PI and decreases in SBP were followed by shortening of PI. Data with a linear correlation of >0.85 were considered to be baroreflex sequences. The slope of the linear regression lines between SBP and PI was used as an index of BRS.¹⁵

Biochemical assessment

The animals were anesthetized with halothane after 12 hours fasting, and blood was collected from the retro-orbital plexus using heparinized capillary tubes. The sample was placed in a separation tube and centrifuged at 3500 rpm for 5 min to obtain plasma. The supernatant was drawn off using a pipette and transferred to an Eppendorf® tube, which was sent for biochemical analysis of glucose, total cholesterol (TC), triglycerides (TG),

high-density lipoprotein (HDL) and low-density lipoprotein (LDL).

A colorimetric enzyme assay (Bioclin, Belo Horizonte, Minas Gerais, Brazil) was used to measure plasma concentrations of the biochemical parameters, which were analyzed in an 800 XI spectrophotometer (Femto, São Paulo, Brazil), in accordance with the manufacturer's instructions. The Friedewald formula was used to measure LDL and very low density lipoprotein (VLDL).¹⁶

Statistical analysis

Values were reported as mean ± standard error of the mean. The results for hemodynamic assessment, autonomic modulation and biochemical profile were analyzed using one-way analysis of variance followed by the Bonferroni post hoc test to assess differences between means in the two groups. Values of $p < 0.05$ were considered statistically significant. GraphPad software version 5.0 (San Diego, CA, USA) was used for the statistical analysis.

Results

Changes in body weight and one-repetition maximum test results

After four weeks of RT, no significant difference was observed in the pups' body mass (Table 1). Although the groups fed the Western diet had greater body mass before training, there was also no significant difference in the strength of the animals in the WDRT group compared to those in groups C and WDS.

Hemodynamic assessment

Hemodynamic variables are presented in Table 2. The WDS group had higher BP at rest than groups C and WDRT, while the WDRT group had lower MAP, SBP and DBP than the WDS group. There were no differences in HR between the groups.

Cardiovascular autonomic modulation

The results for autonomic modulation are shown in Figure 1. The WDS group presented an increase in the LF component (Figure 1a) and a reduction in HF (Figure 1b). RT attenuated

Table 2 Hemodynamic variables recorded 24 hours after the resistance training protocol.

	C (n=7)	WDS (n=7)	WDRT (n=7)
HR, bpm	383.7 ± 12.3	367.2 ± 13.1	354.0 ± 7.4
DBP, mmHg	82.8 ± 2.7	99 ± 3.0 ^b	89.1 ± 2.8 ^a
MAP, mmHg	103.2 ± 3.8	121.1 ± 2.6 ^b	108.2 ± 3.7
SBP, mmHg	134.2 ± 5.8	151.5 ± 3.4 ^b	135.2 ± 3.1 ^a

One-way analysis of variance was used followed by the Bonferroni post hoc test.

C: control group; DBP: diastolic blood pressure; HR: heart rate; MAP: mean arterial pressure; SBP: systolic blood pressure; WDRT: Western diet trained group; WDS: Western diet sedentary group.

^a p<0.05 for WDRT vs. WDS.

^b p<0.05 for WDS vs. C.

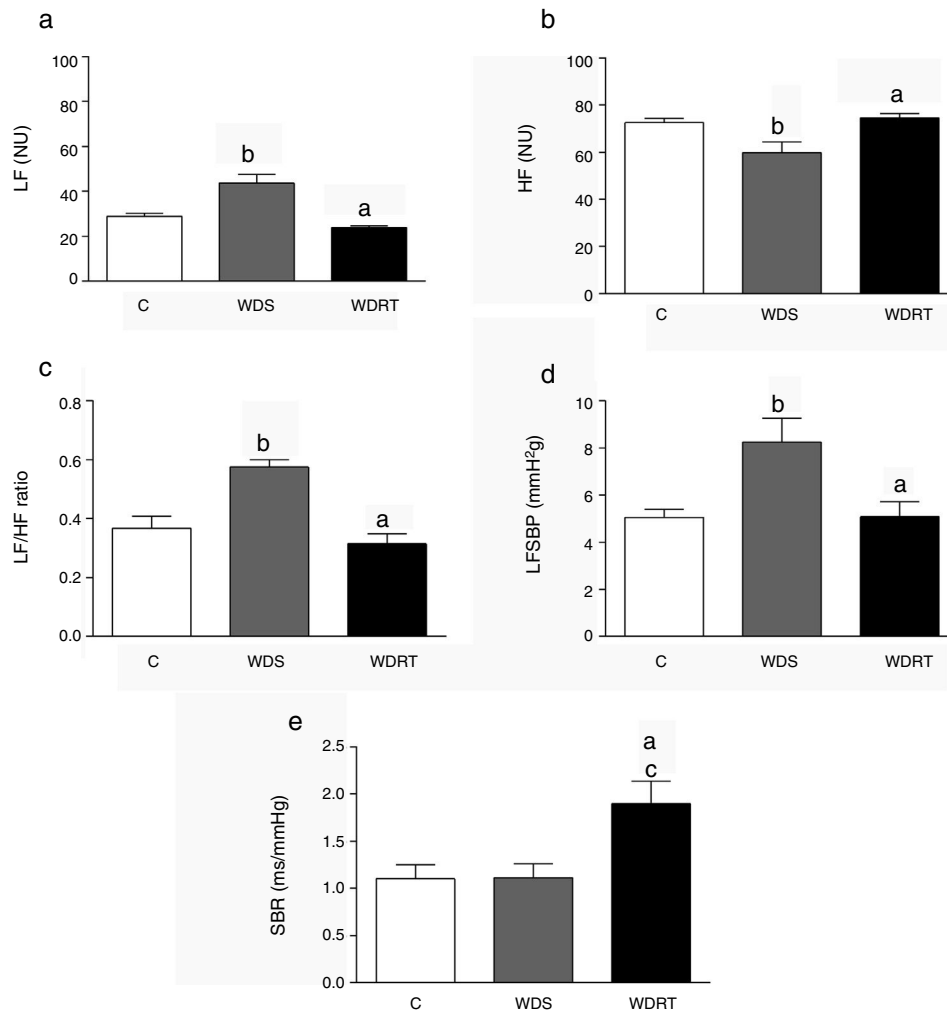


Figure 1 Cardiovascular autonomic modulation and spontaneous baroreflex sensitivity after four weeks of resistance training. BRS: baroreflex sensitivity; C: control group; HF: high frequency; LF: low frequency; LFSBP: low frequency component of systolic blood pressure; NU: normalized units; WDRT: Western diet trained group; WDS: Western diet sedentary group. ^ap<0.05 for WDRT vs. WDS; ^bp<0.05 for WDS vs. C; ^cp<0.05 for WDRT vs. C. One-way analysis of variance was used followed by the Bonferroni post hoc test.

this alteration, producing a reduction in LF and an increase in HF (Figure 1c).

In addition, the high LF component of SBP had high values in the WDS group, while for WDRT animals this variable was

low (Figure 1d). Although BRS was unchanged as a result of the Western diet, there was an increase in BRS in animals in the WDRT group (Figure 1e) compared to the WDS group.

Table 3 Biochemical variables assessed in blood samples collected 24 hours after the resistance training protocol.

	C (n=7)	WDS (n=7)	WDRT (n=7)
TC	70.8 ± 1.1	85.6 ± 3.4 ^b	67.0 ± 3.8 ^a
Glucose	126.2 ± 3.5	153.8 ± 6.3 ^b	116.2 ± 4.6 ^a
HDL	48.5 ± 0.7	41.8 ± 2.8	57.2 ± 3.5 ^{a,c}
LDL	13.1 ± 0.6	31.0 ± 3.2 ^b	14.2 ± 2.2
TG	47.4 ± 2.7	54.0 ± 2.2	53.2 ± 4.8 ^c
VLDL	9.1 ± 0.4	11.0 ± 0.5	10.4 ± 0.8 ^a

One-way analysis of variance was used followed by the Bonferroni post hoc test.

C: control group; HDL: high-density lipoprotein; LDL: low-density lipoprotein; TC: total cholesterol; TG: triglycerides; VLDL: very low-density lipoprotein; WDRT: Western diet trained group; WDS: Western diet sedentary group.

^a p<0.05 for WDRT vs. WDS.

^c p<0.05 for WDRT vs. C.

^b p<0.05 for WDS vs. C.

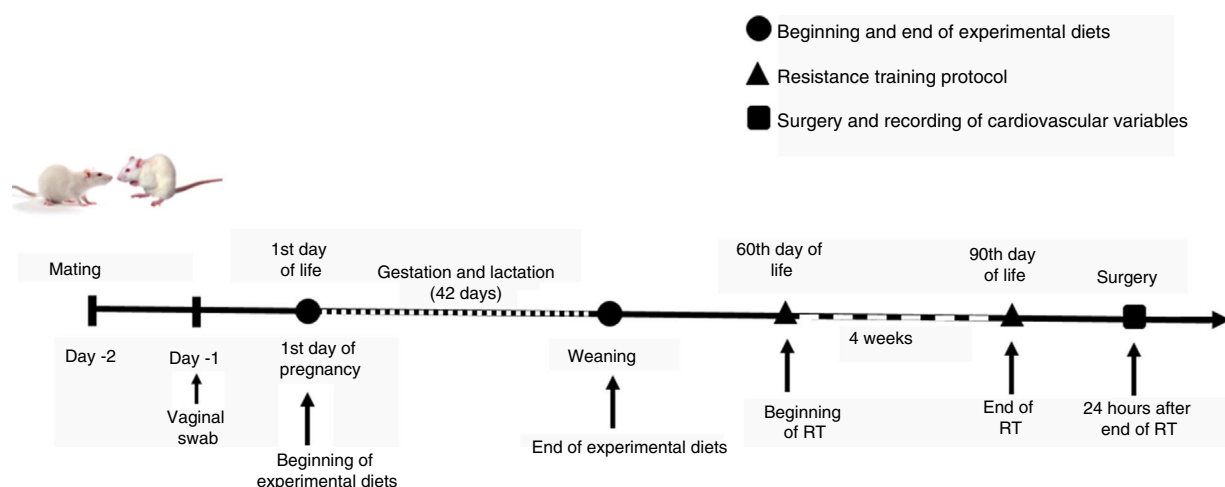


Figure 2 Experimental design: mating, beginning of experimental diets, resistance training (RT) protocol and recording of cardiovascular variables.

Biochemical variables

The results for the biochemical variables of fasting blood glucose, TC, HDL, LDL, VLDL and TG can be observed in [Table 3](#). The WDS group had higher fasting blood glucose, TC and LDL than group C, whereas the WDRT group had lower blood glucose, TC and LDL and higher HDL.

Discussion

The results of the present study show that a Western diet fed to Wistar rats during the perinatal period had important physiological effects, including increased serum glucose, TC, and LDL and reduced HDL. The Western diet also led to dysautonomia, promoting cardiovascular sympathetic modulation and hypertension in adulthood. These findings corroborate previous results from our laboratory using the same experimental protocol and diet.⁹

Low-intensity RT (40% of 1RM) does not lead to alterations in body mass or strength gain, although individuals on fitness programs show changes in body composition.^{17,18} The

American College of Sports Medicine (ACSM)¹⁴ recommend, in RT programs aimed at increasing muscle strength, loads corresponding to 60-70% of 1RM for novice to intermediate individuals and 80-100% of 1RM for advanced individuals. Programs designed for increasing muscular hypertrophy should use loads of 70-85% of 1RM for novice and intermediate individuals and 70-100% for advanced training. Baraúna et al. observed increased muscle strength in mice trained on apparatus similar to that used in our study, although using workloads of 75% of 1RM, supporting the ACSM's recommendations.¹⁴ Our results show that the intensity and duration of RT used in the present study did not lead to modifications in body mass or strength in these animals.

To our knowledge, this is the first study to show that low-intensity RT reduces sympathetic modulation, increases BRS and improves the lipid and glycemic profiles of animals exposed to a Western diet in the perinatal period, which did not develop the hypertension observed in sedentary animals on the same diet. Animals exposed to a Western diet and to RT presented lower BP and improvements in most biochemical variables. RT improved BRS, without increasing

the LF component but increasing the HF component of PI. The mechanisms behind this effect may be associated with adjustments in central BP control mechanisms.

Physical exercise has been associated with various cardiovascular adaptations, including reduced vascular resistance,^{19,20} cardiac remodeling, lower blood pressure, reduced HR²¹ and increased expression of endothelium-derived relaxing factors.²²

It has been shown that aerobic exercise induces neural changes in autonomic nuclei, increasing noradrenergic signaling from the nucleus of the solitary tract (NST) to pre-autonomic neurons in the paraventricular nucleus (PVN) of the hypothalamus, increasing the intrinsic excitability of neurons in the PVN-NST pathway, and increasing vagal tone through the release of acetylcholine by the vagus nerve.^{23,24} The same training model leads to an increase in mRNA of the oxytocin receptor in the medulla and greater expression of this neurotransmitter in the PVN,^{23,25,26} which correlates with improvement in baroreflex control.^{24,27} These adjustments may help to reduce sympathetic tone in hypertensive subjects.²³

We observed that RT also led to beneficial adaptations in the cardiovascular system, including lower BP, increased BRS and improvement in sympathovagal balance, corroborating previous findings by our group,¹⁰ although the mechanisms involved in these responses remain to be elucidated.

Sedentary animals that consumed a Western diet at the start of life presented increased vascular sympathetic modulation, as observed in a previous study carried out in our laboratory,⁹ while this variable decreased in the group that performed RT. The consumption of high-calorie and high-fat diets is directly related to increases in adipose tissue and obesity, which leads to sympathetic hyperactivity, promoting peripheral vasoconstriction and hypertension.²⁸ There is evidence that reduced sympathetic action in blood vessels helps to decrease BP, mediated by changes in vascular stiffness.²⁹

Previous studies carried out in our laboratory using the same exercise model showed that RT enhances acetylcholine- and insulin-induced vasodilation, increases the bioavailability of nitric oxide, and improves sympathovagal balance and vasodilation capacity. Collectively, these factors help reduce BP.^{10,30–32}

The nutritional insult induced in the animals at the start of life caused metabolic disorders, with increases in TC, LDL and blood glucose, as previously observed.^{9,33} In models of obesity, insulin resistance is associated with reduced expression of glucose transporter 4 (GLUT4) and impairment of the insulin signaling pathway.³⁴ RT increases the expression of GLUT4, improving insulin response in skeletal muscle and adipose tissue.^{32,35,36} The reduction in blood glucose observed in this study probably results from improved glucose transportation through GLUT4 translocation.

The trained rats exposed to a Western diet had lower LDL, corroborating studies in which RT reduced this variable in different populations.^{37,38} Higher serum lipid concentrations increase arterial fat deposits and impair vascular elasticity caused by LDL deposition, which may evolve to atherosclerosis.³⁹

No change was noted in HDL as a result of the consumption of the Western diet. However, the trained animals showed an increase in HDL, which helps to protect the vascular bed. This shows that RT can have an antiatherogenic role.

Conclusions

To summarize, our results showed that a Western diet at the perinatal stage leads to dysautonomia and metabolic disorders, resulting in hypertension in adulthood, while an RT protocol reduced BP through positive adjustments in autonomic control mechanisms and improved BRS. Furthermore, RT reduced blood glucose and TC and improved the HDL/LDL ratio.

Understanding the mechanisms by which RT improves autonomic control and biochemical profiles in experimental animals offers new possibilities for the prevention and treatment of cardiometabolic disorders caused by inappropriate diet. Further studies should be conducted to elucidate the molecular and epigenetic mechanisms involved in the genesis of metabolic disorders and to understand how exercise can influence central control mechanisms, going beyond endothelial mechanisms based on the release of vasoactive substances.

Conflicts of interest

The authors have no conflicts of interest to declare.

Acknowledgments

We thank the Coordination for the Improvement of Higher Education Personnel (CAPES) and the Foundation for Scientific and Technological Research of Sergipe (FAPITEC).

References

1. Popkin BM, Siega-Riz AM, Haines PS, et al. Where's the fat? Trends in U.S. Diets 1965–1996. *Prev Med.* 2001;32:245–54.
2. Batista Filho M, Rissin A. Nutritional transition in Brazil: geographic and temporal trends. *Cad Saúde Pública.* 2003;19:S181–91.
3. Ochoa MC, Moreno-Aliaga MJ, Martínez-González MA, et al. TV watching modifies obesity risk linked to the 27Glu polymorphism of the ADRB2 gene in girls. *Int J Pediatr Obes.* 2006;1:83–8.

4. Sawaya AL. Malnutrition: long-term consequences and nutritional recovery effects. *Estud Av.* 2006;20:147–58.
5. Gademan MGJ, Eijdsden M van, Roseboom TJ, et al. Maternal prepregnancy body mass index and their children's blood pressure and resting cardiac autonomic balance at age 5 to 6 years. *Hypertension.* 2013;62:641–7.
6. Barker DJP. The origins of the developmental origins theory. *J Intern Med.* 2007;261:412–7.
7. Gluckman PD, Hanson MA. Developmental and epigenetic pathways to obesity: an evolutionary-developmental perspective. *Int J Obes.* 2008;32:S62–71.
8. Sullivan EL, Smith MS, Grove KL. Perinatal exposure to high-fat diet programs energy balance, metabolism and behavior in adulthood. *Neuroendocrinology.* 2011;93:1–8.
9. Vidal-Santos R, Macedo FN, Santana MNS, et al. Western diet in the perinatal period promotes dysautonomia in the offspring of adult rats. *J Dev Orig Health Dis.* 2017;8:216–25.
10. Macedo FN, Mesquita TRR, Melo VU, et al. Increased nitric oxide bioavailability and decreased sympathetic modulation are involved in vascular adjustments induced by low-intensity resistance training. *Front Physiol.* 2016;7, <http://dx.doi.org/10.3389/fphys.2016.00265>.
11. Mota MM, da Silva TLTB, Fontes MT, et al. Resistance exercise restores endothelial function and reduces blood pressure in type 1 diabetic rats. *Arq Bras Cardiol.* 2014;103:25–32.
12. Reeves PG, Nielsen FH, Fahey GC. AIN-93 purified diets for laboratory rodents: final report of the American Institute of Nutrition ad hoc writing committee on the reformulation of the AIN-76A rodent diet. *J Nutr.* 1993;123:1939–51.
13. Tamaki T, Uchiyama S, Nakano S. A weight-lifting exercise model for inducing hypertrophy in the hindlimb muscles of rats. *Med Sci Sports Exerc.* 1992;24:881–6.
14. American College of Sports Medicine. American College of Sports Medicine position stand. Progression models in resistance training for healthy adults. *Med Sci Sports Exerc.* 2009;41:687–708.
15. De Melo VU, Saldanha RRM, Dos Santos CR, et al. Ovarian hormone deprivation reduces oxytocin expression in paraventricular nucleus preautonomic neurons and correlates with baroreflex impairment in rats. *Front Physiol.* 2016;7.
16. Friedewald WT, Levy RI, Fredrickson DS. Estimation of the concentration of low-density lipoprotein cholesterol in plasma, without use of the preparative ultracentrifuge. *Clin Chem.* 1972;18:499–502.
17. Prabhakaran B, Dowling EA, Branch JD, et al. Effect of 14 weeks of resistance training on lipid profile and body fat percentage in premenopausal women. *Br J Sports Med.* 1999;33:190–5.
18. Polito MD, Cyrino ES, Gerage AM, et al. Efeito de 12 semanas de treinamento com pesos sobre a força muscular, composição corporal e triglicérides em homens sedentários. *Rev Bras Med Esporte.* 2010;16:29–32.
19. Nelson L, Jennings GL, Esler MD, et al. Effect of changing levels of physical activity on blood-pressure and haemodynamics in essential hypertension. *Lancet Lond Engl.* 1986;2:473–6.
20. Amaral SL, Zorn TMT, Michelini LC. Exercise training normalizes wall-to-lumen ratio of the gracilis muscle arterioles and reduces pressure in spontaneously hypertensive rats. *J Hypertens.* 2000;18:1563–72.
21. Véras-Silva AS, Mattos KC, Gava NS, et al. Low-intensity exercise training decreases cardiac output and hypertension in spontaneously hypertensive rats. *Am J Physiol – Heart Circ Physiol.* 1997;273:H2627–31.
22. Higashi Y, Yoshizumi M. Exercise and endothelial function: role of endothelium-derived nitric oxide and oxidative stress in healthy subjects and hypertensive patients. *Pharmacol Ther.* 2004;102:87–96.
23. Higa-Taniguchi KT, Silva FCP, Silva HMV, et al. Exercise training-induced remodeling of paraventricular nucleus (nor)adrenergic innervation in normotensive and hypertensive rats. *Am J Physiol – Regul Integr Comp Physiol.* 2007;292:R1717–27.
24. Michelini LC. The NTS and integration of cardiovascular control during exercise in normotensive and hypertensive individuals. *Curr Hypertens Rep.* 2007;9:214–21.
25. Jackson K, Silva HMV, Zhang W, et al. Exercise training differentially affects intrinsic excitability of autonomic and neuroendocrine neurons in the hypothalamic paraventricular nucleus. *J Neurophysiol.* 2005;94:3211–20.
26. Martins AS, Crescenzi A, Stern JE, et al. Hypertension and exercise training differentially affect oxytocin and oxytocin receptor expression in the brain. *Hypertension.* 2005;46:1004–9.
27. Higa KT, Mori E, Viana FF, et al. Baroreflex control of heart rate by oxytocin in the solitary-vagal complex. *Am J Physiol – Regul Integr Comp Physiol.* 2002;282:R537–45.
28. Rahmouni K, Correia MLG, Haynes WG, et al. Obesity-associated hypertension. *Hypertension.* 2005;45:9–14.
29. Parati G, Bilo G. Arterial baroreflex modulation of sympathetic activity and arterial wall properties. *Hypertension.* 2012;59:5–7.
30. Mota MR, Oliveira RJ de, Dutra MT, et al. Acute and chronic effects of resistive exercise on blood pressure in hypertensive elderly women. *J Strength Cond Res.* 2013;27:3475–80.
32. Fontes MT, Silva TLBT, Mota MM, et al. Resistance exercise acutely enhances mesenteric artery insulin-induced relaxation in healthy rats. *Life Sci.* 2014;94:24–9.
33. Cavalcante TCF, Silva AAM da, Lira MCA, et al. Early exposure of dams to a westernized diet has long-term consequences on food intake and physiometabolic homeostasis of the rat offspring. *Int J Food Sci Nutr.* 2014;65:989–93.
34. Seraphim PM, Nunes MT, Machado UF. GLUT4 protein expression in obese and lean 12-month-old rats: insights from different types of data analysis. *Braz J Med Biol Res.* 2001;34:1353–62.
35. Holten MK, Zacho M, Gaster M, et al. Strength training increases insulin-mediated glucose uptake, GLUT4 content, and insulin signaling in skeletal muscle in patients with type 2 diabetes. *Diabetes.* 2004;53:294–305.
36. Castaneda C, Layne JE, Munoz-Orians L, et al. A randomized controlled trial of resistance exercise training to improve

- glycemic control in older adults with type 2 diabetes. *Diabetes Care*. 2002;25:2335–41.
37. Halbert JA, Silagy CA, Finucane P, et al. Exercise training and blood lipids in hyperlipidemic and normolipidemic adults: a meta-analysis of randomized, controlled trials. *Eur J Clin Nutr*. 1999;53:514–22.
 38. Lindegaard B, Hansen T, Hvid T, et al. The effect of strength and endurance training on insulin sensitivity and fat distribution in human immunodeficiency virus-infected patients with lipodystrophy. *J Clin Endocrinol Metab*. 2008;93:3860–9.
 39. Kullo IJ, Ballantyne CM. Conditional risk factors for atherosclerosis. *Mayo Clin Proc*. 2005;80:219–30.