



Revista Portuguesa de
Cardiologia
Portuguese Journal of **Cardiology**
www.revportcardiol.org

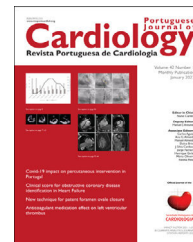


IMAGE IN CARDIOLOGY

Not your typical cardiac mass – Renal cell carcinoma invading the right atrium

Uma massa cardíaca atípica – carcinoma de células renais a invadir a aurícula direita

Catarina Isabel Ribeiro Carvalho*, Marta Catarina Ribeiro Bernardo,
Joana Trigo Ribeiro, Ana Isabel Santos Baptista, José Ilídio Azevedo Moreira

Trás-os-Montes and Alto Douro Hospital Centre – Department of Cardiology, Vila Real, Portugal

Received 5 September 2023; accepted 24 October 2023

A 67-year-old man, who underwent a right nephrectomy seven months ago due to renal cell carcinoma, presented with fever, *Staphylococcus hominis* bacteriemia and decompensated congestive heart failure.

An abdominal computed tomography (CT) revealed a distended inferior vena cava, which was assumed to be probable venous thrombosis. To exclude endocarditis, a transthoracic echocardiography (TEE) was performed, showing reduced ejection fraction (38%) due to global hypokinesia, and a large heterogeneous mass occupying almost the entire right atrium (Figure 1). The mass did not cause obstruction of the tricuspid valve but extended to the inferior vena cava. There were no signs of endocarditis.

The patient was then diagnosed with inferior vena cava syndrome due to vascular metastasis with associated throm-

bus and was transferred to the intensive care unit. Following 72 hours of unfractionated heparin perfusion, the repeat CT revealed no changes in the mass extension (Figure 2). After discussion with the vascular surgeon, cardiothoracic surgeon, urologist and oncologist, the patient is under evaluation for surgical resection of the tumor.

Renal cell carcinoma accounts for 3% of global cancer diagnosis, and its incidence has been increasing in the past years.¹ Although isolated cardiac metastasis is rare, the tumor can extend up the inferior vena cava, presenting typically as a “fingerlike” projection protruding into the right atrium on echocardiography.² Following its origin with echocardiography into the inferior vena cava may help differentiate it from other cardiac masses.

* Corresponding author.

E-mail address: catarina.ribcarvalho@gmail.com
(C.I. Ribeiro Carvalho).

<https://doi.org/10.1016/j.repc.2023.10.009>

0870-2551/© 2024 Sociedade Portuguesa de Cardiologia. Published by Elsevier España, S.L.U. This is an open access article under the CC BY-NC-ND license (<http://creativecommons.org/licenses/by-nc-nd/4.0/>).

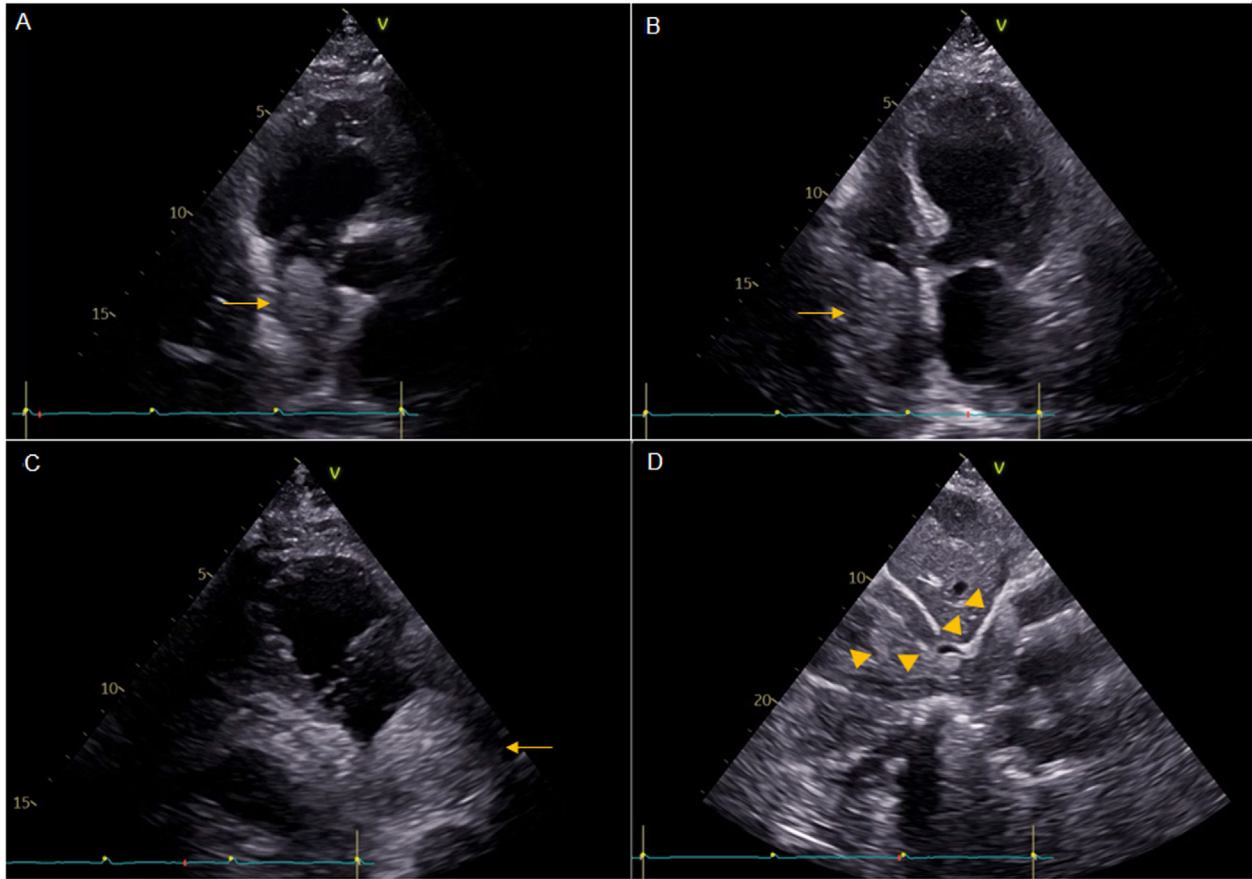


Figure 1 Transthoracic echocardiography revealing a large mass (yellow arrows) occupying almost the entire right atrium (A–C), without obstruction of the tricuspid valve, and extending into the inferior vena cava (D).

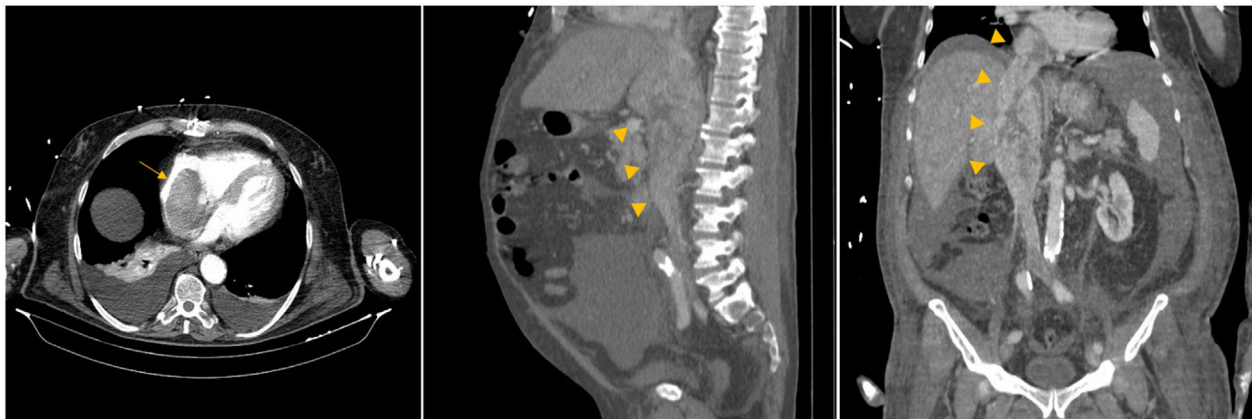


Figure 2 Computed tomography showing a large heterogeneous mass in the inferior vena cava, extending into the right atrium (yellow arrows).

This case highlights the importance of carefully considering the whole clinical context when evaluating a cardiac mass.

Conflicts of interest

The authors have no conflicts of interest to declare.

References

1. Sountoulides P, Metaxa L, Cindolo L. Atypical presentations and rare metastatic sites of renal cell carcinoma: a review of case reports. *J Med Case Rep.* 2011;5:429.
2. Otto C. *Textbook of clinical echocardiography.* 6th ed. Philadelphia: Elsevier; 2018. p. 426.