

ORIGINAL ARTICLE

# Long-term prognostic impact of beta-blockers in patients with Takotsubo syndrome: Results from the RETAKO Registry



Sergio Raposeiras-Roubín<sup>a,\*</sup>, Iván J. Núñez-Gil<sup>b</sup>, Karim Jamhour<sup>a</sup>, Emad Abu-Assi<sup>a</sup>, David Aritzta Conty<sup>c</sup>, Oscar Vedia<sup>b</sup>, Manuel Almendro-Delia<sup>d</sup>, Alessandro Sionis<sup>e</sup>, Agustín C. Martín-García<sup>f</sup>, Miguel Corbí-Pascual<sup>g</sup>, Manuel Martínez-Sellés<sup>h</sup>, Aitor Urizarri<sup>i</sup>, Marta Guillén<sup>j</sup>, José María García Acuña<sup>k</sup>, Javier Lopez País<sup>k</sup>, Emilia Blanco<sup>l</sup>, José A. Linares Vicente<sup>m</sup>, Alejandro Sánchez Grande Flecha<sup>n</sup>, Mireia Andrés<sup>o</sup>, Alberto Pérez-Castellanos<sup>p</sup>, Joaquín Alonso<sup>q</sup>, Xavier Rosselló<sup>r</sup>, Andrés Iñiguez Romo<sup>a</sup>, Gisela Feltes<sup>s</sup>, on behalf of RETAKO Investigators

<sup>a</sup> Cardiology Department, Hospital Universitario Álvaro Cunqueiro, Vigo, Spain

<sup>b</sup> Cardiology Department, Hospital Clínico San Carlos, Madrid, Spain

<sup>c</sup> Cardiology Department, Hospital de Navarra, Pamplona, Spain

<sup>d</sup> Cardiology Department, Hospital Universitario Virgen Macarena, Sevilla, Spain

<sup>e</sup> Cardiology Department, Hospital de Sant Pau, Barcelona, Spain

<sup>f</sup> Cardiology Department, Hospital Clínico Universitario de Salamanca, Salamanca, Spain

<sup>g</sup> Cardiology Department, Complejo Hospitalario de Albacete, Albacete, Spain

<sup>h</sup> Cardiology Department, Hospital General Universitario Gregorio Marañón, CIBERCV, Universidad Europea, Universidad Complutense, Madrid, Spain

<sup>i</sup> Cardiology Department, Hospital Clínico Universitario de Valladolid, Valladolid, Spain

<sup>j</sup> Cardiology Department, Hospital Joan XXIII, Tarragona, Spain

<sup>k</sup> Cardiology Department, Hospital Santiago de Compostela, Santiago de Compostela, Spain

<sup>l</sup> Cardiology Department, Hospital Arnau de Vilanova, Lérida, Spain

<sup>m</sup> Cardiology Department, Hospital Lozano Blesa, Zaragoza, Spain

<sup>n</sup> Cardiology Department, Hospital Universitario de Canarias, Spain

<sup>o</sup> Cardiology Department, Hospital Universitario Vall d'Hebron, Barcelona, Spain

<sup>p</sup> Cardiology Department, Hospital Universitario de Manacor, Mallorca, Spain

<sup>q</sup> Cardiology Department, Hospital Universitario de Getafe, Madrid, Spain

<sup>r</sup> Centro Nacional de Investigaciones Cardiovasculares (CNIC), Madrid, Spain

<sup>s</sup> Cardiology Department, Hospital Nuestra Señora de América, Madrid, Spain

Received 5 August 2021; accepted 9 February 2022

Available online 9 January 2023

\* Corresponding author.

E-mail address: raposeiras26@hotmail.com (S. Raposeiras-Roubín).

<https://doi.org/10.1016/j.repc.2022.02.010>

0870-2551/© 2023 Published by Elsevier España, S.L.U. on behalf of Sociedade Portuguesa de Cardiologia. This is an open access article under the CC BY-NC-ND license (<http://creativecommons.org/licenses/by-nc-nd/4.0/>).

## KEYWORDS

Takotsubo;  
Beta-blocker;  
Mortality;  
Recurrence

## Abstract

**Background:** No evidence-based therapy has yet been established for Takotsubo syndrome (TTS). Given the putative harmful effects of catecholamines in patients with TTS, beta-blockers may potentially decrease the intensity of the detrimental cardiac effects in those patients.

**Objective:** The purpose of this study was to assess the impact of beta-blocker therapy on long-term mortality and TTS recurrence.

**Methods:** The cohort study used the national Spanish Registry on TakoTsubo Syndrome (RETAKO). A total of 970 TTS post-discharge survivors, without pheochromocytoma, left ventricular outflow tract obstruction, sustained ventricular arrhythmias, and significant bradyarrhythmias, between January 1, 2003, and July 31, 2018, were assessed. Cox regression analysis and inverse probability weighting (IPW) propensity score analysis were used to evaluate the association between beta-blocker therapy and survival free of TTS recurrence.

**Results:** From 970 TTS patients, 582 (60.0%) received beta-blockers. During a mean follow-up of  $2.5 \pm 3.3$  years, there were 87 deaths (3.6 per 100 patients/year) and 29 TTS recurrences (1.2 per 100 patient/year). There was no significant difference in follow-up mortality or TTS recurrence in unadjusted and adjusted Cox analysis (hazard ratio [HR] 0.86, 95% confidence interval [CI] 0.59–1.27, and 0.95, 95% CI 0.57–1.13, respectively). After weighting and adjusting by IPW, differences in one-year survival free of TTS recurrence between patients treated and untreated with beta-blockers were not found (average treatment effect  $-0.01$ , 95% CI  $-0.07$  to  $0.04$ ;  $p=0.621$ ).

**Conclusions:** In this observational nationwide study from Spain, there was no significant association between beta-blocker therapy and follow-up survival free of TTS recurrence.

© 2023 Published by Elsevier España, S.L.U. on behalf of Sociedade Portuguesa de Cardiologia. This is an open access article under the CC BY-NC-ND license (<http://creativecommons.org/licenses/by-nc-nd/4.0/>).

## PALAVRAS-CHAVE

Takotsubo;  
Betabloqueante;  
Mortalidade;  
Recorrência

## Impacto prognóstico a longo prazo do uso de beta-bloqueantes em doentes com síndrome de Takotsubo: resultados do Registo RETAKO

### Resumo

**Introdução:** Ainda não foi estabelecido um tratamento baseado na evidência para a síndrome de Takotsubo (STT). Dados os efeitos supostamente nocivos das catecolaminas em doentes com STT, os betabloqueantes podem potencialmente diminuir a intensidade dos seus efeitos prejudiciais nesses doentes.

**Objetivo:** Avaliar o impacto da terapêutica com betabloqueantes na mortalidade a longo prazo e na recidiva da STT.

**Métodos:** O estudo coorte utilizou o registo nacional espanhol da síndrome de Takotsubo (RETAKO). Foram avaliados 970 sobreviventes de STT após a alta, sem feocromocitoma, sem obstrução do trato de saída do ventrículo esquerdo, sem arritmias ventriculares mantidas e sem bradiarritmias significativas, entre 1 de janeiro de 2003 e 31 de julho de 2018. A análise de regressão de Cox e a análise da ponderação de probabilidade inversa (PPI) foram utilizadas para avaliar a associação entre a terapia com betabloqueantes e a sobrevivência sem recidiva de STT.

**Resultados:** Dos 970 doentes com STT, 582 (60,0%) foram tratados com betabloqueantes. Durante um seguimento médio de  $2,5 \pm 3,3$  anos, houve 87 mortes (3,6 por 100 doentes/ano) e 29 recidivas de STT (1,2 por 100 doentes/ano). Não se verificaram diferenças significativas na mortalidade durante o seguimento, nem na recidiva de STT na análise Cox não ajustada e ajustada (*Hazard Ratio* [HR] 0,86, Intervalo de Confiança [IC] 95%, 0,59-1,27 e IC 95%  $-0,57-1,13$ , respetivamente). Após ponderação e ajuste por PPI, não foram também encontradas diferenças na sobrevivência a um ano e na recidiva de STT entre doentes tratados e não tratados com betabloqueantes (efeito médio do tratamento  $-0,01$ , IC 95%  $-0,07$  a  $0,04$ ;  $p=0,621$ ).

**Conclusão:** Neste estudo observacional de âmbito nacional em Espanha, não houve associação significativa entre a terapêutica com betabloqueantes e a sobrevivência ou recidivas de STT.

© 2023 Publicado por Elsevier España, S.L.U. em nome de Sociedade Portuguesa de Cardiologia. Este é um artigo Open Access sob uma licença CC BY-NC-ND (<http://creativecommons.org/licenses/by-nc-nd/4.0/>).

## Background

Beta-blockers are one of the medical therapies most frequently prescribed to patients with Takotsubo syndrome (TTS) at discharge.<sup>1</sup> Taking into account its physiopathology, it seems logical to use beta-blockers in order to protect against stressful triggers and subsequent catecholamine surges.<sup>2</sup> However, clinical uncertainty exists regarding their effectiveness in reducing mortality in TTS patients, since there is no evidence of any survival benefit of using beta-blockers after hospital discharge.<sup>3,4</sup>

Moreover, post-discharge beta-blocker therapy does not appear to prevent recurrence. Up to a third of patients experienced a TTS recurrence during treatment with beta-blockers, suggesting that other receptors such as alpha-receptors might be involved.<sup>5–7</sup> The International Expert Consensus Document on Takotsubo Syndrome suggests that beta-blockers might be useful for preventing recurrence of TTS in selected patients, especially those with persistent anxiety and elevated sympathetic tone.<sup>8</sup>

To the best of our knowledge, to date there are no analyses of large-scale datasets that have specifically investigated the impact of beta-blockers on survival after hospital discharge for TTS. The aim of this study is to fill this gap by assessing the long-term prognostic impact of beta-blockers in TTS patients according to the pattern and trigger.

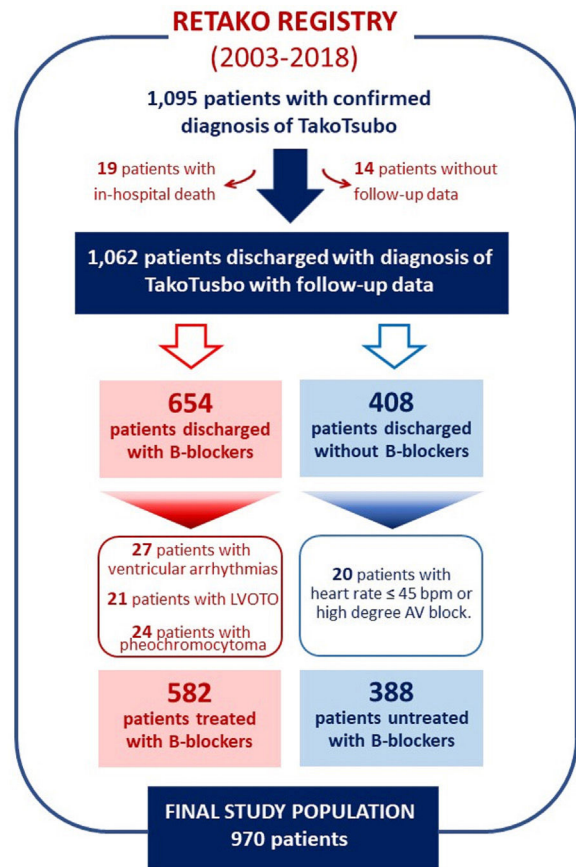
## Methods

### Study population

The analyses were based on data from the national multicenter RETAKO (Registry on Takotsubo Syndrome) trial, supported by the Ischemic Heart Disease and Acute Cardiovascular Care Section of the Spanish Society of Cardiology. It is a partially retrospective and prospective (from January 1, 2012, onwards), voluntary, observational study that enrolled TTS patients from 38 centers in Spain. Data were collected at each hospital, electronically encrypted and anonymized, and transferred online to a central database. Its rationale and design have been previously described.<sup>9,10</sup>

The main inclusion criteria required a definitive TTS diagnosis based on the modified Mayo Clinic criteria<sup>11</sup>: (1) transient left ventricular dysfunction with apical, midventricular, or basal segmental alterations extending beyond the territory supplied by a single coronary artery; (2) angiographic absence of significant obstructive coronary disease (luminal narrowing >50%) or a complicated (ruptured/thrombosed) atheroma; (3) new electrocardiographic changes (ST-segment elevation and/or negative T waves) and moderate elevation of cardiac troponins. Complete normalization of wall motion abnormalities and left ventricular ejection fraction (LVEF) was required, except in cases that died before complete normalization of LVEF.

Our cohort (N=970) was obtained from 1095 patients with final diagnosis of TTS admitted between January 1, 2003, and July 31, 2018 (see Figure 1). We excluded 19 (1.7%) patients who died in the hospital; 14 (1.3%) with missing mortality data; 24 (2.2%) with pheochromocytoma;



**Figure 1** Flow chart of study population. AV: atrioventricular; LVOTO: left ventricular outflow tract obstruction.

21 (1.9%) with left ventricular outflow tract obstruction (LVOTO), defined as a resting peak instantaneous gradient >25 mmHg in absence of inotropics; 27 (2.5%) with sustained ventricular arrhythmias; and 20 (1.8%) with baseline heart rate ≤45 bpm or high degree atrial-ventricular heart block. For the present study, beta-blocker use was determined according to whether eligible patients had received beta-blockers on discharge from the hospital.

The study complied with the Declaration of Helsinki and was approved by the Institutional Ethics Committee of Hospital Clínico San Carlos (Madrid, Spain). All patients provided written informed consent.

### Triggers and pattern of takotsubo syndrome

All the possible triggers in each patient were collected. Patients were categorized into groups according to the types of preceding stressors – emotional stress, physical stress, and no identifiable trigger – based on the recently proposed classification.<sup>12</sup> The pattern of LV dysfunction based on angiography or echocardiographic evaluation was classified as apical and non-apical types.<sup>8</sup> Apical type is characterized by hypokinesia, akinesia or dyskinesia of midventricular and apical parts of the anterior, septal, inferior and lateral walls of the left ventricle, associated with hyperkinesia of basal segments. Non-apical pattern includes all the remaining types (basal, midventricular, and focal types).

## Follow-up and outcomes

Follow-up after hospital discharge was conducted either by outpatient clinical visits or structured telephone interviews with patients or relatives. Follow-up outcomes were pre-specified and defined as the first non-fatal TTS recurrence or the occurrence of all-cause death. Recurrence was considered if a documented new non-fatal episode met the diagnostic criteria for TTS.<sup>11</sup> If a pre-specified outcome was observed, review of electronic medical records and consensus of two experienced local investigators were mandatory for event adjudication. Patients were censored if they did not experience the outcome of interest or were lost to follow-up.

## Statistical analysis

Baseline characteristics according to treatment with beta-blockers were described by using number and percentage for categorical data and mean  $\pm$  standard difference for continuous data. Differences in characteristics were assessed by using Chi-square tests and two-sample Student t-tests, for categorical and continuous variables, respectively.

The association between beta-blocker therapy and survival free of TTS recurrence was studied in robust Cox regression analysis. Multivariable model risk adjustments were performed with all variables associated with the combined outcome of post-discharge mortality or TTS recurrence based on clinical plausibility or p-value <0.1 in the univariate Cox analyses (Table 1 of the supplementary data). Estimates were expressed as hazard ratios (HRs) with their 95% confidence interval (CI). Proportionality of risk assumption of survival models was evaluated by plotting Schoenfeld residuals or by studying the interaction of covariates with time for the Cox proportional hazard models.

Given the substantial differences in key baseline characteristics depending on prescription of beta-blocker therapy, we performed a sensitivity analysis using a propensity score (PS) analysis. PSs were estimated using a non-parsimonious multivariable logistic regression model, with beta-blocker therapy as the dependent variable and those characteristics that differed between patients treated and not treated with beta-blockers (Table 1) as covariates. Survival time inverse probability weighting (IPW) PS analysis was used to evaluate the association between beta-blocker therapy and survival free of TTS recurrence. The effect of beta-blockers was graphically represented in Kaplan-Meier curves adjusted by IPW, to balance the covariate distribution between the treatment and control observations.<sup>13</sup> We complemented the analysis with an augmented IPW (AIPW) to estimate the average treatment effect (ATE) of beta-blockers in one-year survival free of TTS recurrence, using a doubly robust method that combined both the properties of the regression-based estimator and the IPW estimator.<sup>14</sup> Subsequent PS matching (PSM) was performed to assemble a cohort in which all the measured covariates would be well balanced across the comparator group. PSM was performed with 1:1 nearest-neighbor matching without replacement and with a caliper width of 0.2 of the standard deviation of all PSs. Standard mean differences were estimated for all covariates before and after matching to assess pre-matching imbalance and

post-matching balance; standard mean differences of <10% for a given covariate were considered as indicators of adequate balance (Table 2). In the PS-matched population, the reduction in mortality and/or TTS recurrence was compared using a stratified Cox regression model.

Analysis of follow-up mortality and TTS recurrence was also performed in subgroups defined according to age (<75 years or  $\geq$ 75 years), sex, presence of coronary artery disease, atrial fibrillation/flutter, chronic obstructive pulmonary disease (COPD), Killip class, status of cardiogenic shock, and therapy with angiotensin-converting enzyme inhibitors or angiotensin receptor blockers (ACEI/ARB) on discharge. Treatment-by-subgroup interactions were tested using a Cox proportional hazards model adjusted by IPW, containing the beta-blocker therapy, subgroup, and the treatment-by-subgroup interaction.

A two-tailed  $p < 0.05$  indicated statistical significance. Statistical analyses were performed using Stata 15.1 (Stata-Corp, College Station, Texas).

## Results

### Comparison of Takotsubo patients treated and untreated with beta-blockers

Among the 970 patients with TTS included in this study, 582 patients (60.0%) were treated with beta-blockers. There were significant differences in baseline characteristics between patients with and without beta-blocker treatment (Table 1). In particular, patients who did not receive beta-blockers were more frequently comorbid, including COPD (20.6% vs. 11.9%) and history of cancer (13.9% vs. 9.3%). Compared with patients untreated with beta-blockers, those who received beta-blockers tended to be treated with higher rates of aspirin (56.5% vs. 32.2%;  $p < 0.001$ ), ACEI/ARB (73.2% vs. 43.3%;  $p < 0.001$ ), and statins (59.3% vs. 34.0%;  $p < 0.001$ ).

### Prognosis according to beta-blocker therapy

For the entire cohort, during a mean follow-up of  $2.5 \pm 3.3$  years, there were 87 deaths (3.6 per 100 patients/year) and 29 TTS recurrences (1.2 per 100 patients/year). Unadjusted mortality rates were similar for patients who received beta-blockers compared with those who did not [3.3 (95% CI 2.4–4.3) vs. 4.2 (95% CI 3.1–5.7) per 100 patients/year, respectively;  $p = 0.254$ ]. A similar result was found for TTS recurrence [1.4 (95% CI 0.9–2.1) vs. 0.9 (95% CI 0.4–1.8) per 100 patients/year, respectively;  $p = 0.278$ ]. After multivariate adjustment (including age, sex, hypertension, diabetes mellitus, smoking, coronary artery disease, prior stroke, prior beta-blocker therapy, COPD, history of cancer, Killip  $\geq$  II on admission, atrial fibrillation/flutter, creatinine  $\geq$  1.5 mg/dl, apical vs. non-apical TTS, emotional or physical trigger, and medication at discharge – aspirin, P2Y12 inhibitors, oral anticoagulation, ACEI/ARB, calcium channel blockers, diuretics, statins, anxiolytics, and antidepressants), there were no significant differences in the composite outcome of mortality or TTS recurrence between patients treated and untreated with beta-blockers (adjusted HR 0.95, 95% CI 0.57–1.53;  $p = 0.794$ ).

**Table 1** Baseline characteristics according to the prescription of beta-blockers.

Variables	Total population (n=970)	beta-Blockers (n=582, 60.0%)	Non beta-blockers (n=388, 40.0%)	p-Value
Age	70.8 ± 11.7	70.5 ± 11.4	71.3 ± 12.0	0.319
Female sex	854 (88.0%)	523 (89.9%)	331 (85.3%)	0.032
<i>Cardiovascular risk factors</i>				
Smoking	125 (12.9%)	66 (11.3%)	59 (15.2%)	0.078
Hypertension	628 (64.7%)	393 (67.5%)	235 (60.6%)	0.026
Dyslipemia	444 (45.8%)	272 (46.7%)	172 (44.3%)	0.461
Diabetes mellitus	184 (19.0%)	112 (19.2%)	72 (18.6%)	0.789
<i>Cardiovascular history</i>				
Peripheral artery disease	32 (3.3%)	22 (3.8%)	10 (2.6%)	0.304
Coronary artery disease	70 (7.2%)	40 (6.9%)	30 (7.7%)	0.612
Prior stroke	70 (7.2%)	50 (8.6%)	20 (5.2%)	0.043
Prior beta-blocker therapy	91 (9.4%)	72 (12.4%)	19 (4.9%)	<0.001
<i>Comorbidities</i>				
COPD	149 (15.4%)	69 (11.9%)	80 (20.6%)	<0.001
History of cancer	108 (11.1%)	54 (9.3%)	54 (13.9%)	0.024
<i>Presenting characteristics</i>				
Killip ≥ II at admission	318 (32.8%)	176 (30.2%)	142 (36.6%)	0.039
Atrial fibrillation/flutter	172 (17.7%)	104 (17.9%)	68 (17.5%)	0.891
Bundle branch block	54 (5.6%)	38 (6.5%)	16 (4.1%)	0.109
Creatinine >1.5 mg/dl	47 (4.8%)	35 (6.0%)	12 (3.1%)	0.038
<i>Treatment at discharge</i>				
Aspirin	454 (46.8%)	329 (56.5%)	125 (32.2%)	<0.001
P2Y12 inhibitor	67 (6.9%)	49 (8.4%)	18 (4.6%)	0.023
Oral anticoagulation	166 (17.1%)	117 (20.1%)	49 (12.6%)	0.002
ACEI/ARB	594 (61.2%)	426 (73.2%)	168 (43.3%)	<0.001
Calcium channel blockers	85 (8.8%)	38 (6.5%)	47 (12.1%)	0.003
Nitrates	35 (3.6%)	21 (3.6%)	14 (3.6%)	1.00
Diuretics	227 (23.4%)	147 (25.3%)	80 (20.6%)	0.095
Statins	477 (49.2%)	345 (59.3%)	132 (34.0%)	<0.001
Anxiolytic medication	268 (27.6%)	187 (32.1%)	81 (20.9%)	<0.001
Antidepressant therapy	130 (13.4%)	90 (15.5%)	40 (10.3%)	0.021

Values are mean ± standard difference or n (%).

ACEI/ARB: angiotensin-converting enzyme inhibitors (ACEI) and angiotensin receptor blockers; COPD: chronic obstructive pulmonary disease.

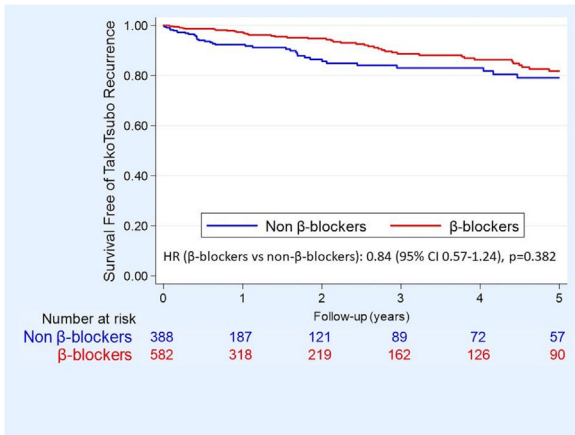
**Table 2** Average treatment effect (ATE) of beta-blockers in mortality and recurrence of Takotsubo (TTS) after weighting and adjustment for baseline characteristics.

TTS population and subgroups	Average treatment effect		
	Coefficient	95% confidence interval	p-Value
Total TTS	-0.01	-0.07 to 0.04	0.621
<i>TTS type by location</i>			
Apical TTS	-0.04	-0.11 to 0.03	0.292
Non-apical TTS	0.06	-0.04 to 0.15	0.256
<i>Classification by trigger</i>			
Emotional stress	0.01	-0.10 to 0.12	0.871
Physical stress	0.03	-0.06 to 0.11	0.517
Non identifiable trigger	-0.08	-0.19 to 0.03	0.132

ATE: average treatment effect; TTS: Takotsubo syndrome.

The average treatment effects (ATEs) represent the absolute difference in mortality or TTS recurrence at one year between beta-blockers treatment versus no treatment across the whole cohort (comparing mortality and TTS recurrence in a scenario in which all patients were treated versus mortality and TTS recurrence in a scenario in which no patients were treated).





**Figure 2** Kaplan-Meier curves adjusted by inverse probability weighting (IPW) propensity score analysis.

### Propensity score analysis

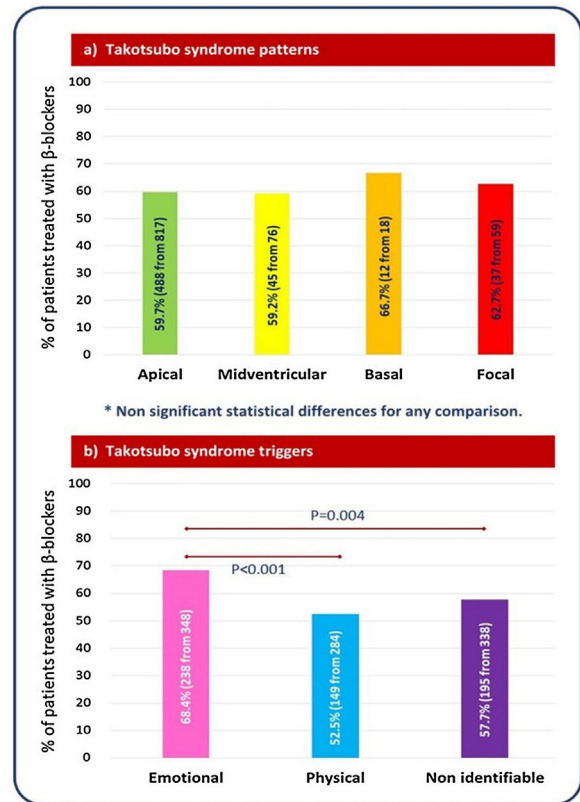
For the balanced PS analysis, 566 patients were removed (380 from the beta-blocker group and 186 from the non-beta-blocker group), leaving 404 patients (202 in each group). Overlap assumption assessment and balance checks were conducted and the results are summarized in [Table 2 of the supplementary data](#). The area under the curve for the PS model was 0.87 (95% CI 0.85–0.89), which indicated a good discrimination for the model. Beta-blocker therapy was not associated with significant differences in mortality or TTS recurrence neither after adjusting by IPW ([Figure 2](#)) nor after PS matching (HR 0.85, 95% CI 0.46–1.60,  $p=0.621$ ). After weighting and adjustment, differences in one-year survival free of TTS recurrence between patients treated and untreated with beta-blockers were not found (average treatment effect (ATE) 95%  $-0.01$  95% CI  $-0.07$  to  $0.04$ ;  $p=0.621$ ) ([Table 2](#)).

### Impact of beta-blocker therapy according to Takotsubo syndrome type and trigger

Beta-blocker therapy was similarly prescribed in the four major TTS types ([Figure 3A](#)). Lack of benefit of beta-blockers in terms of follow-up mortality and/or TTS recurrence was consistent across different TTS types ([Figure 4](#): central illustration). In the PS-matched population, the HR for mortality or TTS recurrence of beta-blockers in patients with apical TTS was 0.68 (95% CI 0.34–1.36,  $p$ -value=0.277), and in patients with non-apical TTS was 2.62 (95% CI 0.54–12.65,  $p$ -value=0.231). Regarding to the trigger, beta-blocker therapy was most frequently prescribed in patients with TTS related to emotional stress (68.4% vs. 52.5% in TTS related to physical stress, and 57.7% in TTS without an identifiable triggering factor) ([Figure 3B](#)). However, no differences in mortality and TTS recurrence were found between patients treated and untreated with beta-blockers, neither after PSM ([Figure 4](#): central illustration) nor after IPW ([Table 2](#)).

### Subgroup analysis

Subgroup analysis after adjusting by IPW has not found a benefit of beta-blockers in any group ([Table 3](#)). Even in patients



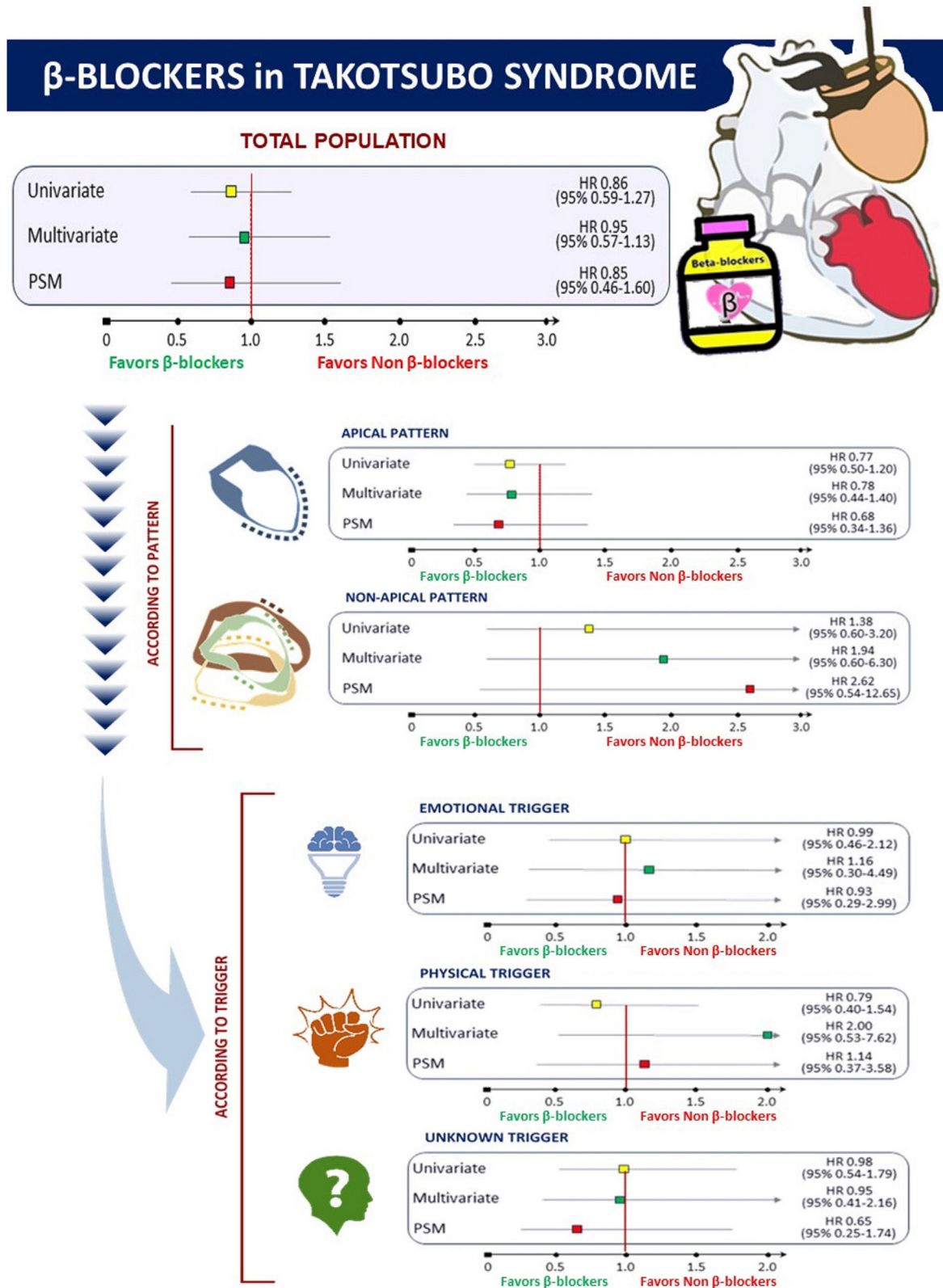
**Figure 3** Rate of beta-blocker prescription according to the type and trigger of Takotsubo.

with COPD, beta-blockers were associated with higher rates of mortality or TTS recurrence (HR 2.42, 95% CI 1.07–5.49;  $p=0.034$ ) ([Table 3](#)).

### Discussion

In this observational nationwide cohort study of TTS survivors, the use of beta-blockers was not associated with mortality or TTS recurrence.

A major role of excessive adrenergic overstimulation leading to myocardial stunning has been advocated as possible explanation of the pathophysiology of TTS.<sup>2</sup> In this context, beta-blockers could potentially reduce the myocardial damage caused by a sympathetic drive. However, our results have not confirmed this hypothesis. Moreover, our lack of association between beta-blockers in TTS and poor outcomes are consistent with other previous studies. In this sense, Isogai et al. examined whether early beta-blocker therapy in patients with TTS was associated with lower in-hospital mortality.<sup>3</sup> Using PSM and instrumental variable analyses in 2672 TTS patients, they did not find significant association between early beta-blocker use and in-hospital mortality (odds ratio (OR) 1.08, 95% CI 0.59–1.96,  $p=0.812$ ). In addition to the results of the Japanese TTS registry, in the InterTAK study there was no evidence of any survival benefit at one year for the use of beta-blockers.<sup>4</sup> Moreover, of 57 patients with recurrent TTS in the InterTAK, 29 were taking beta-blockers at the time of the second event. And two meta-analyses were consistent with the neutral effect of beta-blockers in survival free of TTS recurrence. In the



**Figure 4** Prognostic impact of beta-blocker therapy in Takotsubo syndrome according to location and trigger. HR: hazard ratio.

meta-analysis of Singh et al., with 847 patients, there was no significant association between the rate of TTS recurrence and use of beta-blockers ( $p=0.280$ ).<sup>7</sup> Similarly,

in the meta-analysis of clinical non-randomized registries conducted by Santoro et al., with 471 subjects, the recurrence rate was 1.81% (6 of 331) in those treated with beta

**Table 3** Subgroup analyses of follow-up mortality and Takotsubo recurrence after adjusting by inverse probability weighting (IPW) propensity score analysis.

Subgroup	HR	95% CI	p	P for interaction
<i>Age</i>				
<75 years	1.11	0.55–2.21	0.773	0.594
≥75 years	0.84	0.52–1.37	0.423	
<i>Gender</i>				
Female	1.94	0.51–7.44	0.334	0.136
Male	0.75	0.50–1.14	0.179	
<i>Coronary artery disease</i>				
Yes	1.64	0.48–5.67	0.433	0.339
No	0.80	0.53–1.21	0.293	
<i>Atrial fibrillation/flutter</i>				
Yes	0.65	0.29–1.45	0.294	0.628
No	0.88	0.56–1.38	0.568	
<i>COPD</i>				
Yes	0.75	0.47–1.18	0.212	0.004
No	2.42	1.07–5.49	0.034	
<i>Killip class</i>				
I	0.94	0.53–1.64	0.823	0.644
≥II	0.77	0.45–1.32	0.345	
<i>Cardiogenic shock</i>				
Yes	0.31	0.10–1.59	0.162	0.163
No	0.93	0.62–1.40	0.731	
<i>ACEI/ARB</i>				
Yes	1.02	0.55–1.90	0.945	0.866
No	0.93	0.53–1.62	0.794	

ACEI/ARB: angiotensin-converting enzyme inhibitors (ACEI) and angiotensin receptor blockers; CI: confidence interval; COPD: chronic obstructive pulmonary disease; HR: hazard ratio.

-blockers, compared with 2.86% (4 of 140) in controls (OR: 0.44, 95% CI: 0.15–1.31,  $p=0.790$ ).<sup>6</sup> All these data suggest that beta-blockers are not effective in preventing TTS.

One possible pathophysiological explanation justifying our findings might be that the potential protective effect of beta-blockers might be hampered by some paradox phenomena. Paur et al. have proved that beta-blockers that activate beta<sub>2</sub> adrenoceptor (AR) to inhibitory G (G<sub>i</sub>) protein signaling (beta<sub>2</sub>AR-G<sub>i</sub>) might exacerbate the epinephrine-induced negative inotropic effect.<sup>15</sup> High doses of epinephrine can act as a negative inotrope via ligand-mediated trafficking of the beta<sub>2</sub>-AR from stimulatory G (G<sub>s</sub>) protein to G<sub>i</sub> protein subcellular signaling pathways, a process described as biased agonism.<sup>16</sup> This switch would be favored in conditions of high catecholamine stress because it depends on beta<sub>2</sub>-AR phosphorylation by both protein kinase A (PKA) and G-protein receptor-coupled kinases (GRKs).<sup>17</sup> This is particularly relevant given the increased frequency of the L41Q GRK5 polymorphism, known to increase cardiac GRK5 activity and beta-AR phosphorylation, in a recent study that genotyped patients with Takotsubo cardiomyopathy.<sup>18</sup> The G<sub>i</sub>-dependent negative effect of beta-blockers was most readily seen in myocytes from failing human hearts (in which G<sub>i</sub> is increased), but the group of Paur et al. also analyzed it in TTS patients.<sup>15</sup> They evaluated the response of a TTS animal model induced by epinephrine bolus infusion

to a propranolol, carvedilol and bisoprolol. Propranolol, a beta-blocker with higher beta<sub>2</sub>-AR-G<sub>i</sub> agonism, enhanced the negative effects of epinephrine at both apex and base, whereas carvedilol, with lower beta<sub>2</sub>-AR-G<sub>i</sub> agonism, had little effect on the apex but decreased the base contraction. In contrast, the beta<sub>1</sub>-AR selective blocker bisoprolol reduced the positive effect of epinephrine at the base but without effect on the apical epinephrine response. Therefore, drugs with high beta<sub>2</sub>-AR-G<sub>i</sub> agonism (e.g., propranolol, carvedilol) should be avoided in TTS patients. In this sense, there are very few studies that evaluated the impact of the type of beta-blocker on clinical outcomes in this context. A retrospective study by Palla et al. found that, in 64 patients with TTS, of which 16 were taking a beta-blocker on presentation (metoprolol succinate [50%], metoprolol tartrate [37.5%], or atenolol [12.5%]), pretreatment with low dose beta-adrenergic antagonist therapy does not affect severity of TTS presentation.<sup>19</sup> Another important issue that remains to be elucidated is the role of beta-blockers dose. The adrenergic blockade achieved with commonly used doses of beta-adrenergic antagonists may not be sufficient to effectively antagonize the supraphysiologic. Unfortunately, we lack information about the type and dose of beta-blocker therapy.

In our subgroup analysis, there was a significant interaction between beta-blocker therapy and COPD on follow-up



mortality or TTS recurrence. In COPD patients with TTS, beta-blockers were associated with higher rates of mortality or TTS recurrence, whereas in non-COPD patients, survival free of TTS recurrence was similar in patients treated and untreated with beta-blockers. Although this result should be interpreted cautiously because of the number of patients and the observational – non-randomized – nature of our study, these findings are consistent with the results from the prospective, randomized, BLOCK COPD trial, that showed metoprolol treatment was associated with almost double the risk of experiencing an exacerbation leading to hospitalization (HR 1.91, 95% CI 1.29–2.83) in COPD patients without cardiovascular disease.<sup>20</sup>

Regarding cardiogenic shock, we have not found an interaction or benefit of beta-blockers in TTS patient with or without cardiogenic shock. Almendro-Delia et al. have previously found a possible association between beta-blockers and a better long-term prognosis of TTS patients.<sup>9</sup> Individuals prone to developing hemodynamic instability and cardiogenic shock in the acute phase of TTS may constitute a high-risk phenotype in which predisposing factors could converge: (1) an exaggerated sympathetic activation in response to triggering events; (2) greater susceptibility to catecholamine mediated myocardial injury; or (3) the presence of a decreased cardiac reserve masking a long-term heart failure phenotype as a marker for underlying disease severity.<sup>9</sup> The preceding features could lead to a potential long-term prognostic benefit of beta-blockers in TTS patients who present with cardiogenic shock. However, our results, after excluding patients with LVOTO and ventricular arrhythmias, have not confirmed those hypotheses.

To date neither the short- nor long-term prognostic impact of beta-blockers according to the type and trigger of TTS has been proven.<sup>21</sup> Previous studies have suggested the existence of different phenotypes within the clinical spectrum of TTS, with different prognosis.<sup>4,12</sup> In our study, we have assessed the prognosis of beta-blocker therapy in patients with apical versus non-apical TTS. It has been recently shown that the apical ventricular region has a greater beta2:beta1 adrenoceptor ratio, with a higher responsiveness and vulnerability to sympathetic stimulation.<sup>22</sup> The different occurrence of wall motion abnormalities could be explained by interindividual anatomical differences in the distribution of beta-adrenergic receptors. Although in our study treatment with beta-blockers was associated with better prognosis in patients with apical TTS and worse prognosis in those with non-apical TTS, the differences were not significant. Regarding the trigger, we have not found a benefit of beta-blockers in any of the three groups (emotional stress, physical stress, and no identifiable trigger).

Finally, although the present study did not investigate the underlying pathophysiology of TTS, our results regarding beta-blocker therapy might suggest that other pathophysiological pathways such as an inflammatory<sup>23</sup> or energetic-metabolic pathway<sup>24</sup> need to be explored to identify a suitable therapy for TTS.

### Study limitations

Our results should be interpreted in the context of several limitations. First, it is possible that various subclasses,

doses and durations of beta-blocker therapy were used in this study. This heterogeneity of beta-blocker therapy might have affected the outcomes. However, those data were not collected in our registry. In addition, we have no data about rates of discontinuation or new prescriptions during follow-up. Second, because of its observational nature, unmeasured confounders constrain causal inference in the present study. Although propensity scoring and further adjustments were made for many additional confounders in the survival models, residual confounding is likely to happen anyway. So cautious interpretation is encouraged and, therefore, prognostic associations should be considered exploratory. Nonetheless, our results are consistent with other non-randomized data. Clearly, a randomized controlled trial is necessary to further investigate the issues surrounding beta-blocker use in TTS.

### Conclusions

Among TTS patients who survived hospitalization, beta-blocker therapy was not associated with lower mortality and TTS recurrence after addressing potential confounding by adjusting and using PS methods. This result adds to the increasing body of evidence that the routine prescription of beta-blockers might not be indicated in patients with TTS.

### Funding

The Retako webpage was funded by a non-conditional Astrazeneca scholarship.

### Conflict of interest

None declared.

### Appendix A. Supplementary data

Supplementary material associated with this article can be found in the online version at [doi:10.1016/j.repc.2022.02.010](https://doi.org/10.1016/j.repc.2022.02.010).

### References

1. Medina de Chazal H, Del Buono MG, Keyser-Marcus L, et al. Stress cardiomyopathy diagnosis and treatment: JACC state-of-the-art review. *J Am Coll Cardiol*. 2018;72:1955–71.
2. Pelliccia F, Kaski JC, Crea F, et al. Pathophysiology of Takotsubo syndrome. *Circulation*. 2017;135:2426–41.
3. Isogai T, Matsui H, Tanaka H, et al. Early beta-blocker use and in-hospital mortality in patients with Takotsubo cardiomyopathy. *Heart*. 2016;102:1029–35.
4. Templin C, Ghadri JR, Diekmann J, et al. Clinical features and outcomes of Takotsubo (stress) cardiomyopathy. *N Engl J Med*. 2015;373:929–38.
5. Brunetti ND, Santoro F, De Gennaro L, et al. Drug treatment rates with beta-blockers and ACE-inhibitors/angiotensin receptor blockers and recurrences in Takotsubo cardiomyopathy: a meta-regression analysis. *Int J Cardiol*. 2016;214:340–2.
6. Santoro F, Ieva R, Musaico F, et al. Lack of efficacy of drug therapy in preventing takotsubo cardiomyopathy recurrence: a meta-analysis. *Clin Cardiol*. 2014;37:434–9.

7. Singh K, Carson K, Usmani Z, et al. Systematic review and meta-analysis of incidence and correlates of recurrence of Takotsubo cardiomyopathy. *Int J Cardiol.* 2014;174:696–701.
8. Ghadri JR, Wittstein IS, Prasad A, et al. International expert consensus document on Takotsubo syndrome. Part II: diagnostic workup outcome, and management. *Eur Heart J.* 2018;39:2047–62.
9. Almendro-Delia M, Nunez-Gil IJ, Lobo M, et al. Short- and long-term prognostic relevance of cardiogenic shock in Takotsubo syndrome: results from the RETAKO Registry. *JACC Heart Fail.* 2018;6:928–36.
10. Núñez Gil IJ, Andrés M, Almendro Delia M, et al. Characterization of Tako-tsubo cardiomyopathy in Spain: results from the RETAKO National Registry. *Rev Esp Cardiol (Engl Ed).* 2015;68:505–12.
11. Prasad A, Lerman A, Rihal CS. Apical ballooning syndrome (Tako-Tsubo or stress cardiomyopathy): a mimic of acute myocardial infarction. *Am Heart J.* 2008;155:408–17.
12. Ghadri JR, Kato K, Cammann VL, et al. Long-term prognosis of patients with Takotsubo syndrome. *J Am Coll Cardiol.* 2018;72:874–82.
13. Xie J, Liu C. Adjusted Kaplan-Meier estimator and log-rank test with inverse probability of treatment weighting for survival data. *Stat Med.* 2005;24:3089–110.
14. Tao Y, Fu H. Doubly robust estimation of the weighted average treatment effect for a target population. *Stat Med.* 2019;38:315–25.
15. Paur H, Wright PT, Sikkell MB, et al. High levels of circulating epinephrine trigger apical cardiodepression in a beta2-adrenergic receptor/Gi-dependent manner: a new model of Takotsubo cardiomyopathy. *Circulation.* 2012;126:697–706.
16. Heubach JF, Ravens U, Kaumann AJ. Epinephrine activates both Gs and Gi pathways, but norepinephrine activates only the Gs pathway through human beta2-adrenoceptors overexpressed in mouse heart. *Mol Pharmacol.* 2004;65:1313–22.
17. Daaka Y, Luttrell LM, Lefkowitz RJ. Switching of the coupling of the beta2-adrenergic receptor to different G proteins by protein kinase A. *Nature.* 1997;390:88–91.
18. Spinelli L, Trimarco V, Di Marino S, et al. L41Q polymorphism of the G protein coupled receptor kinase 5 is associated with left ventricular apical ballooning syndrome. *Eur J Heart Fail.* 2010;12:13–6.
19. Palla AR, Dande AS, Petrini J, et al. Pretreatment with low-dose beta-adrenergic antagonist therapy does not affect severity of Takotsubo cardiomyopathy. *Clin Cardiol.* 2012;35:478–81.
20. Dransfield MT, Voelker H, Bhatt SP, et al. Metoprolol for the prevention of acute exacerbations of COPD. *N Engl J Med.* 2019;381:2304–14.
21. Dias A, Núñez Gil IJ, Santoro F, et al. Takotsubo syndrome: state-of-the-art review by an expert panel – Part 1. *Cardiovasc Revasc Med.* 2019;20:70.
22. Lyon AR, Rees PS, Prasad S, et al. Stress (Takotsubo) cardiomyopathy – a novel pathophysiological hypothesis to explain catecholamine-induced acute myocardial stunning. *Nat Clin Pract Cardiovasc Med.* 2008;5:22–9.
23. Wilson HM, Cheyne L, Brown PAJ, et al. Characterization of the myocardial inflammatory response in acute stress-induced (Takotsubo) cardiomyopathy. *JACC Basic Transl Sci.* 2018;3:766–78.
24. Dawson DK, Neil CJ, Henning A, et al. Tako-Tsubo cardiomyopathy: a heart stressed out of energy? *JACC Cardiovasc Imaging.* 2015;8:985–7.