



IMAGE IN CARDIOLOGY

Cardiac metastasis of primary bronchial carcinoid

Carcinóide brônquico primário com metastização miocárdica

Pedro Gonçalves-Teixeira^{a,b,*}, Ricardo Ladeiras-Lopes^{a,b}, Nuno Dias Ferreira^a

^a Cardiology Department, Gaia Hospital Center, Vila Nova de Gaia, Portugal

^b Department of Surgery and Physiology, Faculty of Medicine, University of Porto, Porto, Portugal

Received 12 August 2020; accepted 13 September 2020

Available online 11 June 2021

A 46-year-old male was referred to the cardio-oncology clinic for comprehensive cardiovascular assessment. He had a medical history of bronchial carcinoid, having undergone left pneumonectomy 20 years earlier, and was diagnosed with stage IV disease (bone and liver metastasis). A ⁶⁸Ga-DOTATOC positron emission tomography (PET) scan in July 2019 was notable due to two foci of abnormally high radionuclide uptake at the left inferolateral aspect of the cardiac silhouette (Figure 1, upper left panel).

He had no cardiovascular symptoms. Clinical examination was unremarkable. The electrocardiogram showed sinus rhythm with no ST-T abnormalities. Transthoracic and transesophageal echocardiograms revealed no relevant structural or functional abnormality. Cardiac magnetic resonance imaging (MRI) showed two rounded, well-defined intramyocardial high signal intensity lesions in T2-weighted sequences, at the medium and distal segments of the

anterolateral wall (Figure 1, right lower panel, dark arrow). These two lesions showed isosignal intensity in T1-weighted images, and intense early (Figure 1, right upper panel, dashed arrow) and late (Figure 1, left lower panel, white arrows) gadolinium enhancement. The anatomic correspondence between PET and cardiac MRI lesions led to diagnosis of cardiac metastasis of primary bronchogenic carcinoid.

Carcinoid tumors are uncommon neuroendocrine (NE) neoplasms that produce high levels of serotonin. These tumors are more frequently found in the gastrointestinal tract but are primary bronchial in about one quarter of cases. Carcinoid heart disease (CHD) can occur in up to 50% of cases, more often with right-sided valve disease, a consequence of NE mediators progressively seeding over valvular and subvalvular structures, with progressive thickening and dysfunction. Approximately 4% of CHD cases present with cardiac metastasis, with lesions being mostly described as

* Corresponding author.

E-mail address: pedromgoncalvesteixeira@gmail.com
 (P. Gonçalves-Teixeira).

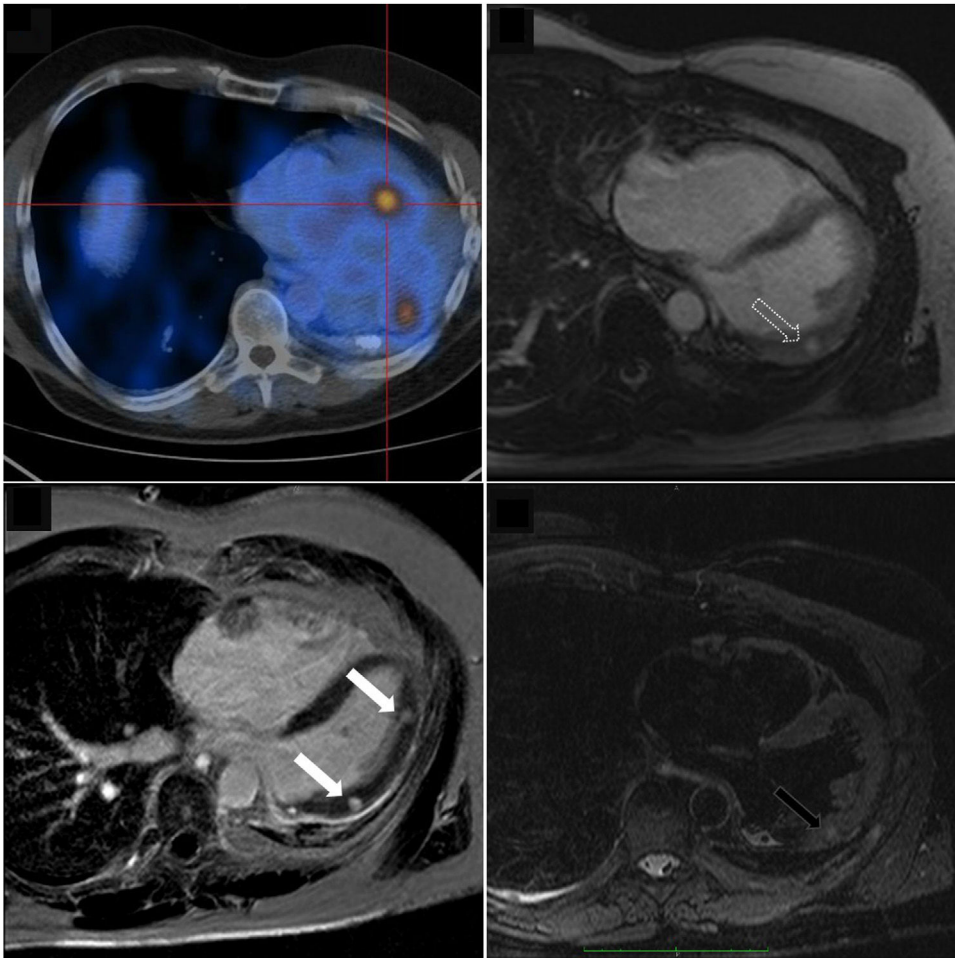


Figure 1 Right lower panel: Cardiac magnetic resonance imaging showing two rounded, well-defined intramyocardial high signal intensity lesions in T2-weighted sequences, at the medium and distal segments of the anterolateral wall (dark arrow). These two lesions showed isosignal intensity in T1-weighted images, and intense early (upper right panel, dashed arrow) and late (lower left panel, white arrows) gadolinium enhancement; Upper left panel: Positron emission tomography image shows increased ^{68}Ga -DOTATOC uptake, further supporting the anatomic correspondence of these foci.

rounded, homogeneous intramyocardial masses. Depending on their functional and/or symptomatic repercussion, along with size considerations, surgical resection may be indicated.

Conflicts of interest

The authors have no conflicts of interest to declare.