



CASE REPORT

Whole-genome DNA sequencing: The key to detecting a sarcomeric mutation in a ‘false genotype-negative’ family with hypertrophic cardiomyopathy



Ana Catarina Gomes^{a,*}, Pedro Santos Barbosa^b, Ana Coutinho^c, Inês Cruz^a,
Maria Carmo-Fonseca^b, Luís Rocha Lopes^{d,e}

^a Cardiology Department, Garcia de Orta Hospital, Portugal

^b Instituto de Medicina Molecular, Faculdade de Medicina da Universidade de Lisboa, Portugal

^c Genomed, Diagnóstico de Medicina Molecular SA - Instituto de Medicina Molecular, Faculdade de Medicina da Universidade de Lisboa, Portugal

^d Centre for Heart Muscle Disease, Institute of Cardiovascular Science, University College London, UK

^e Barts Heart Centre, Barts Health NHS Trust, UK

Received 27 September 2018; accepted 10 March 2019

Available online 22 May 2020

KEYWORDS

Hypertrophic cardiomyopathy;
Genetic testing;
Whole-genome sequencing;
MYBPC3;
Intronic variant

Abstract The authors report the clinical and genetic investigation of a family with hypertrophic cardiomyopathy (HCM). The individuals described are three affected first-degree relatives (father, daughter and son), one affected niece and unaffected nephew and niece. Those affected all share a very similar phenotype consisting of asymmetric HCM, with hypertrophy particularly affecting the septum and the anterior wall, and similar electrocardiographic features, including a short PR interval. Case 1 (proband) presented with obstructive HCM and had undergone myectomy and mitral valve replacement. Case 2 (oldest offspring of Case 1) had non-obstructive HCM with exertional angina and NYHA II heart failure (HF) symptoms; she developed non-sustained ventricular tachycardia during follow-up and received a single-chamber ICD for primary prevention of sudden cardiac death. Case 3 (son of case 1) presented with asymptomatic non-obstructive HCM and developed NYHA II HF symptoms during follow-up. Case 4 had non-obstructive HCM, mainly with NYHA II HF symptoms. Testing of the proband for sarcomeric mutations and phenocopies was initially negative. After eight years of clinical follow-up, the suspicion of an undiscovered pathogenic gene mutation shared among the members of this family led us to enroll the proband in a whole-genome sequencing research project, which revealed a heterozygous pathogenic intronic *MYBPC3* variant (c.1227-13G>A [rs397515893]), cosegregating with the phenotype.

© 2020 Sociedade Portuguesa de Cardiologia. Published by Elsevier España, S.L.U. This is an open access article under the CC BY-NC-ND license (<http://creativecommons.org/licenses/by-nc-nd/4.0/>).

* Corresponding author.

E-mail address: anacatarina.d.gomes@gmail.com (A.C. Gomes).

PALAVRAS-CHAVE

Miocardíopatia hipertrófica;
Estudo genético;
Whole-genome sequencing;
MYBPC3;
Variante intrónica

Whole-genome DNA sequencing: a chave para detetar uma mutação sarcomérica numa família com miocardíopatia hipertrófica e «genótipo falsamente negativo»

Resumo Os autores descrevem a investigação clínica e genética de uma família com miocardíopatia hipertrófica (MCH). Os casos descritos incluem três parentes de primeiro grau (pai e dois filhos) e uma sobrinha com MCH e dois sobrinhos sem MCH. Todos os casos afetados apresentavam um fenótipo semelhante, que consistia em MCH assimétrica, com hipertrofia envolvendo o septo e a parede anterior e alterações eletrocardiográficas idênticas, incluindo um intervalo PR curto. O caso 1 (índice) apresentava uma MCH obstrutiva e tinha sido previamente submetido a miectomia e substituição valvular mitral. O caso 2 (filha mais velha) apresentou-se com uma MCH não obstrutiva, sintomas de angina e insuficiência cardíaca (IC) classe II de NYHA; desenvolveu taquicardia ventricular não mantida (TVNM) no seguimento e foi submetida a implantação de CDI, em prevenção primária de morte súbita cardíaca. O caso 3 (filho) apresentou-se com MCH não obstrutiva assintomática, tendo desenvolvido queixas de IC classe II de NYHA durante o seguimento. O caso 4 (sobrinha) apresentou-se com MCH não obstrutiva, predominantemente com sintomas de IC classe II NYHA. A pesquisa de mutações sarcoméricas e fenocópias no caso-índice foi, inicialmente, «negativa». Após oito anos em seguimento clínico e perante a suspeita de um novo gene patogénico/nova mutação partilhada entre todos os parentes, incluímos o caso-índice num projecto *whole-genome sequencing*. Foi diagnosticada uma variante intrónica patogénica, em heterozigotia, do gene MYBPC3 (c.1227-13G>A (rs397515893)), com cossegregação familiar.

© 2020 Sociedade Portuguesa de Cardiologia. Publicado por Elsevier España, S.L.U. Este é um artigo Open Access sob uma licença CC BY-NC-ND (<http://creativecommons.org/licenses/by-nc-nd/4.0/>).

Introduction

Hypertrophic cardiomyopathy (HCM) is a genetic disease of the myocardium transmitted in an autosomal dominant pattern and affecting both genders and all ethnicities,^{1,2} with a prevalence of 1:500-1:200 in the general population.³ Histologically, it is characterized by myofibrillar disarray and fibrosis, resulting in diastolic dysfunction in virtually all cases.⁴ In index cases, the diagnosis is established by a maximum wall thickness (MWT) of ≥ 15 mm by cardiac imaging in the absence of abnormal loading conditions sufficient to explain the hypertrophy.^{5,6} When the patient is a first-degree relative of a diagnosed HCM patient, a threshold of 13 mm is sufficient to establish the diagnosis.⁵ HCM is characterized by a wide clinical spectrum, varying from asymptomatic to heart failure or sudden cardiac death (SCD), which can be the first presentation.^{5,7}

The disease is associated with mutations in 11 or more genes encoding contractile myofilament protein components of the sarcomere or proteins of the adjacent Z-disc.⁸ More than 1400 mutations (largely missense) have been identified, most of which are unique to individual families.⁵ Among genotype-positive patients, 70% have mutations in beta-myosin heavy chain (*MYH7*) and myosin-binding protein C (*MYBPC3*) genes.⁵ Genetic testing confirms the diagnosis and enables close follow-up and monitoring of genotype-positive relatives before they develop hypertrophy.^{5,9,10}

The DNA resequencing methods used for clinical purposes, Sanger sequencing or more recently next-generation sequencing of targeted panels, only screen exons and immediately contiguous exon-intron boundaries. A sarcomeric mutation is found in approximately 40-50% of probands.¹¹

Deeper intronic variants or new undiscovered genes are two possible explanations for this incomplete yield, as we hypothesised in this family, studied by whole-genome sequencing after years of follow-up.

Case report

Case 1 (II-1) (proband)

A 76-year-old man with previous history of hypertension, dyslipidemia, and paroxysmal atrial fibrillation was diagnosed with obstructive HCM at the age of 52 years. He was known to have a brother diagnosed with HCM at the age of 55 years (II-6) and a sister who died suddenly of unknown cause at the age of 49 years (II-5). The family pedigree is shown in [Figure 1](#).

Before follow-up in our clinic, he had undergone myectomy and mitral valve replacement for left ventricular outflow tract (LVOT) obstruction refractory to medical therapy at the age of 60 years. He has been in New York Heart Association (NYHA) class II-III heart failure (HF) ever since, treated with oral anticoagulants, angiotensin-converting enzyme inhibitors, spironolactone and beta-blockers. After four years of uneventful follow-up, he had an embolic stroke. His ECGs showed atrial fibrillation, ST-segment depression and biphasic T-waves in V4-V6, III and aVF ([Figure 2A](#)). The transthoracic echocardiograms showed severe septal hypertrophy (interventricular septum 19 mm, inferolateral wall 13 mm), left ventricular ejection fraction (LVEF) 55%, increased filling pressures (E/e' ratio 31) with no exercise-induced intraventricular gradient, and a normally functioning mechanical mitral valve ([Figure 3A](#)). Some

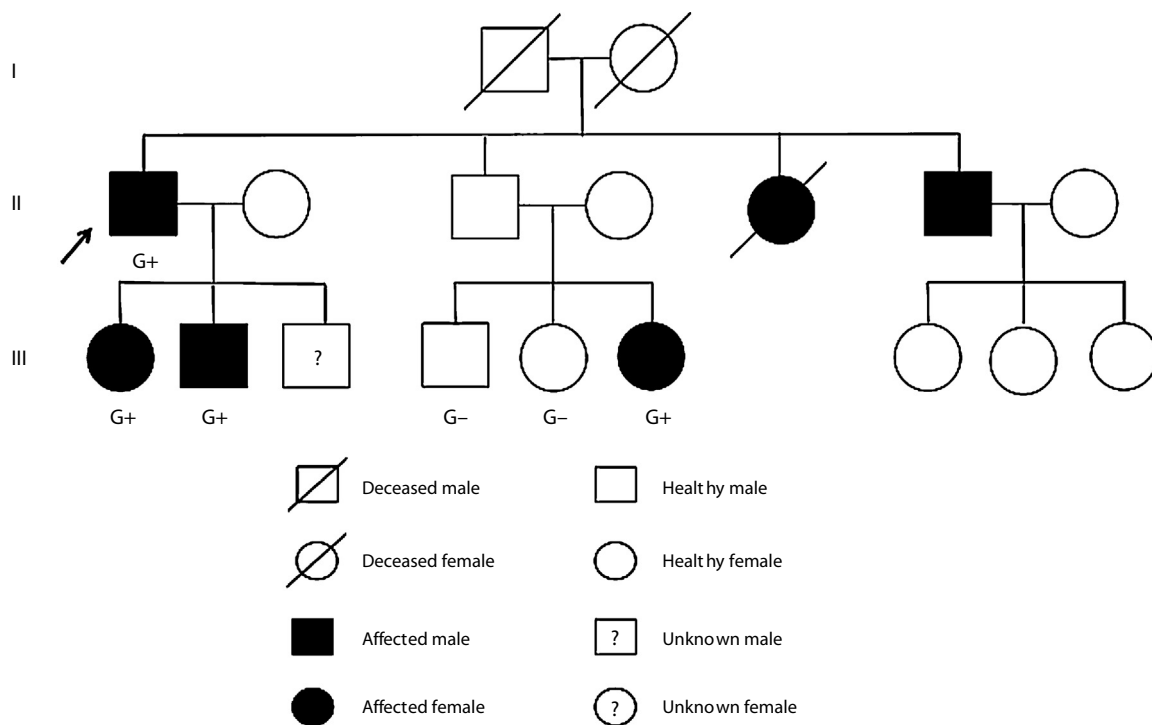


Figure 1 Family pedigree. G+: genotype positive; G-: genotype negative. Arrow: proband.

of the 24-hour Holter recordings during follow-up showed non-sustained ventricular tachycardia (NSVT) as the only American College of Cardiology Foundation/American Heart Association risk factor,¹² and his last estimated European Society of Cardiology SCD risk score^{5,13} was 5.0% at five years. Cardiac magnetic resonance (CMR) showed asymmetric HCM (MWT 24 mm), normal systolic function (LVEF 61%) and focal late gadolinium enhancement (LGE) in the hypertrophied segments (Figure 4A).

The proband underwent clinical genetic testing in 2009, which was reported negative for sarcomeric mutations in *MYH7*, *MYBPC3*, *TNNT2*, *TNNI3*, *MYL2*, *MYL3*, *ACTC1*, *TMP1*, and *CSRP3*, extended three years later to *PRKAG2*, *GLA* and *LAMP2*, also negative. The search for mutations in each of these genes, in an accredited clinical laboratory, was performed for the entirety of the coding region, including exon-intron boundaries (canonical splice sites), using polymerase chain reaction and direct Sanger sequencing. This method has 99% sensitivity in detecting nucleotide substitutions and short insertion-deletions (indels).

In 2017, DNA extracted from the proband's blood was sent to Novogene Corporation for whole-genome sequencing (the rationale for this decision is explained in the discussion). A capture library from New England Biolabs was used for whole-genome amplification and sequencing was carried out on an Illumina HiSeq X Ten platform, with 150 bp paired-end reads and a mean read depth of 50. Reads were pre-processed with Trim Galore version 0.4.4 to remove sequencing adapters and to filter the sequences with a minimum Phred quality score of 20. Most of the reads (~98.8%) were kept for downstream alignment against the hg19 reference genome using Burrows-Wheeler Aligner (BWA) mem version 0.7.15. The Genome Analysis Toolkit version 4.0.1.2 (GATK4) was applied to mark duplicates and to calculate genome coverage. Variant calling was performed

with Strelka2 version 2.8.4 at a mean genome coverage of 40×. After an initial filtering step, 4 862 291 variants (both single-nucleotide polymorphisms and small indels) were obtained. Further analysis revealed a heterozygous intronic variant, c.1227-13G>A (rs397515893), in the *MYBPC3* gene (intron 14), classified as likely pathogenic.

The proband's relatives were then genotyped for this variant by Sanger sequencing. As shown in Figure 1, the variant was present in all four affected members and not present in the three non-affected members who were tested.

Case 2 (III-1)

The proband's oldest daughter (Figure 1) was referred for clinical screening at the age of 38 years. At that time, she was in NYHA class II and had had previous episodes of exertional angina. The physical examination revealed a harsh systolic murmur at the lower left sternal border. The ECG showed sinus rhythm, short PR interval, T-wave inversion in DIII, flat T wave in aVF and biphasic T wave in DII and V4-V6 (Figure 2B). The transthoracic echocardiogram confirmed the diagnosis, showing asymmetric HCM involving the septum and anterior wall (MWT 22 mm), with no systolic anterior motion (SAM) of the mitral valve or intraventricular gradient at rest or with Valsalva maneuver or exercise (Figure 3B). As well as confirming the echocardiographic findings, CMR revealed mid-cavity obliteration and LGE matching the hypertrophic segments and the left ventricular-right ventricular (LV-RV) hinge points (Figure 4B). She was started on a beta-blocker. At that time, she had no risk factors for sudden cardiac death. Two years later she developed short episodes of palpitations and 24-hour Holter monitoring showed non-sustained ventricular tachycardia. She had an estimated SCD risk of 5.9% at five

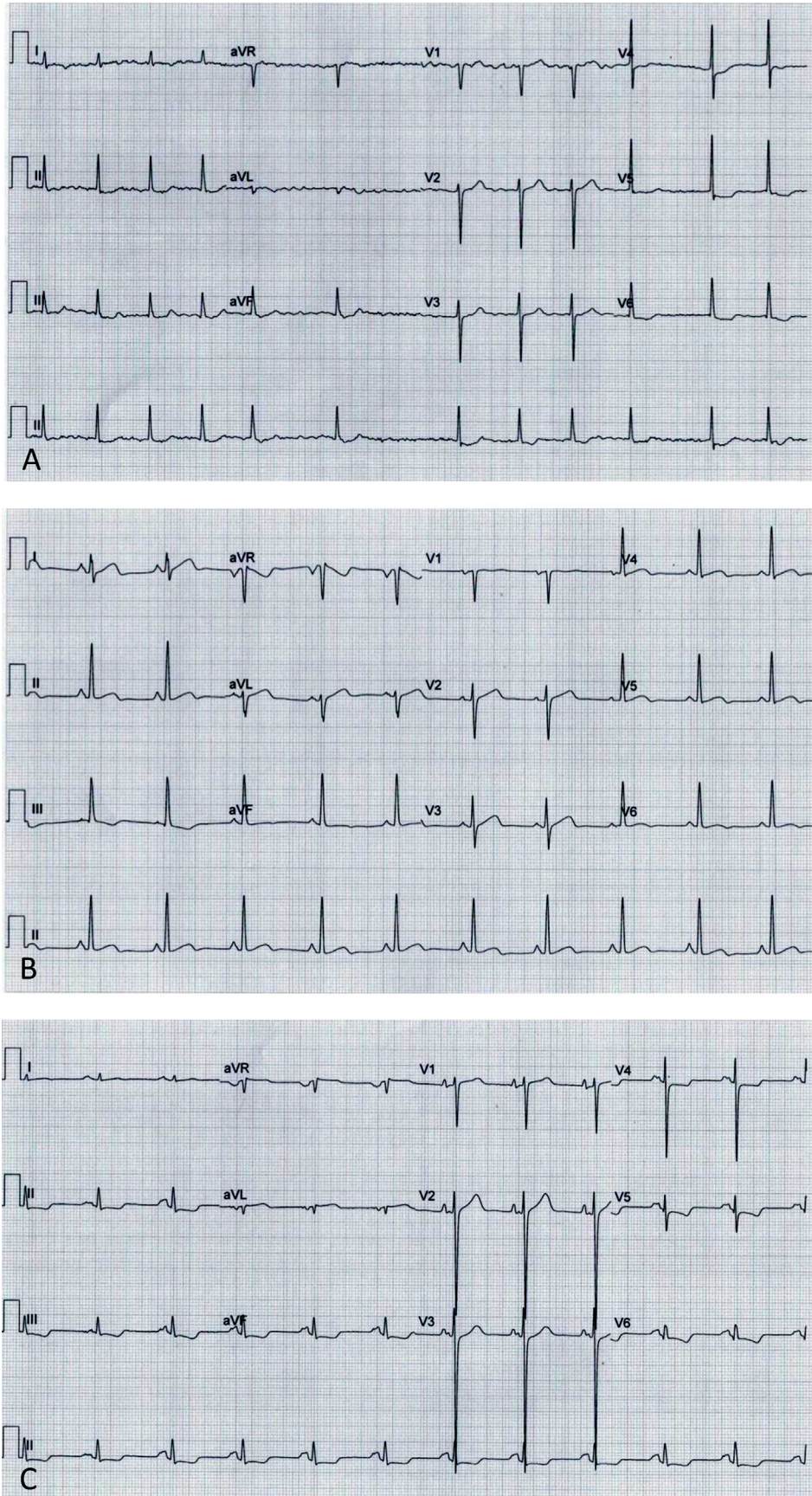


Figure 2 Electrocardiograms: (A, Case 1): atrial fibrillation, ST-segment depression and biphasic T-waves in V4-V6, III and aVF; (B, Case 2): sinus rhythm, short PR interval, T-wave inversion in III, flat T-wave in aVF, biphasic T-wave in II, V4-V6; (C, Case 3): sinus rhythm, short PR interval, electrocardiographic criteria for left ventricular hypertrophy, ST-segment depression and T-wave inversion in V4-V6, II, III and aVF.

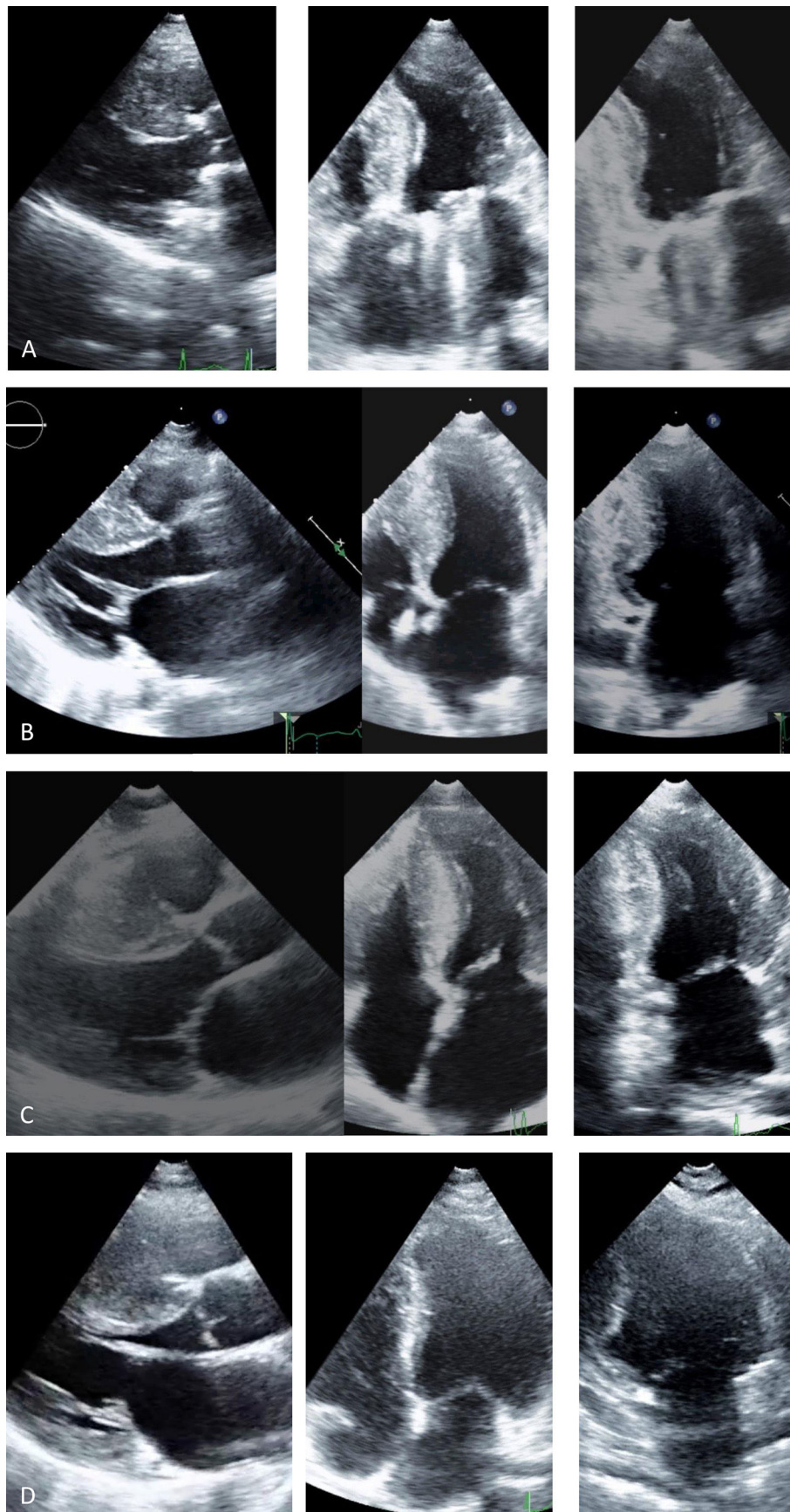


Figure 3 Transthoracic echocardiogram, parasternal long-axis, 4-chamber and 2-chamber views: (A, Case 1): asymmetric hypertrophic cardiomyopathy (HCM) (maximum wall thickness [MWT] 16 mm) and normal prosthetic mitral function; (B, Case 2): asymmetric HCM (MWT 22 mm); (C, Case 3): asymmetric HCM (MWT 21 mm); (D, Case 4): asymmetric HCM (MWT 22 mm).

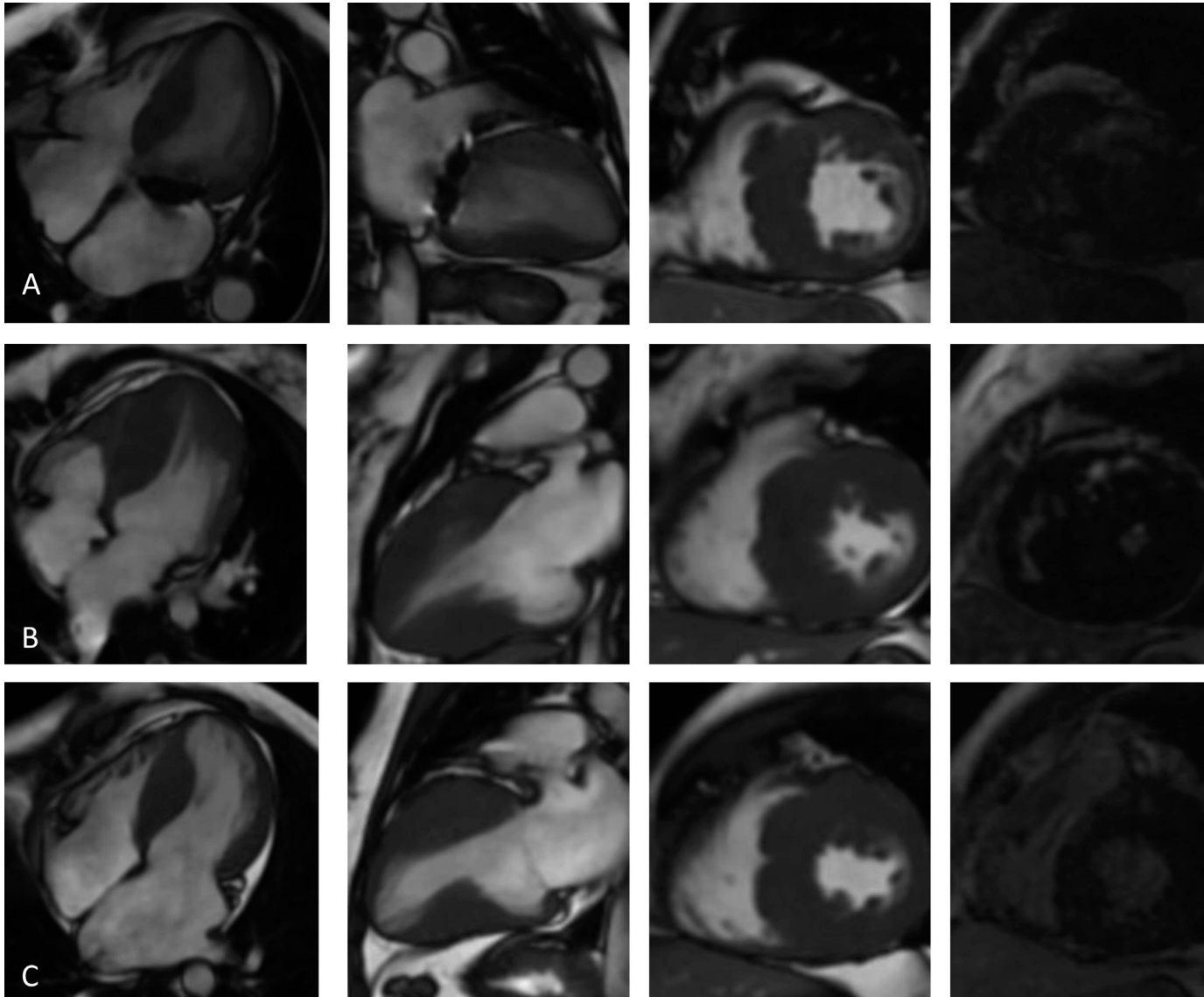


Figure 4 Cardiac magnetic resonance imaging (4-chamber, 2-chamber and short-axis cine and late gadolinium enhancement (LGE) views): (A, Case 1): asymmetric hypertrophic cardiomyopathy (HCM) with late gadolinium enhancement (LGE) in the hypertrophied segments; (B, Case 2): asymmetric HCM with LGE in the hinge points; (C, Case 3): asymmetric HCM with LGE in the hinge points.

years (age: 42 years, MWT: 22 mm, left atrial size: 48 mm, maximum LVOT gradient: 2 mmHg; family history of SCD: no, non-sustained ventricular tachycardia: yes, syncope: no) and received a single-chamber implantable cardioverter-defibrillator (ICD) for primary prevention of SCD. Three years later she was in NYHA class III HF. The transthoracic echocardiogram showed a restrictive diastolic filling pattern (E/e' ratio 18), diminished longitudinal systolic function (septal S' 3 cm/s and lateral S' 6 cm/s; global longitudinal strain -11%) and hypokinesia of the hypertrophic segments despite normal ejection fraction; she also had incomplete SAM but no significant mitral regurgitation. She never developed significant intraventricular gradients during follow-up, including on treadmill exercise echocardiography. Under spironolactone, her functional capacity improved and the next transthoracic echocardiogram also showed an improvement in LV filling pressures (E/e' ratio 9). She has had no malignant arrhythmia since.

Case 3 (III-2)

The proband's middle son (Figure 1) was first studied in the setting of familial screening at 35 years of age. Although he was asymptomatic, his transthoracic echocardiogram confirmed the diagnosis of asymmetric HCM, with hypertrophy particularly involving the septum (MWT 21 mm) and the anterior and inferior walls, mild mitral regurgitation and no other relevant findings (Figure 3C). He underwent treadmill exercise echocardiography, which showed no exercise-induced obstruction. The baseline ECG was unremarkable except for evidence of left atrial abnormality. The 24-hour Holter ECG findings were also unremarkable. CMR showed asymmetric HCM (MWT 24 mm), with normal systolic function (LVEF 75%) and focal LGE in the LV-RV hinge points (Figure 4C). After two years, he developed NYHA class II HF symptoms and exercise-induced dizziness. The ECG at that time showed sinus rhythm, short PR interval, slow R-wave progression in the precordial leads and T-wave inversion in the inferior and lateral leads. The transthoracic echocardiogram revealed increased LV filling pressures (mean E/e' ratio 16). He was started on spironolactone and remained in NYHA class II HF. Three years later, although clinically stable, he developed electrocardiographic criteria for left ventricular hypertrophy (LVH), as well as a short-PR interval, deep S waves in the right precordial leads, ST-segment depression and T-wave inversion in V4-V6 and the inferior leads (Figure 2C). The transthoracic echocardiogram was similar to the previous one. During follow-up, 24-hour Holter monitoring showed no relevant arrhythmia and the echocardiogram revealed no significant intraventricular obstruction, including on treadmill stress testing. His estimated SCD at last clinical follow-up was 3.1% at five years (age: 39 years, MWT: 25 mm, left atrial size: 50 mm, maximum LVOT gradient: 2 mmHg; family history of SCD: no, non-sustained ventricular tachycardia: no, syncope: no).

Case 4 (III-6)

This niece of the proband (Figure 1) was mostly followed in another center abroad. She was diagnosed with HCM at the age of 24 and at early presentation she was in NYHA

class II HF. At that time, 24-hour Holter monitoring showed no NSVT. She was referred to our clinic during her second pregnancy (11 years after diagnosis). The ECG showed sinus rhythm, short PR interval, electrocardiographic criteria for LVH, QS complexes in DIII and aVF and T-wave inversion in V2-V5. Her transthoracic echocardiogram (38th week of pregnancy) showed asymmetric HCM affecting the septum (MWT 22 mm), SAM of the mitral valve but no significant gradient, normal systolic function and increased filling pressures (E/e' ratio 21) (Figure 3D). The transthoracic echocardiogram showed normal filling pressures after delivery (E/e' ratio 6).

Cases 5 and 6 (III-4 and III-5)

Cases 5 and 6 were niece and nephew of the proband (Figure 1), enrolled in the clinical screening. Their electrocardiograms and echocardiograms showed no signs of HCM.

Discussion

We describe a family with HCM considered genotype-negative for eight years of follow-up. The availability of whole-genome sequencing proved to be crucial to obtaining a genetic diagnosis of a pathogenic intronic (splice-site) variant.

The phenotype in this family was relatively homogeneous, with asymmetric HCM, mainly HF symptoms and short PR interval in three of the family members (the proband presented with atrial fibrillation and no previous ECG was available to assess his PR interval). Disease progression was characterized by worsening HF and increased filling pressures. However, the initial screening for sarcomeric mutations was negative, and so the genetic cause could not be found. We first thought this could be due to the presence of a phenocopy. The evidence of a red flag (short PR interval) in three affected relatives increased this suspicion.¹⁴ Short PR interval can occur in Anderson-Fabry disease (AFD), Danon disease and PRKAG2 cardiomyopathy. The latter is a rare autosomal dominant disease characterized by heart-specific non-lysosomal glycogenosis, usually diagnosed in late adolescence and characterized by an HCM-like phenotype and evidence of short PR interval and/or pre-excitation, frequently progressing to high-grade conduction system disease.¹⁵ The presence of male-to-male transmission excluded the possibility of Danon disease or AFD. However, the proband's son's phenotype status was not known when we initially started following his father, and genetic testing was therefore extended to include these three phenocopies; again, no causal mutation was found.

The main sarcomeric and sarcomere-associated genes and phenocopies had been tested in the proband and these are still the most robustly established causal genes in HCM.^{16,17} There have recently been increasingly frequent reports that expansion of gene panels to include further cardiomyopathy candidate genes has a nearly negligible effect on testing yield, while generating a higher number of variants of unknown significance and of challenging interpretation.¹⁸⁻²¹ As such, given a relatively phenotypically homogeneous familial HCM with an undiscovered mutation shared between the four affected cases and with affected and non-affected relatives available to test, we

hypothesised that the use of whole-exome sequencing (WES) or whole-genome sequencing (WGS) could lead to the discovery of a new causal gene. Conventional genetic testing only screens exons and immediate intron-exon boundaries, while variants located further within intronic regions tend to be missed.¹⁶ However, recent studies have shown that mutations in intronic regions may play a role in HCM patients.^{22,23} One of these studies²² reported four likely pathogenic deep-intronic variants in *MYBPC3* in a small cohort of 58 probands, and we recently published a preliminary quantitative analysis of non-coding variants which suggested that deep-intronic variation contributes to the HCM phenotype.²² Indeed, the presence of a previously undetected pathogenic non-coding variant could have explained the sarcomeric-negative status of this family. Furthermore, the use of next-generation sequencing – WES or WGS – could additionally enable a search for large indels and copy-number variants, through the use of well-established read-depth methods.²⁴

For these reasons, we opted to include this family in a whole-genome sequencing research project, starting with the index case.

Whole-genome sequencing in the proband revealed a heterozygous intronic (splice-site) *MYBPC3* variant considered very likely pathogenic (c.1227-13G>A [rs397515893]). This mutation had previously been described in HCM, as documented in the ClinVar database.²⁵ This sequence change falls in intron 14 of the *MYBPC3* mRNA. It does not directly change the encoded amino acid sequence of cardiac myosin-binding protein C, but causes a splicing defect that results in a frameshift and is predicted to result in a premature stop codon leading to an absent or truncated protein (PMID: 12110947). We have confirmed cosegregation in the family.

Conclusion

Whole-genome sequencing is still not clinically available or indicated for the majority of HCM patients. However, its role in cases of clearly familial HCM for which genetic testing was negative is beginning to be recognized. In the case presented, it enabled the diagnosis of a causal intronic (splice-site) variant shared by the affected family members and previously described as likely pathogenic.

Funding

This work was supported by projects funded by the European Regional Development Fund (FEDER) through POR Lisboa 2020 - Programa Operacional Regional de Lisboa PORTUGAL 2020, and Fundação para a Ciência e a Tecnologia (LISBOA-01-0247-FEDER-024136, and PAC-PRECISE-LISBOA-01-0145-FEDER-016394).

Conflicts of interest

The authors have no conflicts of interest to declare.

References

- McKenna WJ, Maron BJ, Thiene G. Classification epidemiology, and global burden of cardiomyopathies. *Circ Res*. 2017;121:722–30.
- Maron BJ, Maron MS. Hypertrophic cardiomyopathy. *Lancet*. 2013;381:242–55.
- Semsarian C, Ingles J, Maron MS, et al. New perspectives on the prevalence of hypertrophic cardiomyopathy. *J Am Coll Cardiol*. 2015;65:1249–54.
- Hughes SE. The pathology of hypertrophic cardiomyopathy. *Histopathology*. 2004;44:412–27.
- Elliott PM, Anastakis A, Borger MA, et al. 2014 ESC Guidelines on diagnosis and management of hypertrophic cardiomyopathy: the Task Force for the Diagnosis and Management of Hypertrophic Cardiomyopathy of the European Society of Cardiology (ESC). *Eur Heart J*. 2014;35:2733–79.
- Hindieh W, Chan R, Rakowski H. Complementary role of echocardiography and cardiac magnetic resonance in hypertrophic cardiomyopathy. *Curr Cardiol Rep*. 2017;19, <http://dx.doi.org/10.1007/s11886-017-0897-z>.
- Maron BJ, Rowin EJ, Udelson JE, et al. Clinical spectrum and management of heart failure in hypertrophic cardiomyopathy. *JACC Heart Fail*. 2018;6:353–63.
- McNally EM, Barefield DY, Centertip M. The genetic landscape of cardiomyopathy and its role in heart failure. 2016;21:174–82.
- Charron P, Arad M, Arbustini E, et al. European Society of Cardiology Working Group on Myocardial and Pericardial Diseases Genetic counselling and testing in cardiomyopathies: a position statement of the European Society of Cardiology Working Group on Myocardial and Pericardial Diseases. *Eur Heart J*. 2010;31:2715–28.
- Ingles J, Bagnall RD, Semsarian C. Genetic testing for cardiomyopathies in clinical practice. *Heart Fail Clin*. 2018;14:129–37.
- Ho CY. Genetics and clinical destiny: improving care in hypertrophic cardiomyopathy. *Circulation*. 2010;6:2430–40.
- Gersh BJ, Maron BJ, Bonow RO, et al. 2011 ACCF/AHA guideline for the diagnosis and treatment of hypertrophic cardiomyopathy: a report of the American College of Cardiology Foundation/American Heart Association Task Force on Practice Guidelines Developed in Collaboration with the American Association for Thoracic Surgery, American Society of Echocardiography, American Society of Nuclear Cardiology, Heart Failure Society of America, Heart Rhythm Society, Society for Cardiovascular Angiography and Interventions, and Society of Thoracic Surgeons. *J Am Coll Cardiol*. 2011;58:e212–60.
- O'Mahony C, Jichi F, Pavlou M, et al. Hypertrophic Cardiomyopathy Outcomes Investigators. A novel clinical risk prediction model for sudden cardiac death in hypertrophic cardiomyopathy (HCM Risk-SCD). *Eur Heart J*. 2014;35:2010–20.
- Rapezzi C, Arbustini E, Caforio ALP, et al. Diagnostic work-up in cardiomyopathies: bridging the gap between clinical phenotypes and final diagnosis. A position statement from the ESC Working Group on Myocardial and Pericardial Diseases. *Eur Heart J*. 2013;34:1448–58.
- Porto AG, Brun F, Severini GM, et al. Clinical spectrum of PRKAG2 syndrome. *Circ Arrhythm Electrophysiol*. 2016;9:e003121.
- Ingles J, Goldstein J, Thaxton C, et al. Evaluating the clinical validity of hypertrophic cardiomyopathy genes. *Circ Genom Precis Med*. 2019;12:e002460.
- Walsh R, Buchan R, Wilk A, et al. Defining the genetic architecture of hypertrophic cardiomyopathy: re-evaluating the role of non-sarcomeric genes. *Eur Heart J*. 2017;38:3461–8.
- Mazzarotto F, Girolami F, Boschi B, et al. Defining the diagnostic effectiveness of genes for inclusion in panels: the experience of two decades of genetic testing for hypertrophic cardiomyopathy at a single center. *Genet Med*. 2019;21:284–92.
- Thomson KL, Ormondroyd E, Harper AR, et al. Analysis of 51 proposed hypertrophic cardiomyopathy genes from genome sequencing data in sarcomeric negative cases has negligible diagnostic yield. *Genet Med*. 2019;21:1576–84.

20. Mademont-Soler I, Mates J, Yotti R, et al. Additional value of screening for minor genes and copy number variants in hypertrophic cardiomyopathy. *PLoS One*. 2017;12:e0181465.
21. Cirino AL, Lakdawala NK, McDonough B, et al. MedSeq project. A comparison of whole genome sequencing to multi-gene panel testing in hypertrophic cardiomyopathy patients. *Circ Cardiovasc Genet*. 2017;10, <http://dx.doi.org/10.1161/CIRCGENETICS.117.001768>, pii:e001768.
22. Mendes De Almeida R, Tavares J, Martins S, et al. Whole gene sequencing identifies deep-intronic variants with potential functional impact in patients with hypertrophic cardiomyopathy. *PLoS One*. 2017;12:1–19.
23. Bagnall RD, Ingles J, Dinger ME, et al. Whole-genome sequencing improves outcomes of genetic testing in patients with hypertrophic cardiomyopathy. *J Am Coll Cardiol*. 2018;72:419–29.
24. Lopes LR, Murphy C, Syrris P, et al. Use of high-throughput targeted exome-sequencing to screen for copy number variation in hypertrophic cardiomyopathy. *Eur J Med Genet*. 2015;58:611–6.
25. National Center for Biotechnology Information. ClinVar [VCV000042513.3]. <https://www.ncbi.nlm.nih.gov/clinvar/variation/VCV000042513.3>.