



ORIGINAL ARTICLE

Cardiac allograft vasculopathy: Incidence and predictors in a single-center cohort



Sofia Picão*, Manuel Oliveira-Santos, Manuel Batista, David Prieto, Manuel J. Antunes, Mariano Pego, Vítor Matos, Lino Gonçalves, Elisabete Jorge

Centro Hospitalar da Universidade de Coimbra, Coimbra, Portugal

Received 29 January 2019; accepted 27 October 2019
Available online 26 May 2020

KEYWORDS

Cardiac transplantation;
Allograft;
Vasculopathy;
Ischemic heart disease;
Carotid artery disease;
Incidence

Abstract

Introduction and Aims: Cardiac allograft vasculopathy (CAV) is one of the most significant complications after orthotopic heart transplantation. We aimed to investigate the incidence and predictors of CAV in a large cohort of orthotopic heart transplantation patients.

Methods: We conducted a retrospective analysis on a prospective cohort of 233 patients who underwent transplantation between November 2003 and May 2014. Baseline clinical data and invasive coronary angiograms (n=712) performed as part of the follow-up program were analyzed by two independent investigators.

Results: We included 157 male and 45 female patients with a median age of 66 years. A third of patients had previous ischemic heart disease, 30% peripheral arterial disease, 37% hypertension and 47% dyslipidemia, and 17% were smokers. Acute moderate or severe rejection occurred in 42 patients during the first year. Over a median follow-up of 2920 days, 18% were diagnosed with CAV, with an incidence of 2.91 cases per 100 person-years. Predictors of CAV were previous ischemic heart disease (HR 2.32, 95% CI 1.21-4.45, p=0.01), carotid artery disease (HR 2.44, 95% CI 1.27-4.71, p<0.01), and donor age (HR 1.04, 95% CI 1.00-1.07, p=0.01).

Conclusion: In a single-center cohort of orthotopic heart transplantation patients, predictors of CAV were previous ischemic heart disease, carotid artery disease and donor age.

© 2020 Sociedade Portuguesa de Cardiologia. Published by Elsevier España, S.L.U. This is an open access article under the CC BY-NC-ND license (<http://creativecommons.org/licenses/by-nc-nd/4.0/>).

PALAVRAS-CHAVE

Transplante cardíaco;
Enxerto;
Vasculopatia;

Vasculopatia do enxerto: incidência e preditores num estudo de centro único

Resumo

Introdução e objetivos: A vasculopatia do enxerto é uma das complicações mais relevantes após transplante cardíaco. O objetivo deste estudo foi investigar a incidência e os preditores de vasculopatia do enxerto numa população de transplantados cardíacos.

* Corresponding author.

E-mail address: sofia.peusebio@gmail.com (S. Picão).

Doença cardíaca
isquêmica;
Doença carotídea;
Incidência

Métodos: Análise retrospectiva de um coorte prospectivo de 233 transplantados cardíacos no nosso centro entre novembro de 2003 e maio de 2014. As características clínicas basais e as coronariografias invasivas (n=712) realizadas no âmbito do programa de acompanhamento pós-transplante foram analisadas por dois investigadores independentes.

Resultados: Foram incluídos 157 homens e 45 mulheres, com mediana de 66 anos. Um terço tinha doença cardíaca isquêmica prévia, 30% doença arterial periférica, 17% fumadores, 37% hipertensos e 47% tinham dislipidemia. Verificou-se rejeição aguda moderada ou severa em 42 doentes durante o primeiro ano. Durante um período médio de seguimento de 2920 dias, 18% foram diagnosticados com vasculopatia do enxerto, com uma taxa de incidência de 2,91 casos por 100 pessoa-ano. Os preditores de vasculopatia do enxerto foram doença cardíaca isquêmica [HR 2,32, 95% IC 1,21–4,45, p=0,01], doença arterial carotídea prévia [HR 2,44 95% IC 1,27–4,71, p<0,01] e idade do dador [HR 1,04, 95% IC 1,00–1,07, p=0,01].

Conclusão: Numa coorte unicêntrica de transplantados cardíacos, os preditores de vasculopatia do enxerto foram doença cardíaca isquêmica e doença arterial carotídea prévias e idade do dador.

© 2020 Sociedade Portuguesa de Cardiologia. Publicado por Elsevier España, S.L.U. Este é um artigo Open Access sob uma licença CC BY-NC-ND (<http://creativecommons.org/licenses/by-nc-nd/4.0/>).

Introduction

Orthotopic heart transplantation (OHT) remains the treatment of choice for refractory end-stage heart failure.^{1–4} It is reserved for patients with severe hemodynamic compromise, intractable ventricular arrhythmias or uncontrollable angina.⁵

According to data from the 2016 International Society for Heart and Lung Transplantation (ISHLT) registry, one-year and 10-year survival post-OHT exceed 85% and 50%, respectively.⁶ At our center, the equivalent rates are 87% and 79%.⁷ Survival is hampered by several factors, one of which is cardiac allograft vasculopathy (CAV), a common form of chronic rejection and one of the most limiting long-term complications of OHT.⁸

The aims of this study are to investigate the incidence of CAV after OHT at our institution and to identify its predictors.

Methods

Study design

We conducted a retrospective observational analysis on a prospective single-center cohort. Patients consented to the use of anonymized data for research purposes at the time of OHT.

Patients

A total of 233 consecutive patients who underwent a first OHT at our center between November 2003 and May 2014 were identified. Recipients aged under 18 years (n=3) and those who died less than a year after OHT (n=28) were excluded. Pre-OHT baseline clinical data of recipients and

donors were collected prospectively from a dedicated institutional database integrated in the national OHT registry and analyzed retrospectively. The following data were extracted for all recipients: age, gender, body mass index (BMI), hypertension, previous peripheral arterial disease, ischemic heart disease (IHD), smoking, diabetes, dyslipidemia, abnormal carotid ultrasound, positivity for cytomegalovirus (CMV) immunoglobulin G, and moderate or severe acute rejection ($\geq 2R$ on the ISHLT criteria) during the first year post-OHT. Of donors' pre-transplantation baseline characteristics, age, gender and BMI were analyzed.

Invasive coronary angiography

Invasive coronary angiography (ICA) data from April 2017 to October 2017 were extracted from two databases of the cardiology department. Patients underwent routine ICA at one, three, five, eight, 10 and 12 years after OHT and additional exams if clinically justified. A total of 712 ICAs were analyzed. The films were reviewed by two interventional cardiologists from our department (E.J. and V.M.). Finally, a total of 143 reports described coronary lesions. The reports were classified according to the ISHLT nomenclature⁹ presented in [Table 1](#).

Statistical analysis

Categorical variables were presented as frequency and percentage, and comparisons were performed using the chi-square test or Fisher's exact test. All continuous variables had a non-normal distribution, so they were presented as median (interquartile range), and comparisons between groups were performed with the Kruskal-Wallis test. To identify CAV predictors, patients were categorized as those with (CAV+) and those without CAV (CAV-). Univariate analyses were performed using the Cox proportional hazards model.

Table 1 International Society for Heart and Lung Transplantation nomenclature for cardiac allograft vasculopathy.⁹

ISHLT CAV0 (not significant)	No detectable angiographic lesion
ISHLT CAV1 (mild)	Angiographic LM <50%, or primary vessel with maximum lesion of <70%, or any branch stenosis <70% (including diffuse narrowing) without allograft dysfunction
ISHLT CAV2 (moderate)	Angiographic LM <50%; a single primary vessel \geq 70%, or isolated branch stenosis \geq 70% in branches of two systems, without allograft dysfunction
ISHLT CAV3 (severe)	Angiographic LM \geq 50%, or two or more primary vessels \geq 70% stenosis, or isolated branch stenosis \geq 70% in all 3 systems; or ISHLT CAV1 or CAV2 with allograft dysfunction (defined as LVEF <45% usually in the presence of regional wall motion abnormalities) or evidence of significant restrictive physiology

CAV: cardiac allograft vasculopathy; ISHLT: International Society for Heart and Lung Transplantation; LM: left main coronary artery; LVEF: left ventricular ejection fraction.

Table 2 Baseline characteristics of the study population before orthotopic heart transplantation.

Recipients	
Age, years	66.0 (57.0-71.0)
Male gender, %	157 (77.7)
BMI, kg/m ²	24.69 (23.37-26.46)
Hypertension, n (%)	74 (36.8)
Diabetes, n (%)	48 (26.8)
Previous vascular disease, n (%)	61 (30.3)
Previous IHD, n (%)	72 (35.6)
Smoking, n (%)	35 (17.3)
Dyslipidemia, n (%)	94 (46.8)
Abnormal carotid ultrasound, n (%)	80 (39.6)
Positive for CMV IgG, n (%)	147 (80.3)
Acute rejection \geq 2R in 1st year, n (%)	42 (21.3)
Donors	
Age, years	35.0 (24.0-43.0)
Age \geq 50 years, n (%)	20 (9.9)
Male gender, n (%)	154 (76.2)
BMI, kg/m ²	24.11 (21.91-27.00)

2R: moderate or severe; BMI: body mass index; CVM: cytomegalovirus infection; IgG: immunoglobulin G; IHD: ischemic heart disease.

The follow-up period for each patient was calculated from the date of OHT to the date of last contact. A p-value of less than 0.05 was considered statistically significant. Data were analyzed using the IBM SPSS version 23.0 and STATA 14.0 statistical packages.

Results

Baseline characteristics

The recipient group included 157 males and 45 females, with a median age of 66 (57-71) years; 62 recipients were older than 70 years. Median BMI was 24.7 (23.4-26.5) kg/m². The baseline pre-OHT characteristics are represented in Table 2. The donor group was composed of 154 males and 48 females. Median age was 35 (24-43) years and 20 (10%) donors were over 50 years old. Median BMI was 24.1 (21.9-27.0) kg/m².

Follow-up

Over a median follow-up of 2920 (1825-3650) days after OHT, 37 patients (18.3%) were diagnosed with CAV. After one, three and five years, 3.3%, 5.1% and 9.7% of patients, respectively, had angiographic findings compatible with CAV (Figure 1). The prevalence increased over the rest of the follow-up period: at eight, 10 and 12 years after transplantation, 17.6%, 15.9% and 20.0% of patients, respectively, presented CAV lesions, as shown in Figure 1. The overall CAV incidence was 2.91 cases per 100 person-years.

Regarding lesion type, 14 had CAV1 (38%), 12 had CAV2 (35%) and nine had CAV3 lesions (24%). During the follow-up period, six (16%) patients showed disease progression: four

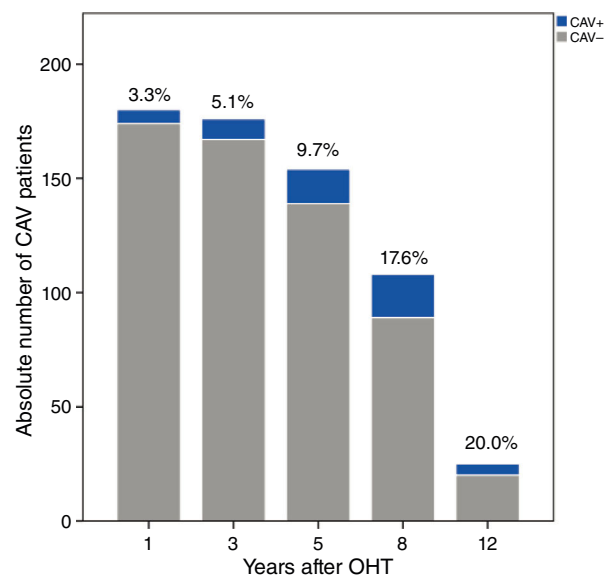


Figure 1 Absolute numbers and percentages of patients with cardiac allograft vasculopathy (CAV) in each follow-up year after orthotopic heart transplantation (OHT). CAV+: patients with cardiac allograft vasculopathy; CAV-: patients without cardiac allograft vasculopathy.

patients first classified with CAV1 showed progression to CAV2, and two CAV2 patients progressed to CAV3. The other patients presented a stable CAV course during follow-up. Percutaneous coronary intervention (PCI) was performed in 18 (49%) patients in the CAV+ group, in lesions classified as CAV2 and CAV3 (only focal stenosis or critical subocclusive lesions amenable to PCI). Seventeen drug-eluting stents

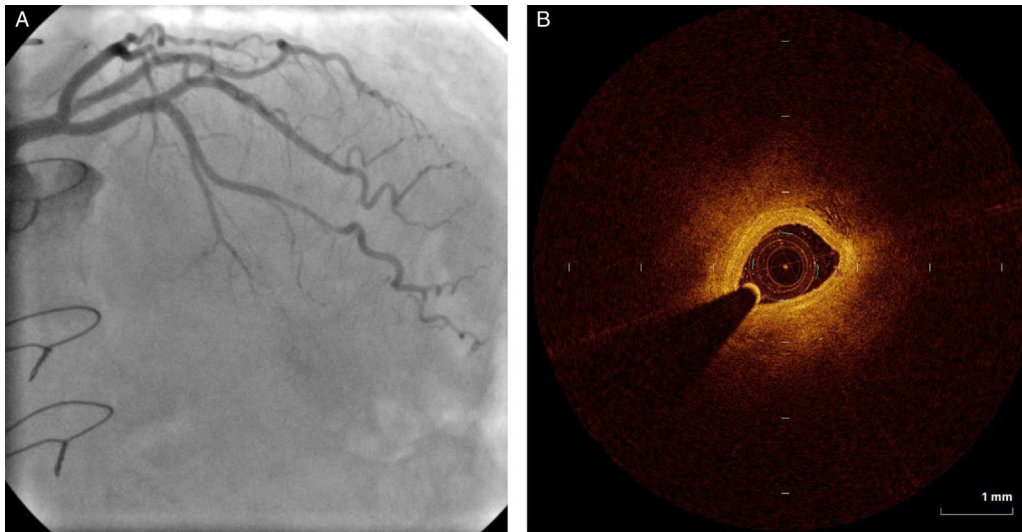


Figure 2 (A) Coronary angiography showing intermediate stenosis in the mid segment of the left anterior descending artery; (B) optical coherence tomography showing intimal thickening (minimum luminal area 0.98 mm²).

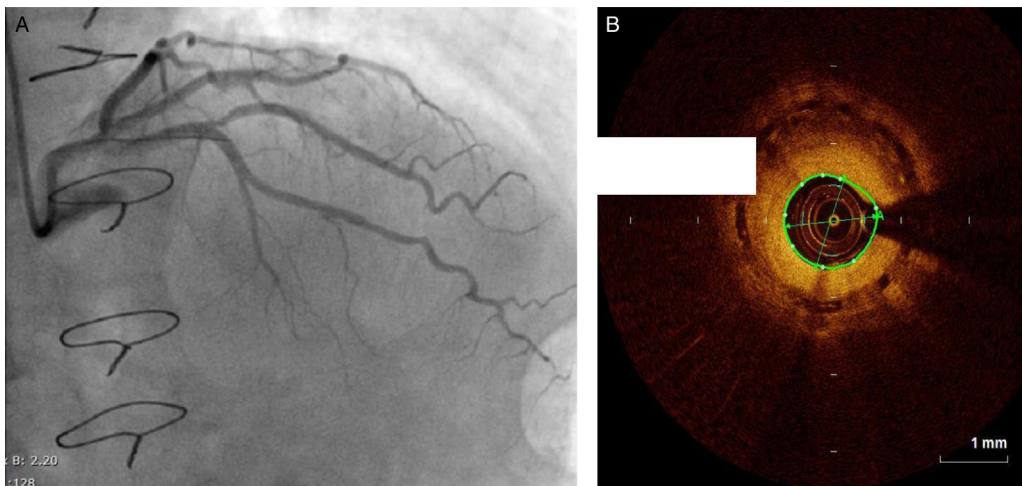


Figure 3 (A) Coronary angiography showing severe in-stent restenosis in the mid segment of the left anterior descending artery; (B) optical coherence tomography showing focal in-stent restenosis (minimum luminal area 1.26 mm²).

(DES) with everolimus, sirolimus or zotarolimus, and one bioresorbable vascular scaffold (BVS), were implanted in 10 of these patients. The patient treated with BVS presented with restenosis ten months later, as illustrated in [Figures 1-3](#), highlighting the safety issues related to these devices, which are no longer in use ([Figure 4](#)).

Predictors of cardiac allograft vasculopathy

Seven (35%) patients with donors over 50 years were CAV+. Of those whose donors were younger than 50 years, 30 (16.5%) patients were CAV+ ([Figure 5](#)).

A comparison of pre-OHT baseline characteristics of the CAV+ and CAV- groups is provided in [Table 3](#). In univariate analysis, abnormal carotid ultrasound (hazard ratio [HR] 2.44, 95% confidence interval [CI] 1.27-4.71, $p < 0.01$), a history of IHD (HR 2.32, 95% CI 1.21-4.45, $p = 0.01$) and donor age (HR 1.04, 95% CI 1.00-1.07, $p = 0.01$) were significantly

associated with higher CAV prevalence ([Table 4](#)). However, recipient risk factors such as hypertension (HR 1.47, 95% CI 0.75-2.86, $p = 0.26$), diabetes (HR 1.59, 95% CI 0.79-3.25, $p = 0.20$), dyslipidemia (HR 1.68, 95% CI 0.87-3.25, $p = 0.13$) and smoking (HR 1.77, 95% CI 0.85-3.65, $p = 0.13$) were not significantly associated with CAV. Multivariate analysis was not performed because of strong covariance between previous IHD and abnormal carotid ultrasound at the time of OHT ($p = 0.000$).

Discussion

CAV is defined as an accelerated fibroproliferative disease that affects epicardial and intramural arteries in OHT patients.¹⁰ It results in progressive luminal narrowing and reduced myocardial blood flow.¹¹ CAV appears to develop first in distal vessels and to progress centripetally to the large coronary vessels,^{10,12} in contrast to the focal,

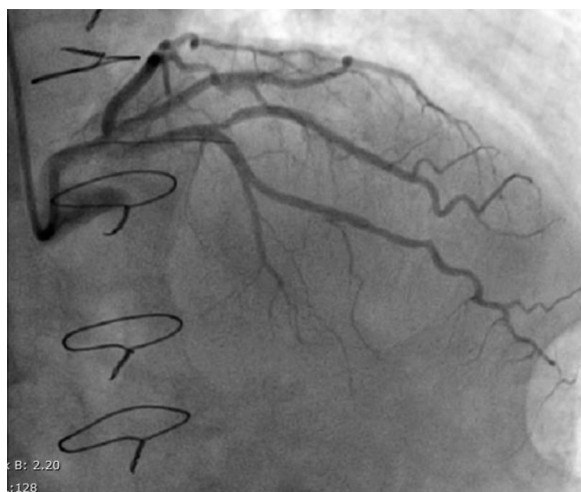


Figure 4 Coronary angiography showing the left anterior descending artery after paclitaxel-coated balloon angioplasty.

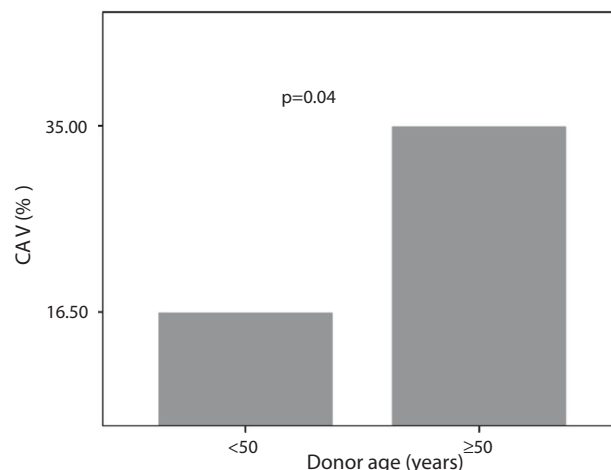


Figure 5 Prevalence of cardiac allograft vasculopathy according to donor age.

eccentric, proximal epicardial lesions in classical atherosclerotic coronary artery disease. However, the two conditions appear to share common pathogenic factors.¹⁰

CAV results from an interaction between numerous immunologic and non-immunologic donor and recipient features that are still not well understood.¹³⁻¹⁵ Among donor features, a history of hypertension, diabetes, smoking, higher BMI, older age and male gender are under study as likely predictors of CAV.^{4,15-17} On the side of the recipient, previous IHD, higher BMI, dyslipidemia, hypertension, diabetes and high urinary uric acid levels have been recognized as possible pre-OHT features predicting CAV.^{4,18} Also, recipient CMV infection is known to be associated with CAV, because it generates a proatherogenic environment

and impairs nitric oxide production, leading to immune-mediated endothelial injury.^{10,15}

Patients with CAV are usually asymptomatic because of allograft denervation, and so ICA is the standard diagnostic technique.¹⁰ However, its sensitivity is limited by the diffuse nature of CAV, especially during the first year post-OHT.^{10,11} Intracoronary imaging techniques such as intravascular ultrasound (IVUS) and optical coherence tomography (OCT) are therefore of growing importance in the diagnosis of CAV.^{10,19-21}

CAV therapy focuses on modification of underlying classical cardiovascular risk factors and optimization of immunosuppression.¹¹

Statins are recommended early after OHT, regardless of cholesterol levels.²² They slow CAV progression and improve

Table 3 Baseline characteristics before transplantation of patients with and without cardiac allograft vasculopathy.

	CAV+ group (n=37, 18.3%)	CAV- group (n=165, 81.7%)
Recipients		
Age, years	65.0 (57.0-71.0)	67.0 (57.0-72.0)
Male gender, %	31 (83.8)	126 (76.4)
BMI, kg/m ²	23.53 (21.81-25.99)	23.60 (21.50-25.51)
Hypertension, n (%)	14 (37.8)	60 (36.6)
Diabetes, n (%)	12 (36.4)	36 (24.7)
Previous vascular disease, n (%)	13 (35.1)	48 (29.3)
Previous IHD, n (%)	14 (48.6)	54 (32.7)
Smoking, n (%)	18 (48.6)	76 (46.3)
Dyslipidemia, n (%)	10 (27.0)	25 (15.2)
Abnormal carotid ultrasound, n (%)	19 (51.4)	61 (37.0)
Positive for CMV IgG, n (%)	29 (85.3)	118 (79.2)
Acute rejection ≥2R in 1st year, n (%)	10 (27.8)	32 (19.2)
Donors		
Age, years	37 (25-46)	34 (24-42)
Age ≥50 years, n (%)	7 (35.0)	13 (65.0)
Male gender, n (%)	32 (86.5)	122 (73.9)
BMI, kg/m ²	24.38 (23.15-27.10)	24.91 (23.44-26.31)

2R: moderate or severe; BMI: body mass index, CAV+: with cardiac allograft vasculopathy; CAV-: without cardiac allograft vasculopathy; CI: confidence interval, CVM: cytomegalovirus infection; HR: hazard ratio, IgG: immunoglobulin G; IHD: ischemic heart disease.

Table 4 Univariate analysis for predictors of cardiac allograft vasculopathy before heart transplantation (Cox regression).

	HR (95% CI)	p
<i>Recipients</i>		
Age	0.99 (0.97-1.02)	0.62
Male gender	1.78 (0.75-4.27)	0.20
BMI	0.99 (0.94-1.05)	0.84
Hypertension	1.47 (0.75-2.86)	0.26
Diabetes	1.59 (0.79-3.25)	0.20
Previous vascular disease	1.54 (0.78-3.02)	0.21
Previous IHD	2.32 (1.21-4.45)	0.01
Smoking	1.77 (0.85-3.65)	0.13
Dyslipidemia	1.68 (0.87-3.25)	0.13
Abnormal carotid ultrasound	2.44 (1.27-4.71)	<0.01
Positive for CMV IgG	0.93 (0.36-2.43)	0.93
Acute rejection \geq 2R in 1st year	1.40 (0.68-2.91)	0.36
<i>Donors</i>		
Age	1.04 (1.00-1.07)	0.01
Male gender	2.14 (0.83-5.52)	0.12
BMI	1.01 (0.90-1.12)	0.88

2R: moderate or severe; BMI: body mass index, CI: confidence interval, CVM: cytomegalovirus infection; HR: hazard ratio, IgG: immunoglobulin G; IHD: ischemic heart disease.

endothelial dysfunction, as shown by landmark trials in the mid-1990s.^{11,23}

Once a patient is diagnosed with CAV, sirolimus or its derivative everolimus is included in the immunosuppressive regimen.^{24,25}

PCI is an option for patients with focal disease who present symptoms or evidence of ischemia.²⁶ Coronary artery bypass grafting is rarely indicated due to the distal and diffuse nature of CAV lesions.²² Replantation is the only definitive treatment capable of improving survival in highly selected candidates.^{14,22}

In our large OHT cohort, the incidence of CAV was 2.91 cases per 100 person-years, and its prevalence was 3.3%, 9.7% and 17.6% at one, five, and eight years post-OHT, respectively. CAV was in most cases grade 1 (38%) or 2 (35%).

According to the 2015 ISHLT report, the five- and eight-year prevalence of CAV is 29% and 40%, respectively.²⁷ A single-center retrospective study, based on a prospective cohort, enrolling 495 OHT patients and using ICA for CAV diagnosis, showed a CAV prevalence of 47% 12 years after OHT.²⁸ Another study with a similar design but a smaller population (54) using both ICA and IVUS for CAV diagnosis presented a CAV prevalence of 46.2% within 10 years of OHT.²⁹ At our center, the incidence and prevalence were lower than previously reported, possibly because of our larger sample and the high-quality follow-up program in our center. We identified abnormal carotid ultrasound at the time of OHT, prior history of IHD and donor age as being independently associated with CAV.

Using ICA for CAV diagnosis, two single-center retrospective studies enrolling 361 and 113 OHT patients also found previous recipient IHD to be a powerful independent predictor for CAV (6- to 10-fold higher risk).^{16,30} Neither of these studies included abnormal carotid ultrasound at the time of

OHT in their analysis, probably due to differences in pre-OHT assessment protocols. However, considering that IHD and carotid disease share similar predictors and are highly correlated, it would also likely be a predictor in these two cohorts.

Neither immunologic nor non-immunologic donor and recipient factors underlying CAV have been established, however IHD risk factors are thought to play a part in the pathophysiology of CAV.³¹ In our population, none of the classical cardiovascular risk factors demonstrated an association with CAV, as predicted by previous articles from our center.³² However, both IHD and abnormal carotid Doppler at the time of OHT suggest that recipients who presented CAV after OHT had some cardiovascular risk factors at that time. Therefore, even though no single classical cardiovascular factor showed an association with CAV in our cohort, our findings support the existence of a common atherosclerotic basis between CAV and classical coronary artery disease in non-transplanted patients. Both IHD and carotid disease imply persistence of classical cardiovascular risk factors that might be associated with coronary plaque progression after OHT.^{33,34}

Donor age was the other CAV predictor in our cohort. A previous retrospective analysis of 162 OHT patients conducted in our center looking at CAV prevalence also identified donor age as a strong positive predictor, concluding that the 50-year cut-off was significant.³⁵ Other studies have also identified age as a CAV predictor.^{4,28} Importantly, older recipients usually receive the hearts of older donors, both (donor and recipient) with a higher burden of cardiovascular risk factors,³⁵ and additionally, when CAV appears early after OHT, the hypothesis of pre-existing donor disease should be considered.³⁶ Age limits are a controversial topic in OHT, and according to the international guidelines, carefully selected patients older than 70 years may be considered.³ In our study, 62 patients were older than 70 years and interestingly, recipient age was not statistically associated with CAV development.

In view of the immunological process behind CAV, a history of acute cellular rejection assessed by endomyocardial biopsy has been suggested in previous studies of single-center cohorts as a predictor of CAV development.^{29,37} We did not find such an association in our population during the first year post-OHT.

Using ICA for CAV diagnosis is in agreement with recent ISHLT recommendations, but it has limited ability to detect the early stages of CAV.²² Other imaging techniques, including IVUS and OCT,^{20,21} may have greater sensitivity for CAV diagnosis.³⁸ The inclusion of these techniques in follow-up programs could lead to earlier detection of abnormalities after OHT and provide more accurate identification of CAV predictors, although this would significantly increase the program cost and the time taken for each invasive exam.

Revascularization procedures are associated with poor long-term results and are considered palliative due to the diffuse and progressive nature of vascular changes.¹⁵ In the setting of three-vessel disease, for example, PCI is associated with only 27% two-year freedom from cardiac death or graft loss.²⁶ Small single-center experiences suggest higher (90-98%) initial procedural success but a restenosis prevalence of 35-100% for PCI alone and 20-56% for PCI with

stenting during the first year.^{39,40} The higher restenosis rate in CAV compared to IHD is explained by the lymphoproliferative response that characterizes CAV.¹² Nevertheless, in our population, PCI had very good results. DES were chosen for the majority of CAV lesions described in our series. As the treatment of established CAV is disappointing, the primary effort should be directed to early diagnosis and prevention. For this, identifying CAV predictors should be a priority.

Due to the higher incidence of CAV in these subgroups (previous vascular disease and donor age over 50), we are proposing changes to our protocol. Firstly, coronary angiography will be mandatory for donors over the age of 50 years in order to confirm eligibility for heart procurement. Secondly, recipients deemed at higher risk for CAV according to the clinician's judgment (including the above subgroups) will be further studied with OCT at the time of the first routine angiography, in order to improve our diagnostic performance and to adjust immunosuppressive therapy accordingly (including initiating everolimus/sirolimus therapy on top of standard lipid-lowering treatment).

Study limitations

Firstly, due to the retrospective nature of this analysis, the comparison between the CAV- and CAV+ groups may be biased because of possible unidentified confounding factors. However, the populations are relatively similar, with only three variables being statistically different between the groups. Secondly, although we have an active transplant center, our population is relatively small. Larger populations may provide greater statistical power to demonstrate the natural course and predictors of CAV. Also, as a single-center study, its external validity is limited. Thirdly, CAV was diagnosed using ICA, which is limited by its low sensitivity. The results reported here may underestimate CAV prevalence in comparison with other techniques such as IVUS or OCT. However, strict adherence to the ICA protocol with well-defined screening intervals enabled a very low drop-out rate. Lastly, exclusion of patients who died in the early postoperative period resulted in a survival bias, so the data presented in our study cannot be applied to early post-OHT risk.

Conclusion

In this retrospective analysis of a single-center OHT cohort, the incidence of CAV (2.91 cases per 100 patient-years) was lower than that reported in other series. CAV predictors were previous ischemic heart disease, carotid artery disease and donor age.

Conflicts of interest

The authors have no conflicts of interest to declare. All authors take responsibility for all aspects of the reliability and freedom from bias of the data presented and their discussed interpretation.

References

- Leite L, Matos V, Jorge E, et al. Heart transplant coronary artery disease: multimodality approach in percutaneous intervention. *Rev Port Cardiol.* 2016;35:e1–5.
- Saraiva J, Sola E, Prieto D, et al. Diabetes as an outcome predictor after heart transplantation. *Interact Cardiovasc Thorac Surg.* 2011;13:499–504, discussion 504.
- Mehra MR, Canter CE, Hannan MM, et al. The 2016 International Society for Heart Lung Transplantation listing criteria for heart transplantation: a 10-year update. *J Hear Lung Transplant.* 2016;35:1–23.
- Kocik M, Malek I, Janek B, et al. Risk factors for the development of coronary artery disease of a grafted heart as detected very early after orthotopic heart transplantation. *Transpl Int.* 2007;20:666–74.
- Mancini D, Lietz K. Selection of cardiac transplantation candidates in 2010. *Circulation.* 2010;122:173–83.
- Yusen RD, Edwards LB, Dipchand AI, et al. The Registry of the International Society for Heart and Lung Transplantation: Thirty-third Adult Lung and Heart–Lung Transplant Report—2016; Focus Theme: Primary Diagnostic Indications for Transplant. *J Hear Lung Transplant.* 2016;35:1170–84.
- Prieto D, Correia P, Batista M, et al. Uma década de transplantação cardíaca em Coimbra. O valor da experiência. *Rev Port Cardiol.* 2014;33:671–81 [cited 29.03.18].
- Goldfarb SB, Levvey BJ, Cherikh WS, et al. Registry of the International Society for Heart and Lung Transplantation: Twentieth Pediatric Lung and Heart-Lung Transplantation Report—2017; Focus Theme: Allograft Ischemic Time. *J Hear Lung Transplant.* 2017;36:1070–9.
- Mehra MR, Crespo-Leiro MG, Dipchand A, et al. International Society for Heart and Lung Transplantation working formulation of a standardized nomenclature for cardiac allograft vasculopathy-2010. *J Heart Lung Transplant.* 2010;29:717–27.
- Chih S, Chong AY, Mielniczuk LM, et al. Allograft vasculopathy: the Achilles' heel of heart transplantation. *J Am Coll Cardiol.* 2016;68:80–91.
- Raichlin E, Bae JH, Khalpey Z, et al. Conversion to sirolimus as primary immunosuppression attenuates the progression of allograft vasculopathy after cardiac transplantation. *Circulation.* 2007;116:2726–33.
- Zimmer RJ, Lee MS. Transplant coronary artery disease. *JACC Cardiovasc Interv.* 2010;3:367–77.
- Mehra MR. The scourge and enigmatic journey of cardiac allograft vasculopathy. *J Hear Lung Transplant.* 2017;36:1291–3.
- López-Sainz A, Barge-Caballero E, Barge-Caballero G, et al. Late graft failure in heart transplant recipients: incidence, risk factors and clinical outcomes. *Eur J Heart Fail.* 2017;1–10.
- Skoric B, Cikes M, Macek JL, et al. Cardiac allograft vasculopathy: diagnosis, therapy, and prognosis. *Croatian Med J.* 2014;55:562–76.
- Caforio ALP, Tona F, Fortina AB, et al. Immune and nonimmune predictors of cardiac allograft vasculopathy onset and severity: multivariate risk factor analysis and role of immunosuppression. *Am J Transplant.* 2004;4:962–70.
- Shahzad K, Aziz QA, Leva JP, et al. New-onset graft dysfunction after heart transplantation incidence and mechanism-related outcomes. *J Hear Lung Transplant.* 2011;30:194–203.
- António N, Prieto D, Antunes MJ. Uric acid: a prognostic marker not only before but also after heart transplantation. *Eur J Cardio-thoracic Surg.* 2010;38:187–91.
- Pollack A, Nazif T, Mancini D, et al. Detection and imaging of cardiac allograft vasculopathy. *JACC Cardiovasc Imaging.* 2013;6:613–23.

20. Hou J, Lv H, Jia H, et al. OCT assessment of allograft vasculopathy in heart transplant recipients. *JACC Cardiovasc Imaging*. 2012;5:662–3.
21. Tissot C-M, Guendouz S, Mouillet G, et al. Comparison of optical coherence tomography (OCT) and intravascular ultrasound (IVUS) for the early diagnosis of cardiac allograft vasculopathy in heart transplant patients. *J Heart Lung Transplant*. 2013;32:S209.
22. Costanzo MR, Dipchand A, Starling R, et al. The International Society of Heart and Lung Transplantation Guidelines for the care of heart transplant recipients. *J Hear Lung Transplant*. 2010;29:914–56.
23. Tremblay-Gravel M, Racine N, de Denus S, et al. Changes in outcomes of cardiac allograft vasculopathy over 30 years following heart transplantation. *JACC Hear Fail*. 2017;5:891–901.
24. Eisen HJ, Tuzcu EM, Dorent R, et al. Everolimus for the prevention of allograft rejection and vasculopathy in cardiac-transplant recipients. *N Engl J Med*. 2003;349:847–58.
25. Hunt SA, Haddad F. The changing face of heart transplantation. *JAC*. 2008;52:587–98.
26. Benatti RD, Taylor DO. Evolving concepts and treatment strategies for cardiac allograft vasculopathy. *Curr Treat Options Cardiovasc Med*. 2014;16:278.
27. Lund LH, Edwards LB, Kucheryavaya AY, et al. The Registry of the International Society for Heart and Lung Transplantation: Thirty-second Official Adult Heart Transplantation Report—2015; Focus Theme: Early Graft Failure. *J Hear Lung Transplant*. 2015;34:1244–54.
28. Hathout E, Beeson WL, Kuhn M, et al. Cardiac allograft vasculopathy in Dutch heart transplant recipients. *Transpl Int*. 2006;19:184–9.
29. Sato T, Seguchi O, Ishibashi-Ueda H, et al. Risk stratification for cardiac allograft vasculopathy in heart transplant recipients – annual intravascular ultrasound evaluation. *Circ J*. 2016;80:395–403.
30. Lindelöw B, Bergh CH, Lamm C, et al. Graft coronary artery disease is strongly related to the aetiology of heart failure and cellular rejections. *Eur Heart J*. 1999;20:1326–34.
31. Ramzy D, Rao V, Brahm J, et al. Cardiac allograft vasculopathy: a review. *Can J Surg*. 2005;48:319–27.
32. António N, Prieto D, Providência L, et al. A diabetes mellitus prévia não agrava o prognóstico no primeiro ano após a transplantação cardíaca. *Rev Port Cardiol*. 2010;29:205–20.
33. Lim JY, Jung SH, Kim MS, et al. Cardiac allograft vasculopathy after heart transplantation: is it really ominous? *Clin Transplant*. 2017;31.
34. Jashari F, Ibrahimi P, Nicoll R, et al. Coronary and carotid atherosclerosis: similarities and differences. *Atherosclerosis*. 2013;227:193–200.
35. Prieto D, Correia P, Baptista M, et al. Outcome after heart transplantation from older donor age: expanding the donor pool. *Eur J Cardio-thoracic Surg*. 2015;47:672–8.
36. Julius BK, Attenhofer Jost CH, Sutsch G, et al. Incidence, progression and functional significance of cardiac allograft vasculopathy after heart transplantation. *Transplantation*. 2000;69:847–53.
37. Hsu R, Bin, Chu SH, et al. Low incidence of transplant coronary artery disease in Chinese heart recipients. *J Am Coll Cardiol*. 1999;33:1573–7.
38. Mintz GS, Nissen SE, Anderson WD, et al. American College of Cardiology clinical expert consensus document on standards for acquisition, measurement and reporting of intravascular ultrasound studies (IVUS). A report of the American College of Cardiology Task Force on Clinical Expert Consensus Documents. *J Am Coll Cardiol*. 2001;37:1478–92.
39. Aranda JM, Pauly DF, Kerensky RA, et al. Percutaneous coronary intervention versus medical therapy for coronary allograft vasculopathy. One center’s experience. *J Heart Lung Transplant*. 2002;21:860–6.
40. Colombo P, Bruschi G, Sacco A, et al. Percutaneous coronary interventions in cardiac allograft vasculopathy: a single-center experience. *Transplant Proc*. 2010;42:1286–90.