



CASE REPORT

Endocardial left ventricular pacing after accidental aortic wall perforation



Raluca Șoșdean^{a,*}, Bogdan Enache^a, Răzvan Ioan Macarie^b, Sorin Pescariu^a

^a Department of Cardiology, "Victor Babeș" University of Medicine and Pharmacy, Timișoara, Romania

^b Cardiology Clinic, Institute of Cardiovascular Medicine, Timișoara, Romania

Received 11 December 2014; accepted 16 November 2015

Available online 28 February 2016

KEYWORDS

Artificial cardiac pacemaker;
Complication;
Aortic arch;
Perforation;
Left ventricular endocardial pacing

Abstract Inadvertent endocardial placement of a pacing lead in the left ventricle through the aortic valve is a rare complication with an unknown incidence because of inadequate reporting. Reported cases are usually the result of lead insertion via the subclavian artery. A possible but very unusual situation is endocardial lead insertion in the left ventricle after aortic arch perforation. We report the case of a 72-year-old woman in whom a screw-in pacing lead accidentally perforated the aortic arch and continued its way through the ascending aorta, aortic valve and left ventricle, after insertion through the left subclavian vein. We describe how this complication was diagnosed, the predisposing factors, the risks it carries and the ways in which devastating consequences have so far been avoided, as the patient refused any surgical intervention including lead removal.

© 2016 Published by Elsevier España, S.L.U. on behalf of Sociedade Portuguesa de Cardiologia.

PALAVRAS-CHAVE

Pacemaker cardíaco artificial;
Complicação;
Arco aórtico;
Perfuração;
Pacing endocárdico do ventrículo esquerdo

Pacing endocárdico do ventrículo esquerdo, após perfuração acidental da parede aórtica

Resumo A colocação inadvertida de um eletrodo de *pacing* ao nível do endocárdio do ventrículo esquerdo, através da válvula aórtica, é uma complicação rara, com uma incidência desconhecida por ser incorretamente relatada. Os casos relatados são, geralmente, o resultado da inserção do eletrodo através da artéria subclávia. Uma situação possível, mas muito incomum, é a colocação do eletrodo ao nível do endocárdio do ventrículo esquerdo, após a perfuração do arco aórtico. Relatamos aqui o caso de uma doente com 72 anos, em que o eletrodo do tipo de fixação ativa perfurou acidentalmente o arco aórtico, continuando o seu trajeto através da aorta ascendente, da válvula aórtica e do ventrículo esquerdo, após inserção pela

* Corresponding author.

E-mail address: sosdean.raluca@umft.ro (R. Șoșdean).

veia subclávia esquerda. Descrevemos a maneira como esta complicação foi diagnosticada, os fatores predisponentes, os riscos associados a essa complicação e as formas possíveis de evitar algumas consequências devastadoras até hoje, considerando que a doente recusou qualquer intervenção cirúrgica, incluindo a extração do eletrodo.

© 2016 Publicado por Elsevier España, S.L.U. em nome da Sociedade Portuguesa de Cardiologia.

Introduction

Inadvertent placement of the pacing lead in the left ventricle (LV) through the aortic valve is a rare complication of artificial pacemaker implantation with an unknown incidence because of inadequate reporting. Reported cases are usually the result of inadvertent subclavian artery puncture.¹⁻⁵ Regarding insertion of the lead through the aorta after aortic wall perforation, to the best of our knowledge there are only two cases reported in the literature.^{6,7} In both of them the lead was removed, and there is no evidence in the literature about possible predisposing factors or the management of such cases when lead removal is unfeasible.

Case report

A 72-year-old woman, particularly short, obese and displaying kyphosis, with moderate aortic regurgitation, severe mitral regurgitation, and an ascending aortic aneurysm, underwent implantation of a single-chamber pacemaker for severely symptomatic complete atrioventricular block and atrial fibrillation. During the intervention, because the cephalic vein was inaccessible, the left subclavian vein was punctured (with evidence of venous blood) and a Biotronik Selox ST 60 screw-in pacing lead was placed in an endocavitary position using a 7 F introducer, with good pacing and sensing thresholds (0.5 V and 8.3 mV, respectively). The procedure, performed by an experienced operator, was uneventful.

After the intervention, two unusual findings were made: a right bundle branch block (RBBB) pattern of the paced rhythm (with electrical axis of -150° , precordial transition in V4, rS in DI, RsR' in V1-V2) (Figure 1A); and a posterior lead orientation on the lateral chest radiograph (Figure 1B). We suspected the lead to be in a branch of the coronary sinus. The uncertainty prompted further investigation. Transthoracic echocardiography (Figure 2A) followed by transesophageal examination revealed the pacing lead entering the LV through the aortic valve and inserted in the mid part of the lateral wall.

Thoracic computed tomography (CT) angiography highlighted the entire trajectory; it revealed the lead leaving the subclavian vein, penetrating the aortic wall between the brachiocephalic trunk and the emergence of the left common carotid artery, and continuing its way to the left ventricle through the ascending aorta and aortic valve (Figure 2B-D). The ascending aortic aneurysm (5.8 cm ×

5.7 cm), with calcified atherosclerotic plaques, was confirmed without signs of dissection or hematoma.

The patient showed no clinical manifestation of this complication and refused any surgical intervention, including lead removal. She remained on heart failure medication and oral anticoagulation. No clinical or echocardiographic worsening related to the lead's position occurred during 12 months of follow-up. Chronic sensing and pacing parameters remained within normal ranges.

Discussion

Inadvertent endocardial LV placement of a pacing lead by aortic perforation is both possible and easy to overlook if the electrocardiographic and radiologic signs are misinterpreted. The interventional cardiologist must be aware of the situation as further unprotected interventional lead manipulation or extraction could result in serious mechanical complications. An RBBB pattern of the paced rhythm may be encountered in both LV and right ventricular pacing. In order to assess the lead's position, Okmen et al. proposed electrocardiographic criteria (left axis deviation between -30° and -90° , precordial transition in V3, absence of S wave in DI and qR or RS pattern in V1) that proved to be highly sensitive and specific for true right ventricular pacing; not meeting these criteria, as in our case, strongly suggests a pacing site outside the right ventricle.⁸

Aortic perforation by a pacing lead can be a life-threatening event; it carries a high risk of systemic thromboembolism due to the LV endocardial lead position in the systemic circulation and, in this case, to atrial fibrillation,^{3,9} and mechanical complications (aortic wall trauma resulting in massive hemorrhage, or trauma to the lead, aortic valve or coronary arteries).^{1,3} In our patient, appropriate oral anticoagulation (INR between 2 and 3) prevented thromboembolic events, while calcification and stiffness of the aortic wall possibly prevented aortic laceration and internal bleeding at the time of perforation. The coronary arteries were spared as the lead entered the left ventricle directly without engaging the coronary ostia. No trauma to the aortic valve or worsening of regurgitation was detected by echocardiography but these possible negative effects remain to be further assessed.

In both previously published reports, inadvertent placement of the pacing lead in the left ventricle after perforation of the aortic arch was symptomatic (recurrent left laryngeal nerve irritation and lead thrombosis,⁶ and large hemothorax and myocardial infarction⁷). One of the patients had a

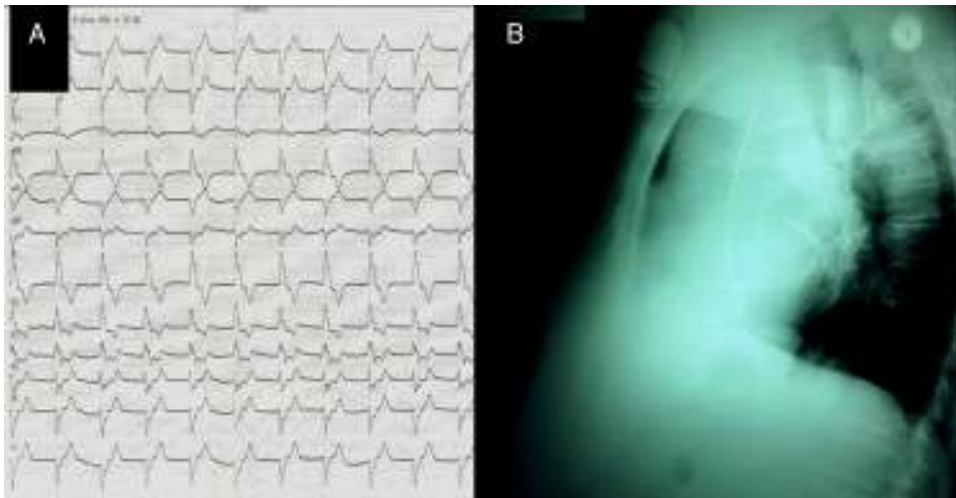


Figure 1 (A) Right bundle branch block pattern of the paced rhythm electrocardiogram; (B) lateral chest radiograph showing posterior orientation of the pacing lead.

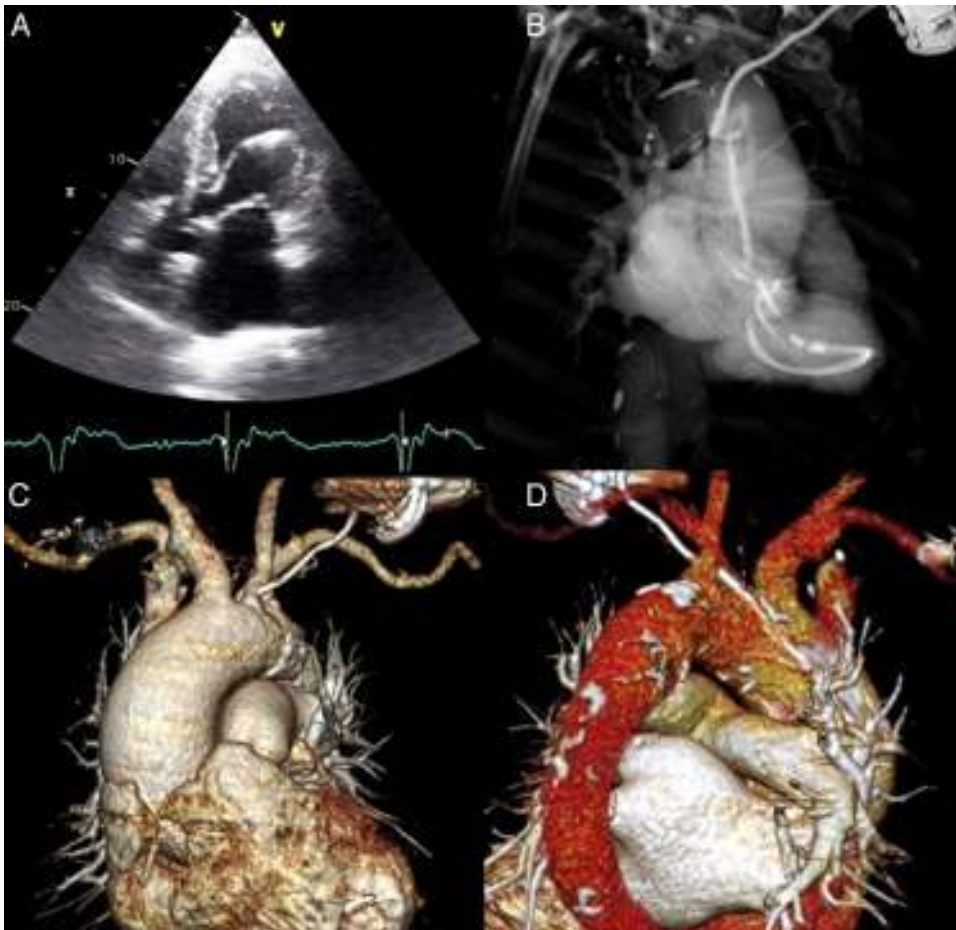


Figure 2 (A) Transthoracic echocardiography, apical 4-chamber view, showing the pacing lead passing through the aortic valve to insert in the left ventricular lateral wall; (B) thoracic computed tomography angiography (CTA), maximum intensity projection image, showing the entire trajectory of the pacing lead through the aneurysmal ascending aorta, aortic valve and left ventricle; (C) volume-rendered thoracic CTA showing pacing lead perforating the atheromatous aortic arch; (D) volume-rendered thoracic CTA showing perforation site between the left common carotid artery and the brachiocephalic trunk.

persistent left superior vena cava with an absent brachiocephalic vein that might have facilitated the complication.⁶ The leads were removed by conventional surgery through a median sternotomy with direct surgical closure of the aorta,⁶ and percutaneously by concomitant endovascular stent grafting of the aorta,⁷ respectively. In our patient the unusual position of normal anatomical structures facilitated this complication. Venous blood detected when puncturing, and the radiologic appearance of the aortic aneurysm, created the impression of a normal trajectory of the guide wire and lead (subclavian vein-superior vena cava-right heart), masking the complication during the intervention. At the time of the diagnosis, percutaneous removal was considered to carry a significant risk of mechanical complications. The recommended treatment for symptomatic malpositioned leads in the left ventricle consists of surgical removal,^{7,9} but as the patient was asymptomatic and refused any surgical intervention, we had no choice but to leave the lead in place. We chose lifelong oral anticoagulation because, besides the indication for the patient's atrial fibrillation, it has proved successful in asymptomatic patients with the lead inserted in the LV (usually through an atrial septal defect) and when lead removal was impossible.^{4,9}

Ethical disclosures

Protection of human and animal subjects. The authors declare that no experiments were performed on humans or animals for this study.

Confidentiality of data. The authors declare that they have followed the protocols of their work center on the publication of patient data.

Right to privacy and informed consent. The authors have obtained the written informed consent of the patients or subjects mentioned in the article. The corresponding author is in possession of this document.

Conflicts of interest

The authors have no conflicts of interest to declare.

Acknowledgments

This work was accomplished under the framework of the European Social Fund, Human Resources Development Operational Programme 2007–2013, project no. POSDRU/159/1.5/S/136893.

References

1. Issa ZF, Gill JB. Transarterial pacemaker lead implantation results in acute myocardial infarction. *Europace*. 2010;12:1654–5.
2. Issa ZF, Rumman SS, Mulin JC. Inadvertent transarterial insertion of atrial and ventricular defibrillator leads. *J Interv Card Electrophysiol*. 2009;24:63–6.
3. Reising S, Safford R, Castello R, et al. A stroke of bad luck: left ventricular pacemaker malposition. *J Am Soc Echocardiogr*. 2007;20, 1316.e1–1316.e3.
4. Paravolidakis KE, Hamodraka ES, Kolettis TM, et al. Management of inadvertent left ventricular permanent pacing. *J Interv Card Electrophysiol*. 2004;10:237–40.
5. Bracke F, Meijer A. Lead extraction via the femoral artery of a left ventricular pacing lead inserted in the subclavian artery. *Pacing Clin Electrophysiol*. 2003;26:1544–7.
6. Irvine JN, LaPar DJ, Mahapatra S, et al. Treatment of a malpositioned transcatheter ventricular pacing lead in the left ventricle via direct aortic puncture. *Europace*. 2011;13:1207.
7. Di Tommaso L, Iannelli G, Mottola M, et al. TEVAR for iatrogenic injury of the distal aortic arch after pacemaker implantation. *EJVES Extra*. 2013;26:e17–9.
8. Okmen E, Erdinler I, Oğuz E, et al. An electrocardiographic algorithm for determining the location of pacemaker electrode in patients with right bundle branch block configuration during permanent ventricular pacing. *Angiology*. 2006;57:623–30.
9. Van Gelder BM, Bracke FA, Oto A, et al. Diagnosis and management of inadvertently placed pacing and ICD leads in the left ventricle: a multicenter experience and review of the literature. *Pacing Clin Electrophysiol*. 2000;23:877–83.