



ORIGINAL ARTICLE

Left ventricular mechanical dyssynchrony in patients with impaired left ventricular function undergoing gated SPECT myocardial perfusion imaging

Maria João Vidigal Ferreira^{a,*}, Rodolfo Silva^b, Nuno Cabanelas^c,
Maria João Cunha^b, Domingos Ramos^c, Anabela Albuquerque^b, Rogério Teixeira^c,
Ana Paula Moreira^b, Gracinda Costa^b, João Lima^b, Luís Augusto Providência^c

^a Faculdade de Medicina, Universidade de Coimbra, Centro Hospitalar e Universitário de Coimbra (HUC), Serviço de Cardiologia, Coimbra, Portugal

^b Centro Hospitalar e Universitário de Coimbra (HUC), Serviço de Medicina Nuclear, Coimbra, Portugal

^c Centro Hospitalar e Universitário de Coimbra (HUC), Serviço de Cardiologia, Coimbra, Portugal

Received 17 June 2012; accepted 4 September 2012

KEYWORDS

Myocardial perfusion imaging;
Gated SPECT;
Dyssynchrony;
Coronary artery disease;
Heart failure

Abstract

Introduction: Gated SPECT myocardial perfusion imaging (MPI) has been used to quantify mechanical dyssynchrony. Mechanical dyssynchrony appears to be related to response to cardiac resynchronization therapy.

Objective: To evaluate the presence and predictors of mechanical dyssynchrony in patients with impaired left ventricular function (LVEF) $\leq 50\%$.

Methods: The study included 143 consecutive patients referred for gated SPECT MPI with LVEF $\leq 50\%$. Gated SPECT MPI was performed according to a stress/rest protocol acquiring images with Tc 99m-tetrofosmin. Emory Cardiac Toolbox software was used for phase analysis and a standard deviation (SD) $\geq 43^\circ$ was considered to indicate mechanical dyssynchrony.

Results: Mechanical dyssynchrony was present in 53.1% of the patients. Its predictors were diabetes (OR 2.0, $p \leq 0.05$), summed stress score (OR 1.1, $p \leq 0.0005$), summed rest score (OR 1.1, $p \leq 0.0001$), end-diastolic volume (OR 1.0, $p \leq 0.0001$), LVEF (OR 0.9, $p \leq 0.0001$), LVEF $\leq 35\%$ (OR 3.1, $p \leq 0.005$) and LVEF $\leq 35\%$ and QRS ≥ 120 ms (OR 3.5, $p \leq 0.05$). In this study QRS width and QRS ≥ 120 ms were not predictors of mechanical dyssynchrony.

Conclusions: Myocardial perfusion imaging can be used to assess mechanical dyssynchrony. In patients with impaired ventricular function mechanical dyssynchrony was highly prevalent and was related to parameters of left ventricular function and perfusion.

© 2012 Sociedade Portuguesa de Cardiologia Published by Elsevier España, S.L. All rights reserved.

* Corresponding author.

E-mail address: mjvidigal@netc.pt (M.J. Vidigal Ferreira).

PALAVRAS-CHAVE

Cintigrafia de perfusão miocárdica;
Gated SPECT;
 Dessincronia;
 Doença coronária;
 Insuficiência cardíaca

Dessincronia ventricular mecânica em pacientes com função ventricular esquerda diminuída referenciados para cintigrafia de perfusão miocárdica (*gated SPECT*)
Resumo

Introdução: A avaliação de dessincronia ventricular mecânica através da análise do histograma de fase na cintigrafia de perfusão miocárdica tem sido descrita na literatura. Segundo a evidência atual, a presença de dessincronia mecânica encontra-se relacionada com a resposta à terapêutica de ressincronização.

Objetivos: Avaliar a presença e os preditores de dessincronia ventricular mecânica em pacientes com fração de ejeção ventricular esquerda (FEVE) $\leq 50\%$.

Métodos: Foram incluídos pacientes que realizaram cintigrafia de perfusão miocárdica e cuja FEVE foi inferior ou igual a 50%. A amostra estudada incluiu 143 pacientes. As imagens de perfusão foram adquiridas de acordo com o protocolo esforço seguido de repouso com Tc-99m Tetrafosmina. A avaliação de dessincronia baseou-se na determinação do desvio padrão obtido através da análise do histograma de fase (*Emory Toolbox Software*). A presença de dessincronia foi considerada quando o desvio-padrão no histograma de fase foi superior ou igual a 43° .

Resultados: A presença de dessincronia foi observada 53,1% dos doentes. Foram preditores de dessincronia, a diabetes (OR 2,0, $p \leq 0,05$), o score de esforço (OR 1,1, $p \leq 0,0005$), o score de repouso (OR 1,1, $p \leq 0,0001$), o volume telediastólico (OR 1,0, $p \leq 0,0001$), a FEVE (OR 0,9, $p \leq 0,0001$), FEVE $\leq 35\%$ (OR 3,1, $p \leq 0,005$) e a presença em simultâneo de FEVE $\leq 35\%$ e QRS ≥ 120 ms (OR 3,5, $p \leq 0,05$). Nesta avaliação a duração do QRS ou a presença de QRS ≥ 120 ms não se relacionaram com a presença de dessincronia.

Conclusões: A cintigrafia de perfusão miocárdica pode ser usada na avaliação de dessincronia e esta tem uma elevada prevalência em pacientes com FEVE diminuída relacionando-se com parâmetros de função ventricular e perfusão miocárdica.

© 2012 Sociedade Portuguesa de Cardiologia. Publicado por Elsevier España, S.L. Todos os direitos reservados.

Introduction

Heart failure (HF) is highly prevalent and represents a considerable social and economic burden.

Cardiac resynchronization therapy (CRT) shows benefits in patients with end-stage HF, leading to improvements in left ventricular (LV) end-diastolic diameter and LV ejection fraction (LVEF) after 6 months of follow-up in randomized trials. CRT also has a beneficial impact on mortality, functional class and quality of life in all HF patients.¹⁻⁴

The current guidelines recommend CRT (class I, level of evidence A) in patients in NYHA class III or IV on optimal medical therapy, LVEF $\leq 35\%$ and QRS duration ≥ 120 ms.⁵

In spite of the evidence in favor of CRT, 20–40% of HF patients do not respond to the procedure. It has been suggested that one reason could be the criterion used to define dyssynchrony, the QRS width, which is not necessarily related to mechanical dyssynchrony.^{6,7} Observational studies have shown that the presence of left ventricular mechanical dyssynchrony is associated with a favorable response to CRT with LV reverse remodeling, decreased mitral regurgitation and consequent improvement in clinical outcome. By contrast, the absence of significant mechanical dyssynchrony appears to be associated with a high rate of non-response to CRT.⁸⁻¹¹

The use of phase analysis of gated single-photon emission computed tomography (SPECT) myocardial perfusion imaging (MPI) for the evaluation of mechanical dyssynchrony has been described in previous studies.¹²⁻¹⁵ Standard gated SPECT short-axis imaging enables detection of three-dimensional regional maximal counts for each time frame.

The variation in regional maximal counts is proportional to regional wall thickening through the cardiac cycle. Information on mechanical contraction of all regions (phase distribution) of the LV is obtained and displayed as either a histogram or a polar map. In a normal LV, regional contraction starts almost at the same time, resulting in a uniform polar map and a narrow and peaked phase histogram. The standard deviation of the left ventricular phases (phase SD) is a quantitative parameter that describes the dispersion of LV regional contraction and is used to assess mechanical dyssynchrony. Significant dyssynchrony is defined, according to previous studies, as a phase SD $\geq 43^\circ$.^{12,14-16}

The aim of this study was to assess the prevalence and predictors of mechanical dyssynchrony in patients with impaired ventricular function. As a secondary objective we set out to evaluate the predictors of mechanical dyssynchrony in patients with normal or mildly abnormal rest perfusion images.

Methods**Study population**

From February 1 to December 31 2011, consecutive patients referred for routine gated SPECT MPI in the Nuclear Medicine Department of Coimbra University Medical Center with estimated LVEF $\leq 50\%$ were retrospectively included. Patients with atrial fibrillation or in pacemaker rhythm were excluded.

SPECT myocardial perfusion imaging

Gated SPECT MPI data were acquired according to a stress (exercise or pharmacological)/rest protocol using Tc-99m tetrofosmin and a dual-head (Venti™) gamma camera. Perfusion defects were assessed visually and quantified using a 17-segment scoring system. The summed stress perfusion score (SSS), summed rest perfusion score (SRS) and summed difference score (SDS) were obtained. Patients were divided into two groups according to SRS and percentage of LV involvement: group 1 with <10% (normal or mildly abnormal images) and group 2 with ≥10% LV involvement (moderately to severely abnormal images). Gated SPECT MPI phase analysis was performed using the software in the Emory Cardiac Toolbox and an SD ≥43° was considered to indicate mechanical dyssynchrony.

Statistical analysis

A descriptive analysis was performed considering:

- Clinical variables: age, gender, diabetes, hypertension, known CAD (previous myocardial infarction (MI) or percutaneous or surgical revascularization);
- ECG variables: QRS width, QRS ≥120 ms, bundle branch block pattern (BBB);
- SPECT MPI variables: exercise vs. pharmacological stress with adenosine, presence of perfusion abnormalities, SSS, SRS, SDS, LVEF, end-diastolic volume (EDV) and SD on phase analysis. Patients were divided into those with SRS <10% and those with SRS ≥10% of LV involvement.

Continuous variables were presented as mean ± standard deviation and categorical variables were presented as proportions. Continuous variables were compared using ANOVA or the nonparametric Mann–Whitney test when appropriate.

Fisher's exact test was used for categorical data. Considering SD ≥43° as the dependent variable, univariate logistic regression analysis was used to assess predictors of mechanical dyssynchrony. Significant predictors were then incorporated into multivariate models. To assess the influence of rest perfusion abnormalities on mechanical dyssynchrony, the previous analysis was performed in the patient group with normal or mildly abnormal rest perfusion images (SRS <10% of LV involvement). The level of statistical significance was taken to be 0.05. All statistical analyses were performed using StatView version 5.0.1 for Macintosh and Windows, SAS Institute.

Results

The study included 143 patients, 22 women (15.4%) and 121 men (84.6%), with a mean age of 62.8±11.7 years. Clinical, electrocardiographic and SPECT MPI characteristics are shown in Table 1.

The prevalence of known CAD in this group was 41.3% and among these patients there was also a significant prevalence of hypertension and diabetes.

On baseline ECG a QRS width ≥120 ms was observed in 43.7% of the patients and a pattern of bundle branch block (BBB) in 16.1%.

Table 1 Clinical characteristics of the study population.

Clinical variables	n=143
<i>Male</i>	84.6%
<i>Age</i>	62.8±11.7
<i>Diabetes</i>	61 (42.7%)
<i>Hypertension</i>	88 (61.5%)
<i>Known CAD</i>	59 (41.3%)
<i>ECG variables</i>	
QRS width	116.2±32.6 ms
QRS ≥120 ms	62% (43.4)
BBB	23 (16.1%)
<i>Gated SPECT MPI variables</i>	
Exercise	20 (14.0%)
Abnormal perfusion	110 (76.9)
SSS	12.6±10.1
SRS	9.5±10.1
SDS	3.1±4.4
EDV	139.8±59.7
LVEF	38.8±8.7
LVEF ≤35%	43% (30.1)
SD	46.1±20.3
SD ≥43°	76% (53.1)
SRS <10% LV	71% (49.7)
QRS ≥120 ms and LVEF ≤35%	22% (15.4)

BBB: bundle branch block; CAD: coronary artery disease; EDV: end-diastolic volume; LVEF: left ventricular ejection fraction; SD: standard deviation; SDS: summed difference; SRS: summed rest score; SSS: summed stress score.

Almost all the exams were performed using pharmacological vasodilatation with adenosine (86%). A high number of abnormal perfusion images were seen (76.9%) and the prevalence of mechanical dyssynchrony was also high (53.1%). Figure 1 shows an example of a perfusion study with extensive defects and the related dyssynchrony analysis revealing mechanical dyssynchrony.

In Table 2 clinical, electrocardiographic and gated SPECT MPI characteristics are compared in patients with and without mechanical dyssynchrony according to SD.

The main differences between patients with and without mechanical dyssynchrony were the presence of diabetes and gated SPECT MPI variables. Patients with mechanical dyssynchrony had a higher prevalence of abnormal perfusion exams, with larger fixed defects, higher EDV and worse LVEF. In spite of the differences observed in the prevalence of QRS ≥120 ms, this was not statistically significant. Twenty-two patients had LVEF ≤35% and QRS ≥120 ms, and 17 of these patients had mechanical dyssynchrony.

Using logistic regression analysis, the univariate predictors of mechanical dyssynchrony were diabetes, the presence of abnormal perfusion, the extent of stress/rest perfusion defects, EDV and LVEF dysfunction. The presence of LVEF ≤35% and QRS ≥120 ms was also a predictor of mechanical dyssynchrony (Table 3).

Two multivariate models were built to identify variables that add incremental value over LVEF and QRS width, functioning as independent predictors of dyssynchrony.

In the clinical model (Table 4), diabetes was an independent predictor of mechanical dyssynchrony. The model

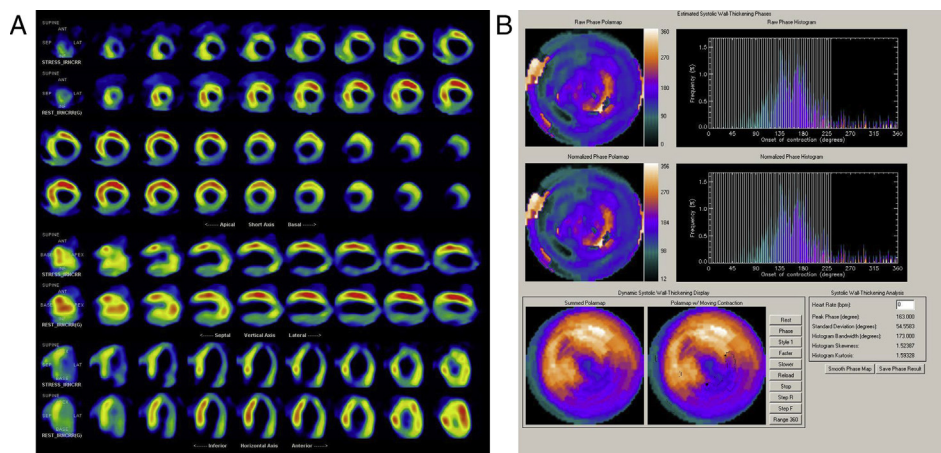


Figure 1 Gated SPECT myocardial perfusion images (A) of a patient with an extensive fixed perfusion defect (fibrosis) and corresponding dyssynchrony analysis showing the polar map and phase histogram with a wide base and SD of 54.6° (B).

incorporating MPI variables (SRS and EDV) added predictive value to the clinical one and in this model SRS and EDV were independent predictors of dyssynchrony (Table 5).

According to these results, perfusion abnormalities, particularly those present at rest, were strong predictors of mechanical dyssynchrony. To assess how the extent of SRS affects mechanical dyssynchrony, the same analysis was performed in the patient group with normal or mildly abnormal rest images, excluding those with SRS corresponding to LV involvement $\geq 10\%$.

In these patients QRS width, and in particular QRS ≥ 120 ms, were significantly more prevalent in patients with SD $\geq 43^\circ$, and as expected QRS ≥ 120 ms was the only predictor of mechanical dyssynchrony in this group (Tables 6 and 7).

Discussion

This is a study of consecutive patients referred for gated SPECT MPI with impaired LVEF ($\leq 50\%$). Our aim was to evaluate not only the prevalence of mechanical dyssynchrony in these patients but also its predictors among clinical, electrocardiographic and gated SPECT MPI variables. Mechanical dyssynchrony was defined, in accordance with previous studies, as a standard deviation, in phase analysis, of $\geq 43^\circ$.

The mean age of this group was 63 years, approximately 41% of the patients had a history of CAD (MI and/or myocardial revascularization) and there was also a significant prevalence of hypertension (62%) and diabetes (43%). Most of the patients thus had an intermediate to high risk of CAD.

Table 2 Differences between patients with and without mechanical dyssynchrony.

n=143	SD <43°67 (%)	SD ≥43°76 (%)	p
Male	57 (85.1)	64 (84.2)	NS
Age	62.9±12.0	62.7±11.5	NS
Diabetes	23 (34.3)	38 (50.0)	≤0.05
Hypertension	41 (61.2)	47 (61.8)	NS
Known CAD	22 (32.8)	37 (48.7)	NS (0.06)
QRS width	111.9±33.1	120.1±31.9	NS
QRS ≥120 ms	24 (35.8)	38 (50.0)	NS
BBB	8 (11.9)	15 (19.7)	NS
Exercise	11 (16.4)	9 (11.8)	NS
Abnormal perfusion	46 (68.7)	64 (84.2)	≤0.05
SSS	9.4±8.2	15.5±10.7	≤0.0005
SRS	5.8±6.9	12.7±11.4	≤0.0001
SDS	2.8±4.3	3.5±4.5	NS
EDV	118.2±48.3	158.6±62.6	≤0.0001
LVEF ≤35%	12 (17.9)	31(40.8)	≤0.005
LVEF	41.5±6.7	36.4±9.3	≤0.0005
LVEF ≤35% and QRS ≥120 ms	5 (7.5)	17 (22.4)	≤0.05

BBB: bundle branch block; CAD: coronary artery disease; EDV: end-diastolic volume; LVEF: left ventricular ejection fraction; SD: standard deviation; SDS: summed difference; SRS: summed rest score; SSS: summed stress score.

Table 3 Univariate predictors of mechanical dyssynchrony.

Variables	OR	CI	p
Diabetes	2.0	1.0–3.9	≤0.05
Abnormal perfusion	2.4	1.1–5.4	≤0.05
SSS	1.1	1.0–1.1	≤0.0005
SRS	1.1	1.0–1.1	≤0.0001
EDV	1.0	1.0–1.0	≤0.0001
LVEF	0.9	0.9–1.0	≤0.001
LVEF ≤35%	3.1	1.4–6.7	≤0.005
LVEF ≤35% and QRS ≥120 ms	3.5	1.3–10.1	≤0.05

CI: confidence interval; EDV: end-diastolic volume; LVEF: left ventricular ejection fraction; OR: odds ratio; SRS: summed rest score; SSS: summed stress score.

Table 4 Clinical model.

Variables	OR	CI	p
LVEF ≤35% and QRS ≥120 ms	4.1	1.4–12.2	≤0.01
Diabetes	2.2	1.0–4.4	≤0.05

Chi-square =11.6; p≤0.005 (likelihood ratio). CI: confidence interval; LVEF: left ventricular ejection fraction; OR: odds ratio.

Table 5 Clinical and MPI model.

Variables	OR	CI	p
LVEF ≤35% and QRS ≥120 ms	2.6	0.8–8.6	NS
Diabetes	2.0	0.9–4.3	NS
SRS	1.1	1.0–1.1	≤0.05
EDV	1.0	1.0–1.0	≤0.01

Chi-square =28.5; p≤0.0001 (likelihood ratio). CI: confidence interval; EDV: end-diastolic volume; LVEF: left ventricular ejection fraction; OR: odds ratio; SRS: summed rest score.

Table 6 Differences between patients with and without mechanical dyssynchrony in patients with normal or mildly abnormal SRS.

n=71	SD <43°n=40 (%)	SD ≥43°n=31 (%)	p
Male	33 (82.5)	24 (77.4)	NS
Age	61.1±12.0	61.5±11.7	NS
Diabetes	13 (32.5)	16 (51.6)	NS
Hypertension	27 (67.5)	21 (67.7)	NS
Known CAD	8 (20.0)	11 (35.5)	NS
QRS width	107.9±29.9	123.3±34.8	≤0.01
QRS ≥120 ms	10 (25)	16 (51.6)	≤0.05
Abnormal perfusion	20 (50.0)	19 (61.3)	NS
SSS	4.1±5.0	5.9±5.9	NS
SRS	1.2±1.8	1.7±1.9	NS
SDS	3.0±3.8	4.2±5.3	NS
EDV	114.5±49.7	137.4±50.7	NS (0.06)
LVEF ≤35%	6 (15.0)	8 (25.8)	NS
LVEF	42.2±6.5	40.5±8.4	NS
LVEF ≤35% and QRS ≥120 ms	1 (2.5)	4 (12.9)	NS

CAD: coronary artery disease; EDV: end-diastolic volume; LVEF: left ventricular ejection fraction; SD: standard deviation; SDS: summed difference; SRS: summed rest score; SSS: summed stress score.

Table 7 Univariate predictors of mechanical dyssynchrony.

Variables	OR	CI	p
QRS width	1.0	1.0–1.0	NS (0.06)
QRS ≥120 ms	3.1	1.1–8.5	≤0.05

CI: confidence interval; OR: odds ratio.

In view of these findings, the high frequency of perfusion abnormalities found on gated SPECT MPI (77%) was not surprising. LVEF was ≤35% in 30.1% of the studied patients.

The precise prevalence of mechanical dyssynchrony in patients with impaired LVEF is still debated; although phase SD is a continuous variable it is used to dichotomize populations into normal vs. dyssynchronous using a cut-off value derived from data from a single center, with the inherent limitations. Even so, we used this value (43°) in our study, and a prevalence of 53% was found for mechanical dyssynchrony based on gated SPECT.^{17,18}

The main differences between patients with and without mechanical dyssynchrony were the presence of diabetes and of an abnormal perfusion pattern (both higher in patients with mechanical dyssynchrony), LVEF (lower in patients with dyssynchrony), perfusion scores (with higher stress and rest scores and lower difference score in dyssynchrony patients) and EDV (higher in patients with mechanical dyssynchrony).

A wide QRS (≥120 ms) was more prevalent (although without statistical significance) in the dyssynchrony group (50%), but it should also be noted that among these patients, 50% had a narrow QRS. QRS duration was slightly greater in patients with dyssynchrony, but again without statistical significance. Several published studies have also found mechanical dyssynchrony in a considerable number of patients with a narrow QRS. The presence of ischemia and MI could be related to these findings.¹⁹ Whether these patients (with mechanical and without electrical dyssynchrony) benefit from CRT is still a matter of debate.^{20,21} Beshai et al.

found no significant improvements with CRT in patients with narrow QRS.^{22,23}

According to our results, there is a significant difference in LVEF (lower in patients with dyssynchrony) between the established groups. Dyssynchrony was identified in 72.1% of patients with LVEF $\leq 35\%$ but also in 45.0% of those with LVEF between 35 and 50%. Similar findings have been described in previous studies.²⁴ Atchey et al. found that 37% of patients with mild to moderate LVEF (35–50%) had significant degrees of mechanical dyssynchrony.²⁵

The number of patients with LVEF and QRS criteria for CRT was also higher in the dyssynchrony group. Five of these patients (22.7%) did not demonstrate mechanical dyssynchrony. This result raises the issue of electrical without mechanical dyssynchrony; the existing evidence emphasizes the role of imaging techniques in the identification of the latter, and in the selection of patients who may benefit from CRT. It appears that CRT can correct mechanical dyssynchrony caused by electrical dyssynchrony.^{26–29}

In univariate and multivariate logistic regression analysis, we found that in these patients the predictors of dyssynchrony were the presence of diabetes, the presence and extent of perfusion defects, especially rest score, EDV and LVEF. The simultaneous presence of wide QRS and low LVEF was also a predictor of mechanical dyssynchrony.

Diabetes is a powerful predictor of ischemic heart disease, so it was expected to find this relationship with mechanical dyssynchrony.^{30,31}

Low LVEF and increased EDV are predictors of dyssynchrony. Low EF and an enlarged LV are accompanied by geometrical and morphological modifications and by conduction disturbances and changes in contraction patterns. These changes can potentially be reversed by CRT.^{32–34}

We also found that the extent of perfusion defects, particularly of rest perfusion abnormalities, was also associated with increased dyssynchrony. This is not surprising considering that ischemic and infarcted segments exhibit significant degrees of motility changes (hypokinesia, akinesia or dyskinesia), resulting in abnormal contraction and dyssynchrony.³⁵

Considering the presence of CRT criteria (QRS ≥ 120 ms and LVEF $\leq 35\%$), two models were built to identify independent predictors of mechanical dyssynchrony and the incremental values of adding these predictors to the conventional CRT criteria. In the model incorporating clinical and gated SPECT MPI variables, SRS and EDV were independent predictors of dyssynchrony and the incremental value of adding them to the CRT criteria was well demonstrated.

A study by Samad et al. had similar results but their study population had LVEF $\leq 35\%$. In these they found that QRS width was also an important predictor of mechanical dyssynchrony.³⁶

In the study by Atchey et al. there was a weak correlation between QRS width and dyssynchrony in patients with LVEF between 35 and 50%.²⁵ In our study, only 30.1% of patients had LVEF $\leq 35\%$, which could partly explain the lack of predictive value of QRS width in our population. It should also be borne in mind that these patients had a very high prevalence of perfusion abnormalities and known CAD, both of which lead to mechanical dyssynchrony. For this reason we also evaluated patients with a rest perfusion score under 10% of LV involvement. In these patients there was a clear

relation between QRS width and the occurrence of mechanical dyssynchrony; in fact, QRS ≥ 120 ms was the only predictor of dyssynchrony. Rest perfusion abnormalities are associated with scar tissue, mechanical dyssynchrony and poor CRT response.^{37–40}

Mechanical dyssynchrony has been evaluated by several methods in several contexts, and appears to be common not only in patients with impaired LVEF and wide QRS.¹⁸ According to the literature, mechanical dyssynchrony has additional value over QRS duration in predicting cardiac events in heart failure patients.⁴¹

Limitations

This was an observational single-center cohort study with the limitations inherent to this kind of analysis. As symptoms of heart failure and functional class were not assessed, dyssynchrony could not be related to them, and this is an important constraint on further conclusions.

Conclusions

- Far from questioning previous results and recommendations, this study corroborates the idea that mechanical dyssynchrony, according to established criteria, is highly prevalent in a population with impaired ventricular function and with a high prevalence of perfusion abnormalities.
- Mechanical dyssynchrony is very common in patients with normal QRS width and mildly abnormal LVEF.
- It was also found that clinical and MPI variables add value to the CRT criteria for predicting mechanical dyssynchrony.
- In patients with normal or mildly abnormal rest images, QRS width was the only predictor of mechanical dyssynchrony.
- In this context, gated SPECT myocardial perfusion imaging, which provides information on ischemia, fibrosis, ventricular function and dyssynchrony, is a valuable aid to therapeutic decision-making, including the use of cardiac resynchronization therapy.

Ethical disclosures

Protection of human and animal subjects. The authors declare that no experiments were performed on humans or animals for this study.

Confidentiality of data. The authors declare that they have followed the protocols of their work center on the publication of patient data and that all the patients included in the study received sufficient information and gave their written informed consent to participate in the study.

Right to privacy and informed consent. The authors declare that no patient data appear in this article.

Conflicts of interest

The authors have no conflicts of interest to declare.

References

- Linde C, Leclercq C, Rex S, et al. Long-term benefits of biven- tricular pacing in congestive heart failure: results from the MULTISite STimulation in cardiomyopathy (MUSTIC) study. *J Am Coll Cardiol.* 2002;40:111–8.
- Cleland JG, Daubert JC, Erdmann E, et al. The effect of cardiac resynchronization on morbidity and mortality in heart failure. *N Engl J Med.* 2005;352:1539–49.
- Cleland JG, Daubert JC, Erdmann E, et al. Longer-term effects of cardiac resynchronization therapy on mortality in heart failure [the CARDiac REsynchronization-Heart Failure (CARE-HF) trial extension phase]. *Eur Heart J.* 2006;27:1928–32.
- Lindenfeld J, Feldman AM, Saxon L, et al. Effects of cardiac resynchronization therapy with or without a defibrillator on survival and hospitalizations in patients with New York Heart Association class IV heart failure. *Circulation.* 2007;115: 204–12.
- Dickstein K, Vardas PE, Auricchio A, et al. 2010 Focused Update of ESC Guidelines on device therapy in heart failure: an update of the 2008 ESC Guidelines for the diagnosis and treatment of acute and chronic heart failure and the 2007 ESC guidelines for cardiac and resynchronization therapy. Developed with the special contribution of the Heart Failure Association and the European Heart Rhythm Association. *Eur Heart J.* 2010;31:2677–87.
- Bax JJ, Abraham T, Barold SS, et al. Cardiac resynchronization therapy: Part 1 – issues before device implantation. *J Am Coll Cardiol.* 2005;46:2153–67.
- Bank AJ, Kelly AS, Burns KV, et al. Cardiac resynchronization therapy: role of patient selection. *Curr Cardiol Rep.* 2006;8:336–42.
- Breithardt OA, Stellbrink C, Kramer AP, et al. Echocardiographic quantification of left ventricular asynchrony predicts an acute hemodynamic benefit of cardiac resynchronization therapy. *J Am Coll Cardiol.* 2002;40:536–45.
- Sogaard P, Egeblad H, Kim WY, et al. Tissue Doppler imaging predicts improved systolic performance and reversed left ventricular remodeling during long-term cardiac resynchronization therapy. *J Am Coll Cardiol.* 2002;40:723–30.
- Anderson LJ, Miyazaki C, Sutherland GR, et al. Patient selection and echocardiographic assessment of dyssynchrony in cardiac resynchronization therapy. *Circulation.* 2008;117:2009–23.
- Soliman OI, Geleijnse ML, Theuns DA, et al. Usefulness of left ventricular systolic dyssynchrony by real-time three-dimensional echocardiography to predict long-term response to cardiac resynchronization therapy. *Am J Cardiol.* 2009;103:1586–91.
- Chen J, Garcia EV, Folks RD, et al. Onset of left ventricular mechanical contraction as determined by phase analysis of ECG-gated myocardial perfusion SPECT imaging: development of a diagnostic tool for assessment of cardiac mechanical dyssynchrony. *J Nucl Cardiol.* 2005;12:687–95.
- Chen J, Garcia EV, Lerakis S, et al. Left ventricular mechanical dyssynchrony as assessed by phase analysis of ECG-gated SPECT myocardial perfusion imaging. *Echocardiography.* 2008;25:1186–94.
- Trimble MA, Borges-Neto S, Smallheiser S, et al. Evaluation of left ventricular mechanical dyssynchrony as determined by phase analysis of ECG-gated SPECT myocardial perfusion imaging in patients with left ventricular dysfunction and conduction disturbances. *J Nucl Cardiol.* 2007;14:298–307.
- Trimble MA, Borges-Neto S, Velazquez EJ, et al. Emerging role of myocardial perfusion imaging to evaluate patients for cardiac resynchronization therapy. *Am J Cardiol.* 2008;102:211–7.
- Chen J, Henneman MM, Trimble MA, et al. Assessment of left ventricular mechanical dyssynchrony by phase analysis of ECG-gated SPECT myocardial perfusion imaging. *J Nucl Cardiol.* 2008;15:127–36.
- Henneman MM, Chen J, Dibbets-Schneider P, et al. Can LV dyssynchrony as assessed with phase analysis on gated myocardial perfusion SPECT predict response to CRT? *J Nucl Med.* 2007;48:1104–11.
- Kass DA. An epidemic of dyssynchrony: but what does it mean? *J Am Coll Cardiol.* 2008;51:12–7.
- Tournoux F, Donal E, Leclercq C, et al. Concordance between mechanical and electrical dyssynchrony in heart failure patients: a function of the underlying cardiomyopathy? *J Cardiovasc Electrophysiol.* 2007;18:1022–7.
- Yu CM, Lin H, Zhang Q, et al. High prevalence of left ventricular systolic and diastolic asynchrony in patients with congestive heart failure and normal QRS duration. *Heart.* 2003;89:54–60.
- van Bommel RJ, Tanaka H, Delgado V, et al. Association of intra-ventricular mechanical dyssynchrony with response to cardiac resynchronization therapy in heart failure patients with a narrow QRS complex. *Eur Heart J.* 2010;31:3054–62.
- Beshai JF, Grimm R. The resynchronization therapy in narrow QRS study (RethinQ study): methods and protocol design. *J Interv Card Electrophysiol.* 2007;19:149–55.
- Beshai JF, Grimm RA, Nagueh SF, et al. Cardiac-resynchronization therapy in heart failure with narrow QRS complexes. *N Engl J Med.* 2007;357:2461–71.
- Chan CP, Zhang Q, Yip GW, et al. Relation of left ventricular systolic dyssynchrony in patients with heart failure to left ventricular ejection fraction and to QRS duration. *Am J Cardiol.* 2008;102:602–5.
- Atchley AE, Trimble MA, Samad Z, et al. Use of phase analysis of gated SPECT perfusion imaging to quantify dyssynchrony in patients with mild-to-moderate left ventricular dysfunction. *J Nucl Cardiol.* 2009;16:888–94.
- Boriani G, Diemberger I, Biffi M, et al. Cardiac resynchronization therapy in clinical practice: need for electrical, mechanical, clinical and logistic synchronization. *J Interv Card Electrophysiol.* 2006;17:215–24.
- Beshai JF, Khunnawat C, Lin AC. Mechanical dyssynchrony from the perspective of a cardiac electrophysiologist. *Curr Opin Cardiol.* 2008;23:447–51.
- Bilchick KC, Lardo AC. Cardiac resynchronization therapy: application of imaging to optimize patient selection and assess response. *Curr Heart Fail Rep.* 2008;5:119–27.
- Gianfranchi L. Systolic heart failure: should we care about electrical, mechanical or electromechanical dyssynchrony? *Future Cardiol.* 2010;6:151–3.
- De Sutter J, De Bondt P, Van de Wiele C, et al. Prevalence of potential candidates for biventricular pacing among patients with known coronary artery disease: a prospective registry from a single center. *Pacing Clin Electrophysiol.* 2000;23 Pt 2:1718–21.
- Aljaroudi W, Aggarwal H, Venkataraman R, et al. Impact of left ventricular dyssynchrony by phase analysis on cardiovascular outcomes in patients with end-stage renal disease. *J Nucl Cardiol.* 2010;17:1058–64.
- Zhang Q, Fung JW, Auricchio A, et al. Differential change in left ventricular mass and regional wall thickness after cardiac resynchronization therapy for heart failure. *Eur Heart J.* 2006;27:1423–30.
- Soliman OI, Geleijnse ML, Theuns DA, et al. Reverse of left ventricular volumetric and structural remodeling in heart failure patients treated with cardiac resynchronization therapy. *Am J Cardiol.* 2008;101:651–7.
- St John Sutton M, Ghio S, Plappert T, et al. Cardiac resynchronization induces major structural and functional reverse remodeling in patients with New York Heart Association class I/II heart failure. *Circulation.* 2009;120:1858–65.

35. Forrester JS, Wyatt HL, Da Luz PL, et al. Functional significance of regional ischemic contraction abnormalities. *Circulation*. 1976;54:64–70.
36. Samad Z, Atchley AE, Trimble MA, et al. Prevalence and predictors of mechanical dyssynchrony as defined by phase analysis in patients with left ventricular dysfunction undergoing gated SPECT myocardial perfusion imaging. *J Nucl Cardiol*. 2011;18:24–30.
37. Bleeker GB, Kaandorp TA, Lamb HJ, et al. Effect of posterolateral scar tissue on clinical and echocardiographic improvement after cardiac resynchronization therapy. *Circulation*. 2006;113:969–76.
38. Jansen AH, Bracke F, van Dantzig JM, et al. The influence of myocardial scar and dyssynchrony on reverse remodeling in cardiac resynchronization therapy. *Eur J Echocardiogr*. 2008;9:483–8.
39. Adelstein EC, Tanaka H, Soman P, et al. Impact of scar burden by single-photon emission computed tomography myocardial perfusion imaging on patient outcomes following cardiac resynchronization therapy. *Eur Heart J*. 2011;32:93–103.
40. Xu YZ, Cha YM, Feng D, et al. Impact of myocardial scarring on outcomes of cardiac resynchronization therapy: extent or location? *J Nucl Med*. 2012;53:47–54.
41. Cho GY, Kim HK, Kim YJ, et al. Electrical and mechanical dyssynchrony for prediction of cardiac events in patients with systolic heart failure. *Heart*. 2011;96:1029–32.